

Www.Fcpsworld.com (Institute for Fcps & Md/Ms)

www.facebook.com/FcpsWorld

www.facebook.com/GynaeObsWorld

www.facebook.com/Ophtworld



For Complete List of Papers Visit our website <https://fcpsworld.com/fcps-pastpapers>



www.FCPSWORLD.com

GoldStandard Papers (FCPS-1)

Medicine & Allied

16 February 2022 (Evening)

Recent Past Papers

www.facebook.com/fcpsworld

- ✓ Clear FCPS-1 in **FIRST ATTEMPT**
- ✓ Entire course will be completed in 2 months.
- ✓ Live lectures via video Portal
- ✓ Daily Test session (Test discussion will be on Via Portal)
- ✓ Follow our complete guideline for FCPS-1
- ✓ Get Hands on 20,000 CPSP question (most of them repeat)
- ✓ Free study material, whatsapp group (only for our students)
- ✓ Don't Miss the chance. **(LIMITED SEATS AVAILABLE.)**
- ✓ WWW.FCPSWORLD.com
- ✓ WWW.facebook.com/fcpsworld
- ✓ For Details Phone# 03129684658



- ✓ Now you can join our Online classes for MD/MS & Fcps Preparation
- ✓ Complete course in 2months including Past paper discussion
- ✓ Join from anywhere using mobile/laptop using internet
- ✓ 100% feasible with job and 100% time adjustment for students
- ✓ www.fcpsworld.com or Contact 03129684658
- ✓ Hostel Facility is also available (for those who want to join physical classes)

Www.Fcpsworld.com (Institute for Fcps & Md/Ms)

www.facebook.com/FcpsWorld

www.facebook.com/GynaeObsWorld

www.facebook.com/Ophtworld



For Complete List of Papers Visit our website <https://fcpsworld.com/fcps-pastpapers>

(Errors and omissions excepted)

**FCPS-1 FEBRUARY 2022 Papers will Be uploaded on
Our website www.fcpsworld.com (keep visiting)**

Medicine & Allied 15 th February Evening
Medicine & Allied 15 th February Afternoon
Medicine & Allied 16 th February Afternoon
Medicine & Allied 16 th February Night
Surgery & Allied 16 th February Afternoon
Surgery & Allied 16 th February Night
Surgery & Allied 17 th February Morning
Radiology 15 th February Morning
Radiology 15 th February Evening
Anesthesia 15 th February Morning
OBG 16 th February Morning
OBG 16 th February Evening
OBG 16 th February Night
Opthmology February 2022
Pathology February 2022
Dentistry February 2022



- ✓ Now you can join our Online classes for MD/MS & Fcps Preparation
- ✓ Complete course in 2months including Past paper discussion
- ✓ Join from anywhere using mobile/laptop using internet
- ✓ 100% feasible with job and 100% time adjustment for students
- ✓ www.fcpsworld.com or Contact 03129684658
- ✓ Hostel Facility is also available (for those who want to join physical classes)



For Complete List of Papers Visit our website <https://fcpsworld.com/fcps-pastpapers>

Join Last Min Revision Live interactive session starting from 1st May 2022 and clear exam in 1st Attempt in just 1200rs

Register at www.fcpsworld.com/register

Medicine & Allied 16th Feb Evening www.fcpsworld.com

- Most common site of Atherosclerosis----->Abdominal Aorta
- wound contraction due to----->Myofibroblasts
- Join FcpsWorld Revision course & Clear exam in 1st Attempt
- Buy GoldStandard FCPS (Revise 11 years pastpapers in just 7 days. Subjectwise systemwise order 0312 9684658)
- death in pulmonary embolism due to----->Thromboembolism
- septic shock pressure suddenly drops to 65 mmHg. Dx----->Noradrenaline
- The CSF differs from plasma----->Low glucose and pH
- Reliability is----->Extent to which a procedure give repeated results
- scnerio of LVH with fluid over load. DOC----->Beta-blockers (frusamide was nt in option)
- intermediate tendon is attached to----->Hyoid bone
- Interstitial fluid calculation scnerio----->Jaundiced Patient presents with bilirubin 9,directbilirubin 0.9, Retics count 10, ALT 15,ALP 70 , Hb 5 and Coombs+ve. Cause ?----->Hemolytic anemia
- complains of Anosmia lesion in----->Hypothalamus
- tremors in voluntary movement & falls toward the Rt side. Lesion of----->Right cerebellar lesion
- Join FcpsWorld Revision course & Clear exam in 1st Attempt
- Buy GoldStandard FCPS (Revise 11 years pastpapers in just 7 days. Subjectwise systemwise order 0312 9684658)
- Nonidentical genes on same locus----->Allel
- right ventricular pressure is----->8 mmHg



- ✓ Now you can join our Online classes for MD/MS & Fcps Preparation
- ✓ Complete course in 2months including Past paper discussion
- ✓ Join from anywhere using mobile/laptop using internet
- ✓ 100% feasible with job and 100% time adjustment for students
- ✓ www.fcpsworld.com or Contact 03129684658
- ✓ Hostel Facility is also available (for those who want to join physical classes)



For Complete List of Papers Visit our website <https://fcpsworld.com/fcps-pastpapers>

- benzodiazepine antidot----->Flumazenil
- Join FcpsWorld Revision course & Cleear exam in 1st Attempt
- Buy GoldStandard FCPS (Revise 11 years pastpapers in just 7 days. Subjectwise systemwise order 0312 9684658)
- Sound of mitral valve is best heard at----->Left 5th Intercostal space in midclavicular line
- Pregnant woman taken only iron. She has low----->Folic acid
- Facial nerve is nerve----->Mixed
- Thermal diffusion capacity----->Bcmolmsr-14
- Muscle of Forced Expiration ----->ractus
- drug can be given to a patient with liver decompensation?----->Lorazepam
- anterior to third part of duodenum?----->SMA
- motheris also lactating. Most suitable NSAID ----->Ibuprofen
- Join FcpsWorld Revision course & Cleear exam in 1st Attempt
- Buy GoldStandard FCPS (Revise 11 years pastpapers in just 7 days. Subjectwise systemwise order 0312 9684658)
- Max serum concentration in adults is----->IgG
- Spiral groove got damaged of humerus. Nerve damaged----->Radial
- 5yrs of with fits and drowsiness. Neck stiff. Rx should be----->CSF examination
- Staph. Aureus. tx----->Cloxacillin
- MI changes in ecg----->Displacement of ST-segment
- sclera is blue and difficulty hearing. Dx----->Osteogenesis Imperfecta
- low AFP seen in----->down syndrome
- Pseudomembranouscolitis. tx----->Metronidazole
- IG in Myasthenia gravis----->IgG
- Join FcpsWorld Revision course & Cleear exam in 1st Attempt
- Buy GoldStandard FCPS (Revise 11 years pastpapers in just 7 days. Subjectwise systemwise order 0312 9684658)
- Postganglionic fibers to lacrimal gland----->Lacrimal nerve
- riboflavin niacin cause----->Pellagra



- ✓ Now you can join our Online classes for MD/MS & Fcps Preparation
- ✓ Complete course in 2months including Past paper discussion
- ✓ Join from anywhere using mobile/laptop using internet
- ✓ 100% feasible with job and 100% time adjustment for students
- ✓ www.fcpsworld.com or Contact 03129684658
- ✓ Hostel Facility is also available (for those who want to join physical classes)



For Complete List of Papers Visit our website <https://fcpsworld.com/fcps-pastpapers>

- demyelinating disease involves----->Schwann cells
- Taste nerve fibers take sensations to ----->Tractus Solitarius
- Internal Jugular vein is ----->Laterally to Carotid artery
- Join FcpsWorld Revision course & Cleear exam in 1st Attempt
- Buy GoldStandard FCPS (Revise 11 years pastpapers in just 7 days. Subjectwise systemwise order 0312 9684658)
- 65 yr old difficulty in swallowing. loss of wrinkles on her skin and difficulty In eating. Pecular marks on face----->CREST syndrome
- Drug of choice for acute Gout ?----->Cholchicine
- RTA with bp 60/40. dx----->Hypovolemic shock
- Join FcpsWorld Revision course & Cleear exam in 1st Attempt
- Buy GoldStandard FCPS (Revise 11 years pastpapers in just 7 days. Subjectwise systemwise order 0312 9684658)
- arises from lumbar region and pass through pelvis----->Psoas
- Wide QRS complex with Short PR interval in----->Wolf Parkinson White syndrome
- insulin cause----->Gluconeogenesis in liver
- Urinary incontinence is associated with----->Pudendal nerve
- Anomic Aphasia is due to l----->Parietal angular gyrus
- Uv light cause----->Cataract
- Example of primary cartilaginous jointis:----->Costochondral
- male with large breast.dx ----->Prolactinoma
- generalized purpura. Investigation----->Platelet count
- dry mouth and eye scenrio. Dx----->Sjogrens syndrome
- Join FcpsWorld Revision course & Cleear exam in 1st Attempt
- Buy GoldStandard FCPS (Revise 11 years pastpapers in just 7 days. Subjectwise systemwise order 0312 9684658)
- platelet count was 20k, hb was 6mg/dl. Neutro 30k. Dx----->DIC (sepsis cause DIC)
- Megaloblastic Anaemia diagnosis----->Aye In4
- Von Willebrand disease feature----->Inc. BT



- ✓ Now you can join our Online classes for MD/MS & Fcps Preparation
- ✓ Complete course in 2months including Past paper discussion
- ✓ Join from anywhere using mobile/laptop using internet
- ✓ 100% feasible with job and 100% time adjustment for students
- ✓ www.fcpsworld.com or Contact 03129684658
- ✓ Hostel Facility is also available (for those who want to join physical classes)



For Complete List of Papers Visit our website <https://fcpsworld.com/fcps-pastpapers>

- antibiotic for gram-positive----->Cefazolin
- Salivary enzyme ----->Amylase
- Barrier between maternal and fetal blood----->placenta
- Drug in Acute Coronary syndrom----->Atorvastatin
- increases absorption of iron in the gut?----->Citrus fruit
- Join FcpsWorld Revision course & Cleear exam in 1st Attempt
- Buy GoldStandard FCPS (Revise 11 years pastpapers in just 7 days. Subjectwise systemwise order 0312 9684658)
- Stratified columnar epithelium ----->Ducts of salivary gland
- fractured medial side of clavicle moving posteriorly Damage to----->Tracha
- low t4, tsh when TRH is administered to the patient. T4 rises. Area damaged----->Hypothalamus
- fluid in dehydration----->NS
- Join FcpsWorld Revision course & Cleear exam in 1st Attempt
- Buy GoldStandard FCPS (Revise 11 years pastpapers in just 7 days. Subjectwise systemwise order 0312 9684658)
- fractured neck of fibula artery damaged?----->Anteriortibial artery
- Increase PR interval is seen in----->First degree block
- featureof follicular carcinoma of thyroid----->Invade Capsule
- Septic shock cytokine----->TNF
- Most aggressive carcinoma----->Melanoma
- not DNA virus----->Mumps
- Bromocriptine-----> dopamin agonist
- retinoblastoma gene is responsible----->Rb1
- stimulus for the increased renin level is----->renal arteries stenosis
- Pain,Temp & Crude touch----->spinothelamic tract
- Inferior thyroid Artery ligation + complains of hoarsenessof voice. Damaged----->Recurrent Laryngeal Nerve
- Pendular reflexes knee jerk ----->Cerebellar disease



- ✓ Now you can join our Online classes for MD/MS & Fcps Preparation
- ✓ Complete course in 2months including Past paper discussion
- ✓ Join from anywhere using mobile/laptop using internet
- ✓ 100% feasible with job and 100% time adjustment for students
- ✓ www.fcpsworld.com or Contact 03129684658
- ✓ Hostel Facility is also available (for those who want to join physical classes)



For Complete List of Papers Visit our website <https://fcpsworld.com/fcps-pastpapers>

- Accommodation reflex is present but light reflex not. Lesion at----->Preteectum
- a wave is absent----->Mitral stenosis
- Tuft of hair and dimple in sacral segment in back. Dx----->Spina bifida occulta
- hormone remain Normal in pregnancy----->Growth Hormone
- Muscles of forceful inspiration----->Diaphragm
- Join FcpsWorld Revision course & Cleear exam in 1st Attempt
- Buy GoldStandard FCPS (Revise 11 years pastpapers in just 7 days. Subjectwise systemwise order 0312 9684658)
- accumulation of fluid in the abdomen due to----->Portal hypertension
- Labs show PT 12s, APTT 30. BT 2min----->Von willebrand disease
- 2nd heart sound is produced due to----->Closure of aortic and pulmonary valves
- The middle meningeal artery is branch of----->Maxillary artery
- Lung cancer cause----->Radon
- nocardia DOC----->Sulphonamides
- Critical tactile sensation is carried by:----->Dorsal white column
- Motor apraxia is due to lesion----->Parietal lobe
- motor aphasia----->Broca's area
- Join FcpsWorld Revision course & Cleear exam in 1st Attempt
- Buy GoldStandard FCPS (Revise 11 years pastpapers in just 7 days. Subjectwise systemwise order 0312 9684658)
- decrease in skeletal muscles during exercise----->Arteriolar resistance
- chronic bronchitis shows----->Hypertrophy and hyperplasia of mucus
- Drug that alters glycemic control and cause hyperglycemia:----->Hydrochlorothiazide
- blood group Antigens is----->Secreted in saliva
- low Maternal estriol seen in----->Down syndrome
- Drug in travellers' diarrhoea is ?----->Norfloxacin
- pH is 7.3 PCO₂ is 43 mmHg & HCO₃ 15 meq/L. dx----->Metabolic acidosis
- acts as second messenger----->Adenosine monophosphate



- ✓ Now you can join our Online classes for MD/MS & Fcps Preparation
- ✓ Complete course in 2 months including Past paper discussion
- ✓ Join from anywhere using mobile/laptop using internet
- ✓ 100% feasible with job and 100% time adjustment for students
- ✓ www.fcpsworld.com or Contact 03129684658
- ✓ Hostel Facility is also available (for those who want to join physical classes)



For Complete List of Papers Visit our website <https://fcpsworld.com/fcps-pastpapers>

- mitral regurgitation has----->Pansystolic murmur
- Increase lymphocytes seen in----->TB
- Sign of cerebellar dysfunction----->Dysarthria
- sympathetic stimulation cause----->Bronchodilation
- MCV=108fL, Hb=9. dx----->Vitamin B12 Deficiency
- Join FcpsWorld Revision course & Cleear exam in 1st Attempt
- Buy GoldStandard FCPS (Revise 11 years pastpapers in just 7 days. Subjectwise systemwise order 0312 9684658)
- Clinical feature of Thalassemia trait is----->Increase HbA2 and HbF in blood
- With thalassemia trait parents, what is the indication of prenatal diagnosis----->Parents are carriers of genetic defect
- A child with worsening pallor, hepatomegaly and Hb 5mg. The likely cause is?----->Thalassemia major
- A patient underwent surgery for mitral valve replacement. After 8-12 months of the surgery, she develops complains of pallor & dark colored urine. What is the likely cause----->Microangiopathic hemolytic anemia
- Receptors for cold----->C-fibers
- The Hb in Sickle cell anemia is----->HbS
- Join FcpsWorld Revision course & Cleear exam in 1st Attempt
- Buy GoldStandard FCPS (Revise 11 years pastpapers in just 7 days. Subjectwise systemwise order 0312 9684658)
- Corynebacterium diphtheria produces:----->Exotoxins
- Feature of acid fast bacilli in TB----->Cell wall made of peptidoglycan
- Schwann cells like cell in CNS----->Oligodendroglia
- Sensory neurons are----->Pseudo unipolar
- Which Encapsulated fibers lying deep in whole body can feel pressure and vibrations and feel pressure on face as well----->Pacinian corpuscles
- Therapeutic dose of a drug for a particular condition is determined by----->Potency



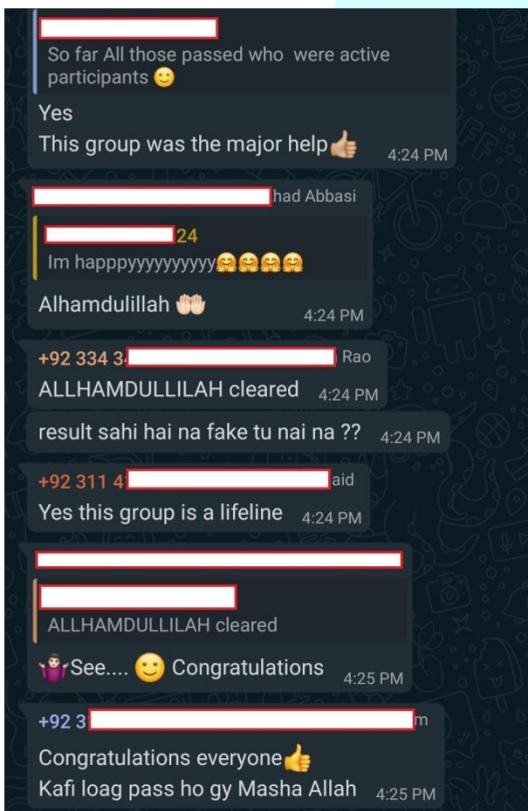
- ✓ Now you can join our Online classes for MD/MS & Fcps Preparation
- ✓ Complete course in 2months including Past paper discussion
- ✓ Join from anywhere using mobile/laptop using internet
- ✓ 100% feasible with job and 100% time adjustment for students
- ✓ www.fcpsworld.com or Contact 03129684658
- ✓ Hostel Facility is also available (for those who want to join physical classes)



For Complete List of Papers Visit our website <https://fcpsworld.com/fcps-pastpapers>

▪ **Almost every student who joins our Online Classes**
Passes exam (Alhamduillah)

- Join FCPSWORLD Online Classes and clear your 100% concepts. Our lectures presentations are extract of past papers and consist on FirstAid, BRS, snell anatomy, kaplan neuroanatomy etc.



- ✓ Now you can join our Online classes for MD/MS & Fcps Preparation
- ✓ Complete course in 2months including Past paper discussion
- ✓ Join from anywhere using mobile/laptop using internet
- ✓ 100% feasible with job and 100% time adjustment for students
- ✓ www.fcpsworld.com or Contact 03129684658
- ✓ Hostel Facility is also available (for those who want to join physical classes)

Www.Fcpsworld.com (Institute for Fcps & Md/Ms)

www.facebook.com/FcpsWorld

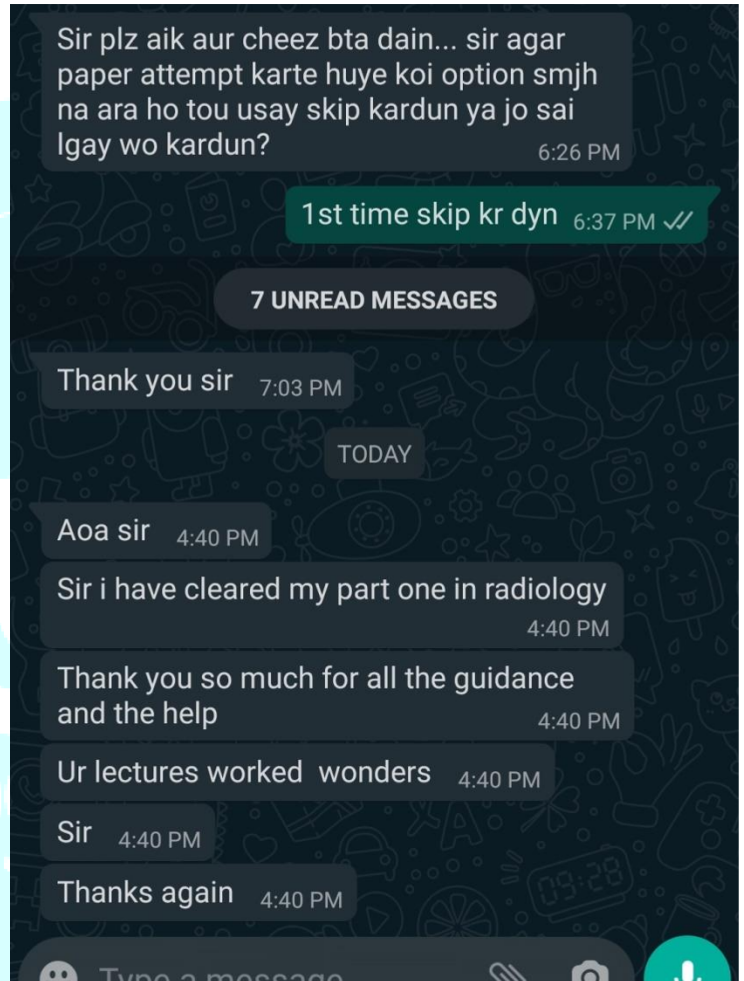
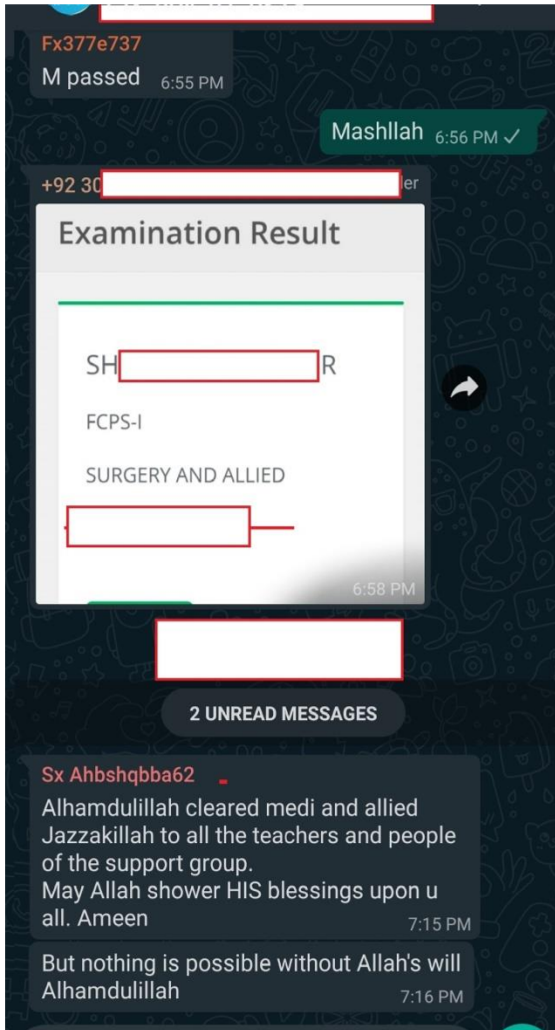
www.facebook.com/GynaeObsWorld

www.facebook.com/Ophtworld



For Complete List of Papers Visit our website <https://fcpsworld.com/fcps-pastpapers>

& Many More Success Stories



& Many More Success Stories



- ✓ Now you can join our Online classes for MD/MS & Fcps Preparation
- ✓ Complete course in 2months including Past paper discussion
- ✓ Join from anywhere using mobile/laptop using internet
- ✓ 100% feasible with job and 100% time adjustment for students
- ✓ www.fcpsworld.com or Contact 03129684658
- ✓ Hostel Facility is also available (for those who want to join physical classes)

Www.Fcpsworld.com (Institute for Fcps & Md/Ms)

www.facebook.com/FcpsWorld

www.facebook.com/GynaeObsWorld

www.facebook.com/Ophtworld



For Complete List of Papers Visit our website <https://fcpsworld.com/fcps-pastpapers>



FCPS-1 MAY 2022

REVISION COURSE

LAST DAYS EXCLUSIVE

REGISTER NOW!

February 2022 GoldenPoints

20* SEATS ONLY

PastPapers 2009-2022

HIGH YIELD CONCEPTS



Online Interactive Classes

FEE RS 1200 ONLY

WWW.FCPSWORLD.COM/REGISTER



CALL US NOW

+92 312 9684658



FcpsWorld
Online Classes



SURGERY & ALLIED | MEDICINE & ALLIED
| GYNAE OBS | ENT | PATHOLOGY | RADIOLOGY
| OPTH | ANESTHESIA | DENTISTRY | PSY |

Www.Fcpsworld.com (Institute for Fcps & Md/Ms)

www.facebook.com/FcpsWorld

www.facebook.com/GynaeObsWorld

www.facebook.com/Ophtworld



For Complete List of Papers Visit our website <https://fcpsworld.com/fcps-pastpapers>

FCPS-1 ONLINE COURSE

Join FcpsWorld Online preparation courses and clear exam in 1st Attempt.

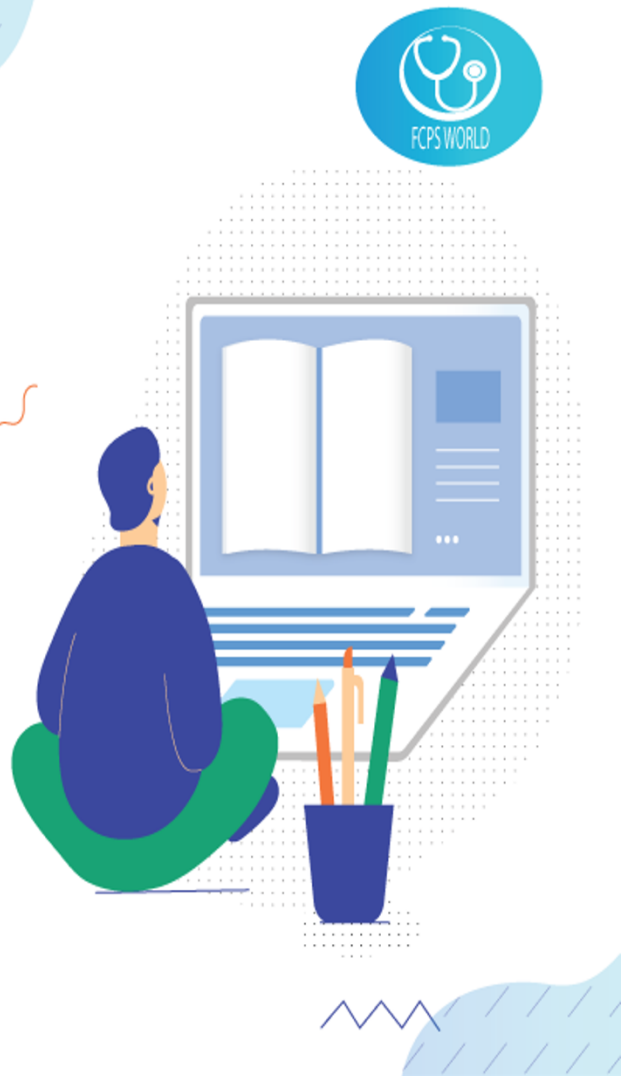
WWW.FCPSWORLD.COM



Fcpsworld



www.fcpsworld.com



- ✓ Now you can join our Online classes for MD/MS & Fcps Preparation
- ✓ Complete course in 2months including Past paper discussion
- ✓ Join from anywhere using mobile/laptop using internet
- ✓ 100% feasible with job and 100% time adjustment for students
- ✓ www.fcpsworld.com or Contact 03129684658
- ✓ Hostel Facility is also available (for those who want to join physical classes)

Www.Fcpsworld.com (Institute for Fcps & Md/Ms)

www.facebook.com/FcpsWorld

www.facebook.com/GynaeObsWorld

www.facebook.com/Ophworld



For Complete List of Papers Visit our website <https://fcpsworld.com/fcps-pastpapers>

GoldStandard
FCPS (Buy 4rd
edition only)

February 2022 papers
(recent updated)

Revise 11 years
pastpapers in just 11
days

Authentic most repeated
papers.

- ✓ Subject wise topic wise MCQS
- ✓ 1 liner for rapid revision. (Cram them)
- ✓ Clear FCPS-1 in 1st Attempt (Dont miss chance)
- ✓ Free Cash on Delivery Order at

www.fcpsworld.com/order-book



- ✓ Now you can join our Online classes for MD/MS & Fcps Preparation
- ✓ Complete course in 2months including Past paper discussion
- ✓ Join from anywhere using mobile/laptop using internet
- ✓ 100% feasible with job and 100% time adjustment for students
- ✓ www.fcpsworld.com or Contact 03129684658
- ✓ Hostel Facility is also available (for those who want to join physical classes)



For Complete List of Papers Visit our website <https://fcpsworld.com/fcps-pastpapers>

GoldStandard FCPS 4th Edition V1 (Golden 13)

Table of Content

1. CVS SYSTEM	Page#5
2. ENDOCRINE SYSTEM	Page#33
3. RENAL SYSTEM	Page#69
4. RESPIRATORY SYSTEM	Page#89
5. GIT SYSTEM	Page#113
6. Hematology	Page#145
7.	
8. ANATOMY	
a. UPPER LIMB	Page#169
b. LOWER LIMB	Page#200
c. THORAX	Page#225
d. NEUROANATOMY	Page#233
e. HEAD AND NECK	Page#270
f. ABDOMEN PELVIS	Page#281
g. Histology	Page#292
h. General Anatomy	Page#294
9. PHARMACOLOGY	Page#298
10. MICROBIOLOGY	
a. Bacteriology	Page#301
b. Virology	Page#309
c. Fungi	Page#3011

NOTE:

1. MCQs should be covered in retrograde fashion
2. All students who have ordered book will receive November papers in PDF as well via whatsapp (Do them first)
3. All written In **tabular** form or in **points** form are pastpapers
4. Each and every word from this book is from pastpapers (Except UPPER/LOWER LIMBS that has bit of explanation)
5. Students are highly advised to take Last Minute revision course starting in last 10 days of EXAMS (All points and systems will be covered 3 hr class daily)
Register: www.fcpsworld.com/register

If you have less time first do PDF files sent by us, then open each topic just CRAM TABULAR PASTPAPERS, then open each system and cram MISC 2019-2021 papers of all systems after completing those start MISC 2009-2021 of from system one.



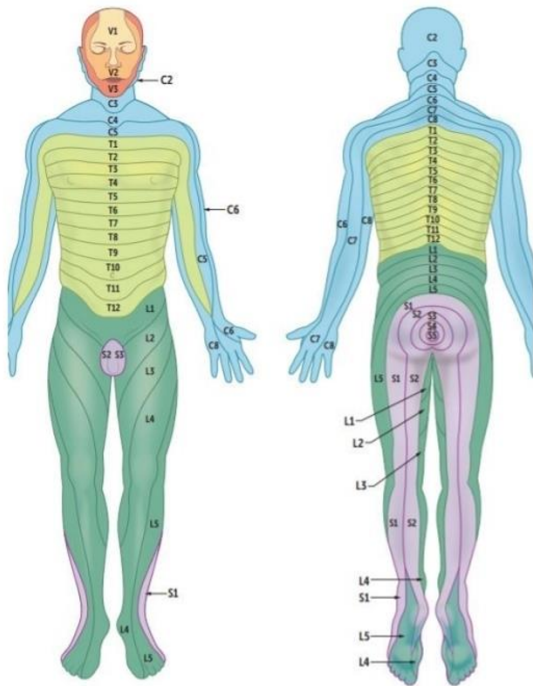


For Complete List of Papers Visit our website <https://fcpsworld.com/fcps-pastpapers>

GoldStandard FCPS 4th Edition V1 (Golden 13)

- Superficial fascia of the scalp is mixture of → Loose areolar and adipose tissue
- The axillary sheath is a continuation of → Prevertebral fascia
- Thyroid gland moves with swallowing because it is enclosed in → Pretracheal fascia
- Trauma to one kidney without the perforation of Gerota fascia, the blood goes to → Inferiorly to the pelvis
- True regarding the posterior triangle of neck is → Roof formed by investing layer of deep cervical fascia

DERMATOMES



C2	Posterior half of skull
C3	High turtleneck shirt Diaphragm and gallbladder pain referred to the right shoulder via phrenic nerve ✓ C3, 4, 5 keeps the diaphragm alive
C4	Low-collar shirt
C6	Includes thumbs ✓ Thumbs up sign on left hand looks like
T4	✓ At the nipple ✓ T4 at the teat pore
T7	✓ At the xiphoid process 7 letters in xiphoid
T10	✓ At the umbilicus (belly button) Point of referred pain in early appendicitis
L1	✓ At the Inguinal Ligament
L4	✓ Includes the kneecaps Down on ALL 4's
S2, S3, S4	✓ Sensation of penile and anal zones S2, 3, 4 keep the penis off the floor

GREAT TOE	L4
LITTLE TOE	S1
KNEE	L4
NIPPLE	T4
UMBILICUS	T10
RING AND LITTLE FINGER	C8 RING, T1 LITTLE
THUMB	C6

anal area dermatome	s3-4
dermatome of lateral wrist	c6
dermatomy of thumb	c6

Join FcpsWorld Online Classes and Clear exam in 1st Attempt

GoldStandard FCPS 4th Edition V1 (Golden 13)

knee dermatome	l4
lower end of clavicle dermatome	c3-4
pain in calf and medial malleolus dermatome	l4

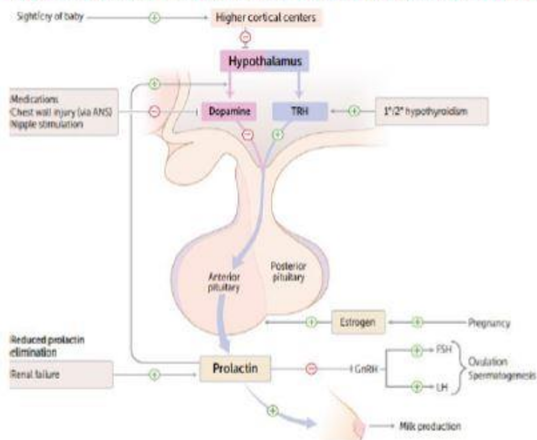




For Complete List of Papers Visit our website <https://fcpsworld.com/fcps-pastpapers>

Prolectin

1. Stimulates milk production in breast; inhibits ovulation in females and spermatogenesis in males by inhibiting **GnRH** synthesis and release (thus **LH, FSH release**).
 - Hypothalamus -> Decr GnRH secretion -> Decr FSH/LH -> Decr estradiol in females, Decr testosterone in males
 - Alveolar Cells of Breast Ducts -> Milk production and release -> Lactation
 - Prolectin release dopamine which inhibits prolectin
2. Release by sucking, voice of baby
3. Prolectin secretion from anterior pituitary is tonically inhibited by **dopamine** Prolectin.



GoldStandard FCPS 4th Edition V1 (Golden 13)

PAST PAPERS

Potent stimulus for prolactin release is?	Suckling reflex of baby
A 9-month pregnant presents with complaints of lactation (milky discharge). This is likely due to	Prolactin
Secretion of milk in mammary gland is due to	Prolactin
During lactation, ovulation is inhibited because of inhibition of GnRH by?	Prolactin
hormone of the anterior pituitary is under direct inhibitory control of hypothalamus?	Prolactin
During lactation, ovulation is inhibited because of inhibition of GnRH hv?	Prolactin



- ✓ Now you can join our Online classes for MD/MS & Fcps Preparation
- ✓ Complete course in 2months including Past paper discussion
- ✓ Join from anywhere using mobile/laptop using internet
- ✓ 100% feasible with job and 100% time adjustment for students
- ✓ www.fcpsworld.com or Contact 03129684658
- ✓ Hostel Facility is also available (for those who want to join physical classes)



For Complete List of Papers Visit our website <https://fcpsworld.com/fcps-pastpapers>

GoldStandard FCPS 4th Edition V1 (Golden 13)

ENDOCARDITIS

- Nonbacterial endocarditis is seen in → Neoplasms, hypercuaquable state
- Most common cause of death in rheumatic fever → Myocarditis
- Commonly use Tri-cuspaed valvue
- common in IV-drug users
- Libman-Sack Endocarditis occurs in → SLE
- DOC is benzethins pencilline if allergic give genta+vanco
- Correct infective endocarditis sequence
Damage valve, Thrombus, Bacteremia, Perforation (VT-BP)

Bacterial endocarditis Acute—*S aureus* (high virulence). Large vegetations on previously normal valves. Rapid onset.
Subacute—viridans streptococci (low virulence). Smaller vegetations on congenitally abnormal or diseased valves. Sequela of dental procedures. Gradual onset.

Tricuspid valve endocarditis is associated with IV drug use (don't "tri" drugs). Associated with *S aureus*, *Pseudomonas*, and *Candida*.
S bovis (gallolyticus) is present in colon cancer, *S epidermidis* on prosthetic valves.

PAST PAPERS

Non thrombotic bacterial endocarditis is frequently associated with?	Terminal neoplasm
A known case of rheumatic mitrai stenosis developed fever, lassitude body ache after tooth extraction. O/E splinter haemorrhages and splenomegaly was noted Subacute endocarditis is suspected. Most likely organism on blood culture would be?	Strep viridans
Most common heart valve affected in diseases is	Tricuspid
Female pt. has valvular heart disease, such pt. are at risk of developing infective endocarditis, which organism is commonly responsible	streptococcus viridians
On Examination there are skin spots and nail bed hemorrhages on both hands & a Grade-4 Diastolic Murmur, past history is unremarkable. Patient is most likely suffering from	Infective Endocarditis
Developed fever, lassitude body ache after tooth extraction. Most likely organism on blood culture would be	Strep viridians
Infective endocarditis Patient is allergic to penicillin give medication	Vancomycin + gentamicin
School teacher who after death was diagnosed as a case of endocarditis and lymphocytic infiltration of cardiac tissues	Coxsackie virus



- ✓ Now you can join our Online classes for MD/MS & Fcps Preparation
- ✓ Complete course in 2months including Past paper discussion
- ✓ Join from anywhere using mobile/laptop using internet
- ✓ 100% feasible with job and 100% time adjustment for students
- ✓ www.fcpsworld.com or Contact 03129684658
- ✓ Hostel Facility is also available (for those who want to join physical classes)



For Complete List of Papers Visit our website <https://fcpsworld.com/fcps-pastpapers>

GoldStandard FCPS 4th Edition V1 (Golden 13)

True about CSF	Slightly acidic than plasma
----------------	-----------------------------

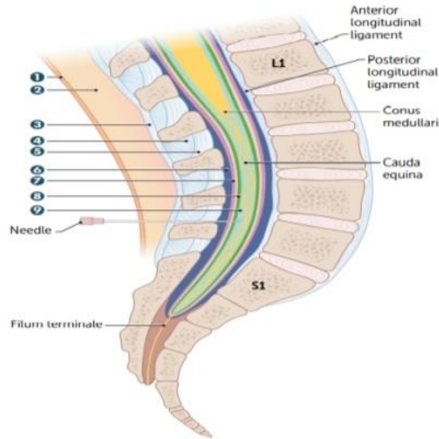
LUMBER PUNCTURE

In adults, spinal cord ends at lower border of L1–L2 vertebrae. Subarachnoid space (which contains the CSF) extends to lower border of S2 vertebra. Lumbar puncture is usually performed between L3–L4 or L4–L5 (level of cauda equina).

Goal of lumbar puncture is to obtain sample of CSF without damaging spinal cord. To **keep** the cord **alive**, keep the spinal needle between **L3** and **L5**.

Needle passes through:

- 1 skin
- 2 fascia and fat
- 3 supraspinous ligament
- 4 interspinous ligament
- 5 ligamentum flavum
- 6 epidural space (epidural anaesthesia needle stops here)
- 7 dura mater
- 8 arachnoid mater
- 9 subarachnoid space (CSF collection occurs here)



Past papers

During LP after crossing flavum at L3, L4 the needle touches which structure first	Epidural space
Ideal site for lumbar puncture is	Below L4
Regarding Epidural space extension	Foramen magnum to S2
Site of Epidural anaesthesia for patient undergoing Vaginal hysterectomy is	Sacral hiatus
Spinal cord is suspended in dura by	Denticulate ligament
Structure most likely pierced by needle during lumbar puncture is	Ligamentum flavum
Which of the following structure is pierced in paramedian approach	Ligamentum flavum
The most common site of spinal anaesthesia is?	Subarachnoid
Subarachnoid space ends at the level of	S2-S3
Cauda equina:	Anterior & posterior roots of spinal cord from L1 to L5

Note:

Herniation between L4-L5 affect which spinal segment?	Lumbar
Between L4 and L5 disc herniation, which spinal nerve will be affected	L5
Herniation between L4-L5 affect which spinal segment	L4

Centers of Brain

- Vomiting centre located in → Medulla
- Cough centre is present in → medulla
- Respiratory centre located in → Medulla oblongata

Past papers



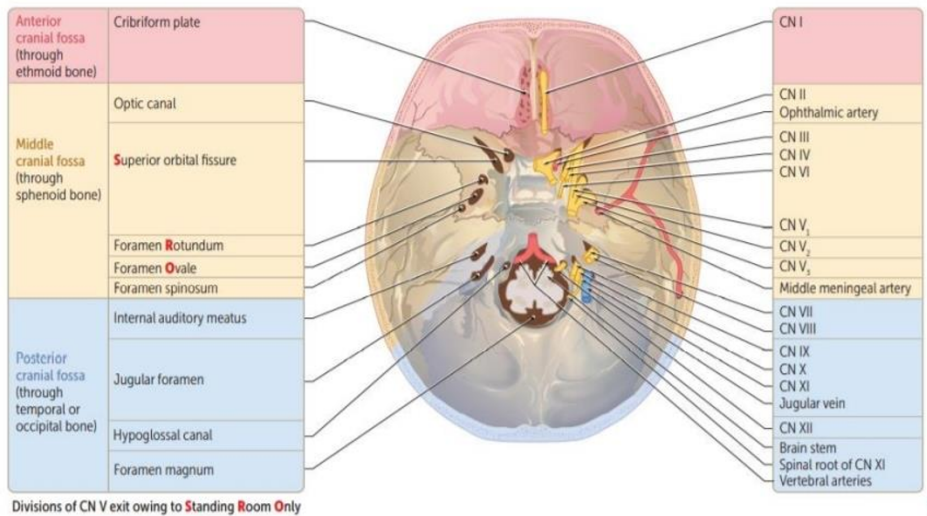


For Complete List of Papers Visit our website <https://fcpsworld.com/fcps-pastpapers>

GoldStandard FCPS 4th Edition V1 (Golden 13)

HEAD AND NECK

Foramin of Skull



Anterior cranial Fossa (ethmoid bone)	Cribriform plate	CN 1
Middle Cranial Fossa (sphenoid bone)	Optic Canal	CN2 Ophthalmic artery, central retinal vein
	Superior orbital fissure	CN2,4,6 CN 5-V1
	Foramen rotundum	CN5-V2 → maxillary branch of trigeminal nerve
	Foramen ovale	CN5-V3 → mandibular branch of trigeminal nerve
Posterior Cranial Fossa (temporal or occipital bone)	Foramen spinosum	Middle meningeal artery
	Internal auditory meatus	CN7, 8
	Jugular foramen	CN 9,10,11 Jugular vein
	Hypoglossal canal	CN12
	Foramen magnum	Brain stem Spinal root of CN 12 Vertebral arteries

Pastpapers

270/314



Accessory meningeal artery enters through which foremen----->Ovale
Accessory nerve passes through which foramen----->Jugular foramen
Foramen Rotundum damaged which structure will be severed----->Maxillary branch of trigeminal nerve.
Lesion below foramen Ovale causes paralysis of----->Lower part of face/Jaw
Mandibular branch of Trigeminal nerve passes through----->Foramen ovale
Middle meningeal artery in the----->Foramen Spinosum
Nerve in foramen Ovale damaged nerve supply of which part will be affected----->Lower face
Vagus nerve passes through----->jugular foramen





For Complete List of Papers Visit our website <https://fcpsworld.com/fcps-pastpapers>

FSH & LH

LH

Luteinizing Hormone in males acts on = Leydig cells

1. **Luteinizing** hormone acts on = **Leydig** cells to produce **Testosterone**
2. Function of LH before ovulation is=Convert most of the **granulosa** cells into **lutein** cells

Join FcpsWorld Online Classes and Clear exam in 1st Attempt

GoldStandard FCPS 4th Edition V1 (Golden 13)

FSH

3. **FSH** acts on =**Sertoli** cells to do **Spermatogenesis** → Related to **Azoospermia**

[**LighT** is **FaSt**]

- Development of seminiferous tubules
- Convert testosterone into estradiol
- Helps in maturation of follicles
- Inhibited by **INHIBIN**

Spermatogenesis is stimulated by	FSH and testosterone
LH act through:	cAMP
Hormone causing increase release of testosterone:	Luteinizing hormone
LH act on which testicular cells mostly	Leydig cells

Function of sertoli cells	help in spermiogenesis
A tall man with normal external genitalia married but no kids. Semen analysis showed azospermia. Most likely cause may be in	Sertoli cell
Sertoli cells produce	MIF (Mullerian inhibitory factor)
Married man with azospermia. Investigation of choice is	Serum FSH + LH

Function and development of seminiferous tubule requires=FSH and androgen
 Testosterone converted to estradiol by which hormone= FSH
 Conversion of testosterone to 17-beta estradiol in granulosa cells occurs by the influence of= FSH

Before Ovulation maturation of follicles occur by action of FSH

Maturation of follicles

Hormone responsible is FSH mainly and LH partly.

GnRH from hypothalamus release FSH and LH by pituitary

Which hormone stimulates release of FSH and LH	GnRH
During lactation, amenorrhea occurs due to	Inhibition of GnRH

The Sertoli cells also secrete inhibin Which stop FSH secretion

- ✓ www.fcpsworld.com or Contact 03129684658
- ✓ Hostel Facility is also available (for those who want to join physical classes)





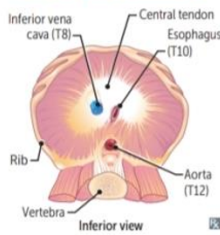
For Complete List of Papers Visit our website <https://fcpsworld.com/fcps-pastpapers>

GoldStandard FCPS 4th Edition V1 (Golk

Thorax

Diaphragm

Diaphragm structures



Structures perforating diaphragm:

- At T8: IVC, right phrenic nerve
- At T10: esophagus, vagus (CN 10; 2 trunks)
- At T12: aorta (red), thoracic duct (white), azygos vein (blue) ("At T-1-2 it's the red, white, and blue")

Diaphragm is innervated by C3, 4, and 5 (phrenic nerve). Pain from diaphragm irritation (eg, air, blood, or pus in peritoneal cavity) can be referred to shoulder (C5) and trapezius ridge (C3, 4).

Number of letters = T level:

T8: vena cava (IVC)

T10: (O)esophagus

T12: aortic hiatus

I ate (8) ten eggs at twelve.

C3, 4, 5 keeps the diaphragm alive.

Other bifurcations:

- The Common Carotid bifurcates at C4.
- The Trachea bifurcates at T4.
- The abdominal aorta bifurcates at L4.

ESOPHAGUS [All are pastpapers]

Oesophagus starts at level of:	Cricoid cartilage
Esophagus narrowest at:	Cricopharyngus
Esophagus constricted at:	Where crossed by arch of aorta

Breast [All are pastpapers]

Regarding breast:	15-20 lactiferous ducts
In a female major breast duct terminate into terminal ducts from terminal ducts it forms:	Lactiferous sinus
Terminal duct in breast form:	Lobule
Breast lies on:	Pect major

LYMPHATICS OF BREAST [All are pastpapers]

Pectoral group of axillary nodes drain:	Major part of the breast
Breast CA involving lateral part of breast drain by:	Ant pectoral group
Upper lateral quadrant of breast is drained by which grp of nodes:	Anterior axillary lymph node
Lymph drainage from nipple of breast is to:	Anterior axillary nodes
Inner medial lower quadrant of breast doesnt drain into	Inf phrenic
Lymph node of inner breast drains into all except:	Inf phrenic nodes
Breast Medial / Lower compartment does not:	Inferior phrenic lymph nodes
Medial quadrant of breast drain into?	Internal thoracic nodes
Pectrol lymph nodes drain maximum:	Major part of breast
Lateral side of breast drains into:	Pectoral lymph nodes
Lateral quadrants of breast drain into which nodes?	Pectoral nodes.
Lymphatic drainage from nipple of breast is:	Ant axillary lymph node
Breast outer quadrant:	Pectoral (anterior) group





For Complete List of Papers Visit our website <https://fcpsworld.com/fcps-pastpapers>

GoldStandard FCPS 4th Edition V1 (Golden 13)

Graves Disease

Hyperthyroidism

Graves disease



Most common cause of hyperthyroidism. Thyroid-stimulating immunoglobulin (IgG, can cause transient neonatal hyperthyroidism; type II hypersensitivity) stimulates TSH receptors on thyroid (hyperthyroidism, diffuse goiter), dermal fibroblasts (pretibial myxedema), and orbital fibroblasts (Graves orbitopathy). Activation of T-cells → lymphocytic infiltration of retroorbital space → ↑ cytokines (eg, TNF-α, IFN-γ) → ↑ fibroblast secretion of hydrophilic GAGs → ↑ osmotic muscle swelling, muscle inflammation, and adipocyte count → exophthalmos. Often presents during stress (eg, pregnancy). Associated with HLA-DR3 and HLA-B8.
Histology: tall, crowded follicular epithelial cells; scalloped colloid.

PAST PAPERS

57/314

A pt with exophthalmos and other hyperthyroid features and positive anti-thyroid antibodies is suggestive of	Graves disease
Exophthalmus is due to:	Inc TSI
Most common cause of hyperthyroidism:	Graves disease
Hyperthyroid, goiter and exophthalmos:	Graves disease
common cause of hyperthyroidism?	Grave's disease
What will increase in graves disease	t3
Graves ophthalmopathy:	Optic nerve compression

Vitamin D deficiency is associated with Ophthalmopathy in patients with Graves' hyperthyroidism

Key lympho, antibody

Hypothyroidism

Hashimoto thyroiditis

Also called chronic autoimmune thyroiditis. Most common cause of hypothyroidism in iodine-sufficient regions. Associated with HLA-DR3, ↑ risk of primary thyroid lymphoma (typically diffuse large B-cell lymphoma).
Findings: moderately enlarged, **nontender** thyroid. May be preceded by transient hyperthyroid state ("Hashitoxicosis") due to follicular rupture and thyroid hormone release.
Serology: ⊕ antithyroid peroxidase (antimicrosomal) and antithyroglobulin antibodies.
Histology: Hürthle cells, lymphoid aggregates with germinal centers.
Postpartum thyroiditis—mild, self-limited variant of Hashimoto thyroiditis arising < 1 year after delivery.

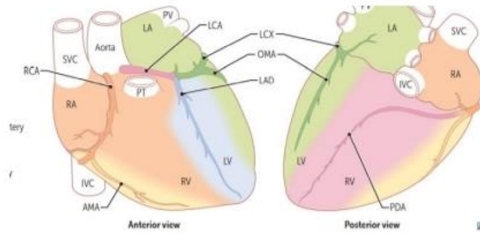
A 40-year known Hypothyroidism female was referred to endocrinologist for a mass in neck. FNAC shows increased lymphocytes and serology was adviseD.What is the most probable cause?	Hashimoto thyroiditis
Female with neck swelling hypothyroid dr orders some immunologic tests?	Hashimoto thyroiditis
Female swelling infront of neck. Hypothyroid Dr orders some immunological test. What is the diagnosis?	Hashimoto thyroiditis
Diagnosis for hashimotos	Antimicrosomal and anti-thyroglobulin

A 40-year known Hypothyroidism female was referred to endocrinologist for a mass in neck. FNAC shows increased lymphocytes and serology was advised. What is the most probable cause
Hashimoto



MI ECG LEADS

INFARCT LOCATION	LEADS WITH ST-SEGMENT ELEVATIONS OR Q WAVES
Anteroseptal (LAD)	V ₁ -V ₂
Anteroapical (distal LAD)	V ₃ -V ₄
Anterolateral (LAD or LCX)	V ₅ -V ₆
Lateral (LCX)	I, aVL
Inferior (RCA)	II, III, aVF
Posterior (PDA)	V ₇ -V ₉ , ST depression in V ₁ -V ₃ with tall R waves



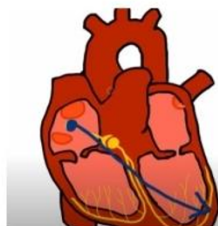
PAST PAPERS

Inferior wall MI occurs due to blockage of	Right coronary artery
Post 1/3 of interventricular septum is damaged due to MI. Artery involved is?	Right coronary artery
Inferior wall MI occurs due to blockage of which artery?	Right marginal
MI of posterolateral surface of heart. Vessel involved is	Left circumflex
ECG changes in lead V4 indicated involvement of which vessel	LAD
Infarction of apex of heart, vessel thrombosed will be	LAD
The circumflex artery supplies	Left atrium and left ventricle
Infarct in the lower segment of heart	LCX
ECG shows changes in leads II, III and avF. Diagnosis	Inferior wall MI
ST elevation in lead II, which artery involved	RCA

GoldStandard FCPS 4th Edition V1 (Golden 13)

Patient presented to ER with crushing chest pain for last 1 hour ON ECG there is ST segment elevation in lead II, III & AvF what's the diagnosis	Inferior wall MI
ST segment elevation in lead II which artery effected	right main coronary
A man presents to ER with ST depressions in II, III and avF and was advised angiography. The Most likely culprit artery is	RCA
Artery involved in inferior wall MI	Right marginal
Patient having ST elevation in Lead 2 and complete heart block vessel involved	RCA

NOTE: AXIS deviation



Left axis deviation on ECG is seen in	Rt ventricular myocardial damage
---------------------------------------	----------------------------------

- ✓ www.fcpsworld.com or Contact 03129684658
- ✓ Hostel Facility is also available (for those who want to join physical classes)



Www.Fcpsworld.com (Institute for Fcps & Md/Ms)

www.facebook.com/FcpsWorld

www.facebook.com/GynaeObsWorld

www.facebook.com/Ophtworld



For Complete List of Papers Visit our website <https://fcpsworld.com/fcps-pastpapers>



- ✓ Now you can join our Online classes for MD/MS & Fcps Preparation
- ✓ Complete course in 2months including Past paper discussion
- ✓ Join from anywhere using mobile/laptop using internet
- ✓ 100% feasible with job and 100% time adjustment for students
- ✓ www.fcpsworld.com or Contact 03129684658
- ✓ Hostel Facility is also available (for those who want to join physical classes)