

Www.Fcpsworld.com (Institute for Fcps & Md/Ms)

www.facebook.com/FcpsWorld

www.facebook.com/GynaeObsWorld

www.facebook.com/Ophtworld



For Complete List of Papers Visit our website <https://fcpsworld.com/fcps-pastpapers>



www.FCPSWORLD.com

GoldStandard Papers (FCPS-1)

Surgery & Allied

30th-November-2022 (Night)

Recent Past Papers

www.facebook.com/fcpsworld

- ✓ Clear FCPS-1 in **FIRST ATTEMPT**
- ✓ Entire course will be completed in 2 months.
- ✓ Live lectures via video Portal
- ✓ Daily Test session (Test discussion will be on Via Portal)
- ✓ Follow our complete guideline for FCPS-1
- ✓ Get Hands on 20,000 CPSP question (most of them repeat)
- ✓ Free study material, whatsapp group (only for our students)
- ✓ Don't Miss the chance. **(LIMITED SEATS AVAILABLE.)**
- ✓ WWW.FCPSWORLD.com
- ✓ WWW.facebook.com/fcpsworld
- ✓ For Details Phone# 03129684658



- ✓ Now you can join our Online classes for MD/MS & Fcps Preparation
- ✓ Complete course in 2months including Past paper discussion
- ✓ Join from anywhere using mobile/laptop using internet
- ✓ 100% feasible with job and 100% time adjustment for students
- ✓ www.fcpsworld.com or Contact 03129684658
- ✓ Hostel Facility is also available (for those who want to join physical classes)

Www.Fcpsworld.com (Institute for Fcps & Md/Ms)

www.facebook.com/FcpsWorld

www.facebook.com/GynaeObsWorld

www.facebook.com/Ophtworld



For Complete List of Papers Visit our website <https://fcpsworld.com/fcps-pastpapers>

(Errors and omissions excepted)

**FCPS-1 NOVEMBER Papers will Be uploaded on
Our website www.fcpsworld.com (keep visiting)**

Medicine & Allied 1 st December Afternoon
Medicine & Allied 1 st December Night
Medicine & Allied 2 nd December Morning
Medicine & Allied 2 nd December Afternoon
Medicine & Allied 2 nd December Night
Surgery & Allied 30 th November Afternoon
Surgery & Allied 30 th November Night
Surgery & Allied 1 st December Morning
Radiology 30 th November Morning
Radiology 30 th November Night
Anesthesia 30 th December Morning
OBG 1 st December Morning
OBG 1 st December Afternoon
OBG 2 nd December Night
Opthmology November 2022
Dentistry November 2022



- ✓ Now you can join our Online classes for MD/MS & Fcps Preparation
- ✓ Complete course in 2months including Past paper discussion
- ✓ Join from anywhere using mobile/laptop using internet
- ✓ 100% feasible with job and 100% time adjustment for students
- ✓ www.fcpsworld.com or Contact 03129684658
- ✓ Hostel Facility is also available (for those who want to join physical classes)



For Complete List of Papers Visit our website <https://fcpsworld.com/fcps-pastpapers>

Join Last Min Revision Live interactive session starting from 4th of February 2022 and clear exam in 1st Attempt in just 1200rs

Register at www.fcpsworld.com/register (8 day Session all systems)

Surgery & Allied 30th November Night www.fcpsworld.com

- Thalassemia trait characteristic feature-----> hba2 mote than 3.5
- Hormone therpay against malignant condition cause regression of cells involve mechanism-----> Apoptosis
- Join FcpsWorld Online Classes & Clear Exam in 1st Attempt
- Shortest pro erythrocytic stage is of-----> P. Falciparum
- Patient during surgery transfused with blood after blood transfusion patients presented with high grade fever rigors, chills and hypotension most suitable cause is-----> Bacterial contamination of blood
- With hypetemesis gravidarum having hypokalemia can present with other finding-----> Metabolic alkalosis
- Regarding enterokinase true is-----> Secreted in small intestine convert trypsinogen to trypsin
- Feature differentiate dysplasia from neoplasia-----> Invasion to basement membrane
- Join FcpsWorld Online Classes & Clear Exam in 1st Attempt
- Rathkes pouch derived from-----> Stomodium of forgut
- RTA having Increase reflexes and spasticity of muscles due to lesion in-----> UMN
- Structure has Intra pelvic extra pelvic extension-----> Round ligament of uterus
- Feature best supports the dx of polycythemia is-----> Increased red cell mass
- Join FcpsWorld Online Classes & Clear Exam in 1st Attempt
- Blow to temporal region caused extra dural hematoma due to involvement of artery-----> Middle meningeal artery
- Biopsy of that part shows granulomatous epitheloid cells. What type of necrosis will be seen-----> Caseous
- Anterior to left suprarenal gland is-----> Lesser sac



- ✓ Now you can join our Online classes for MD/MS & Fcps Preparation
- ✓ Complete course in 2months including Past paper discussion
- ✓ Join from anywhere using mobile/laptop using internet
- ✓ 100% feasible with job and 100% time adjustment for students
- ✓ www.fcpsworld.com or Contact 03129684658
- ✓ Hostel Facility is also available (for those who want to join physical classes)



For Complete List of Papers Visit our website <https://fcpsworld.com/fcps-pastpapers>

- Growth of grain positive cocci are catalase positive and coagulase negative. The etiological agent is-----> Staphylococcus epidermidis
- Mutation in sickle cell anemia is -----> Missense
- Join FcpsWorld Online Classes & Clear Exam in 1st Attempt
- Hb accepts proton from amino acid and DNA has amino acid-----> Histidine
- Sleep disturbance, increase weight increase appetite and genital hypoplasia likely cause is-----> Craniopharyngioma
- A doctor used rectus muscle from supra pubic region as a graft, artery should be grafted for its blood supply-----> Inferior epigastric
- Shortest pro erythrocytic phase is of -----> P. Falciparum
- Hyper excitability of neurons is due to decrease level of-----> Calcium
- Join FcpsWorld Online Classes & Clear Exam in 1st Attempt
- A player was hit by a ball on the posterior and medial aspect of elbow joint with fracture of medial epicondyle and damage ulnar nerve. This would result in sensory loss over-----> Medial 1/3 over palmar and dorsal surface
- What is the total volume of ICF-----> 28L
- Lesion in nucleus gracilis and cuneatus will cause-----> Asterognosis
- Derivative of neural crest cell is-----> Autonomic ganglia
- Pain in right hypochondrium, Nausea and jaundice Pain is going to shoulder region and upper back condition is associated-----> Cholecystitis
- Join FcpsWorld Online Classes & Clear Exam in 1st Attempt
- At the end of a marathon race, a person has-----> High glucagon and low insulin
- Accumulation of blood due to damage of middle meningeal artery at-----> Epidural
- Where does Secondary ossification center is located in this Later age-----> Lateral Epicondyle
- Join FcpsWorld Online Classes & Clear Exam in 1st Attempt
- Mineral of the bone is-----> Hydroxyapatite
- Patient had Cough and X-ray shows hilar lymphadenopathy, non caseating granuloma Present diagnoses is-----> Sarcoidosis



- ✓ Now you can join our Online classes for MD/MS & Fcps Preparation
- ✓ Complete course in 2months including Past paper discussion
- ✓ Join from anywhere using mobile/laptop using internet
- ✓ 100% feasible with job and 100% time adjustment for students
- ✓ www.fcpsworld.com or Contact 03129684658
- ✓ Hostel Facility is also available (for those who want to join physical classes)



For Complete List of Papers Visit our website <https://fcpsworld.com/fcps-pastpapers>

- Beta adrenergic cause effect-----> Cardiac acceleratio
- Sciatic nerve injury is having difficulty from sitting to standing position what muscle will be likely injured-----> Hamstring
- TVC starts at level-----> L5
- Artery involve posterior part of duodenum and upper duodenum bleeding Part-----> Gastroduodenal artery
- Join FcpsWorld Online Classes & Clear Exam in 1st Attempt
- New born baby with hx of fall developed hematoma site of hematoma formation-----> Below epicranial aponeurosis
- Extensor carpi ulnaris supplied by-----> Posterior interosseous nerve
- Join FcpsWorld Online Classes & Clear Exam in 1st Attempt
- A scientist was experimenting on mice, he gave croton oil several times to mice in a week, then asked about how promoters causes carcinogenesis-----> Clonal expansion
- Cimetidine mechanism of action is-----> H2 antagonist
- Sickle cell anemia having Hb 4.5 deeply jaundiced, Platelets 260000 and TLC 10000 and spleen is palpable diagnose is-----> Hemolytic crisis
- Join FcpsWorld Online Classes & Clear Exam in 1st Attempt
- Class III antiarrhythmic drug is-----> Sotalol
- Regarding glomerular capillary pressure-----> Decrease by 10 percent when BP decrease by 10 percent
- Most radiosensitive tumor is -----> Lymph node Tumor
- Drug that increases gastric emptying and increase lower esophageal sphincter tone-----> Metachlopramide
- Join FcpsWorld Online Classes & Clear Exam in 1st Attempt
- Epistaxis and Bleeding from lateral wall of nose artery involved is-----> Sphenopalatine artery
- Meningitis symptoms Glucose level 80 protein normal viral meningitis is suspected type of cells typical raises-----> Lymphocytes
- With cardiogenic shock is hypotensive the underlying mechanism is-----> Decrease contractile force of Myocardium
- Join FcpsWorld Online Classes & Clear Exam in 1st Attempt



- ✓ Now you can join our Online classes for MD/MS & Fcps Preparation
- ✓ Complete course in 2 months including Past paper discussion
- ✓ Join from anywhere using mobile/laptop using internet
- ✓ 100% feasible with job and 100% time adjustment for students
- ✓ www.fcpsworld.com or Contact 03129684658
- ✓ Hostel Facility is also available (for those who want to join physical classes)



For Complete List of Papers Visit our website <https://fcpsworld.com/fcps-pastpapers>

- The Sick role (patient role) involves-----> To save self from various obligations
- Parallel light rays focusing in front of retina is called-----> Myopia
- Oxidase enzyme and H₂O₂ present in-----> Serous
- Posterior abdominal wall mass arises central fibrosis with surrounding cells having pseudo rosette and polychromasia-----> Wilms tumor
- ICA passes through sphenoid bone from part-----> Body of Sphenoid
- Join FcpsWorld Online Classes & Clear Exam in 1st Attempt
- Patient had internal jugular lymph node biopsy in neck region after that he developed numbness of ear lobe nerve got injured-----> Greater auricular nerve
- L5 root value damaged result in result-----> Weak dorsiflexion
- White muscle-----> Gastrocnemius
- Join FcpsWorld Online Classes & Clear Exam in 1st Attempt
- Regarding parathyroid gland statement is true-----> Supplied by Superior and inferior thyroid arteries
- Female present with CA breast mastectomy done after removing fascia, muscle also removed movement will be effected-----> External rotation of scapula
- Join FcpsWorld Online Classes & Clear Exam in 1st Attempt
- An Alcoholic patient of Wernicke's encephalopathy presented with numbness and tingling of feet he has episodes of confusion and agitation and also has double vision it caused due to the deficiency of vitamin-----> B1
- Cholangiocarcinoma is caused by -----> Clonorchis Sinensis
- Most common opportunistic infection in patient with HIV-----> Candida
- Breast mass of regular margins non tender and mobile suitable diagnose is-----> Fibroadenoma
- Nerve runs along the radial artery in forearm-----> Superficial radial nerve
- Enzymes involved in cell remodeling of tissue-----> Collagenase
- Edema in bum patient is due to -----> Decrease albumin
- Muscle of forced expiration-----> Rectus abdominis



- ✓ Now you can join our Online classes for MD/MS & Fcps Preparation
- ✓ Complete course in 2 months including Past paper discussion
- ✓ Join from anywhere using mobile/laptop using internet
- ✓ 100% feasible with job and 100% time adjustment for students
- ✓ www.fcpsworld.com or Contact 03129684658
- ✓ Hostel Facility is also available (for those who want to join physical classes)



For Complete List of Papers Visit our website <https://fcpsworld.com/fcps-pastpapers>

- Having joint pain and renal stones with high level of calcium, high PTH, normal pthrp, low phosphate and micro hematuria this is related to -----> Primary hyperparathyroidism
- Is responsible for basophilia of a cell-----> Antioxidant
- Join FcpsWorld Online Classes & Clear Exam in 1st Attempt
- Pneumonia treated with beta lactamase remains hospital for 3 day symptoms resolved but developed diarrhea treatment should be for diarrhea-----> Metronidazole
- Anemia and tingling sensation he is also having difficulty in balance type of anemia he is suffering from-----> B12 Deficiency
- Presents with solitary firm nodule of thyroid and weight loss marker of thyroid cancer-----> Calcitonin
- During exercise person feels tired due to subjective feeling of-----> Increased heart rate
- Clarke nucleus root level is-----> T1.LL3
- Aspirin at low doses inhibit -----> Inhibit TXA2
- With PH 7.6 coi 41 and HCO3 31 acid base abnormality-----> Uncompensated metabolic alkalosis
- Join FcpsWorld Online Classes & Clear Exam in 1st Attempt
- Disease caused by mosquito bite-----> Filatiasis
- Prostate mainly drain into the-----> Internal illiac lymph node
- The most common source of systemic emboli-----> Left ventricular mural thrombosis
- Female presents with 3. Month hx of jaundice, itching, yellow sclera. Why is best test for dx-----> Antimitochodrial antibody
- Join FcpsWorld Online Classes & Clear Exam in 1st Attempt
- Man with gunshot injury 3 linger beneath xiphistemum and two episodes of hematoemesis site of lesion is-----> Lower Third of esophagous
- Congenital hydrocephalous is due to blockage in Cerebral aqueduct at-----> Mesencephlan
- An old women presented with jaundice and biliary colic, dx of cholelithiasis was made Synthesis of enzyme is likely to be increased-----> ALP



- ✓ Now you can join our Online classes for MD/MS & Fcps Preparation
- ✓ Complete course in 2months including Past paper discussion
- ✓ Join from anywhere using mobile/laptop using internet
- ✓ 100% feasible with job and 100% time adjustment for students
- ✓ www.fcpsworld.com or Contact 03129684658
- ✓ Hostel Facility is also available (for those who want to join physical classes)



For Complete List of Papers Visit our website <https://fcpsworld.com/fcps-pastpapers>

- Choriostoma best example is-----> Pancreatic tissue in gastric mucosa
- In cresenteric glomerulonephritis linear antibody complex deposition on GBM on biopsy, type of hypersensitivity it is-----> Type 2
- Join FcpsWorld Online Classes & Clear Exam in 1st Attempt
- Severe chest pain radiating to left arm of 3hr duration. ECG is inconclusive cardiac marker will be diagnostic of his condition in this case-----> CK.MB
- Fever rash on elbow and generalized cervical lymphadenopathy with TLC of 7230 what is suitable diagnose-----> Infectious Mononucelosis
- Mother milk has more nutrient vs cow milk-----> Lactose
- Avoid first pass-----> Sublingual
- When needle is passed to drain fluid from hydrocele structure is not pierced-----> Tunica albuginia
- Lost general sensation on the anterior 2/3 of the tongue due to injury to nerve-----> Lingual
- Join FcpsWorld Online Classes & Clear Exam in 1st Attempt
- An old man had urine incontinence and he did'nt do anything for treatment for few years.-----> Benign prostate hyperplasia
- Droplet infection can spread up to-----> 1.2 feet
- More phagocytic cells in blood-----> Neutrophils
- Abnormalities are common in meiosis if a complete chromosome is transferred to haploid cell what this abnormality is called-----> Tnsomy
- Join FcpsWorld Online Classes & Clear Exam in 1st Attempt
- An elderly lady taking rheumatoid arthritis drugs presents with weakness and malaise. Her retie count 0.1 %, HB 9, WBC 2x10* and platelets 20x10* bone marrow is hypercellular Likely cause is-----> Megaloblastic Anemia
- Staging for any malignancy done to see -----> Extend of spread
- Boy presented with painless swelling in the scrotum with no other complication, he gave hx of hit by ball very hard on scrotal area 4 months back what is possible diagnose-----> Hydrocele
- Drug causes tachycardia at normal dose-----> Pethidine
- Join FcpsWorld Online Classes & Clear Exam in 1st Attempt
- Posterolateral to thyroid gland is -----> Carotid sheath



- ✓ Now you can join our Online classes for MD/MS & Fcps Preparation
- ✓ Complete course in 2months including Past paper discussion
- ✓ Join from anywhere using mobile/laptop using internet
- ✓ 100% feasible with job and 100% time adjustment for students
- ✓ www.fcpsworld.com or Contact 03129684658
- ✓ Hostel Facility is also available (for those who want to join physical classes)



For Complete List of Papers Visit our website <https://fcpsworld.com/fcps-pastpapers>

- Sterilization of instruments with ethylene alcohol-----> 4.6 hours
- With delayed puberty having small testis with large legs and gynecomastia most suitable diagnose is-----> Klinefelter Syndrome
- Join FcpsWorld Online Classes & Clear Exam in 1st Attempt
- Cells provide nutrients to bone-----> Osteoblast
- Pathological process by activating caspases is -----> Apoptosis
- Osteosarcoma involves site-----> Metaphysis
- After a road traffic accident massive blood loss shock and MAP less than 60mmhg will activate now-----> CNS Ischemic response
- Join FcpsWorld Online Classes & Clear Exam in 1st Attempt
- Epigastric pain that is aggravating by taking food what is suitable diagnose-----> Gastric ulcer
- Anterior dislocation of femur on tibia ligament damaged is-----> Posterior cruciate ligament
- Regarding thymus of 10 year old boy true is-----> Extend from below thyroid to 4th costal cartilage
- Join FcpsWorld Online Classes & Clear Exam in 1st Attempt
- A player hiked to mountain, having Low PO₂ and developed dyspnea the likely etiology is-----> Hypoxic hypoxia
- Dilation of structure compress esophagus-----> Left atrium
- Join FcpsWorld Online Classes & Clear Exam in 1st Attempt
- Boy after strenuous exercise felt pain in lumbar region. Hx of stone what is suitable investigation to reach diagnose-----> Ultrasound KUB + CT KUB
- Major intracellular ion is-----> K
- Present with medial 2/3rd clavicle fracture medial part of clavicle is raised upward and anterior direction muscle raised this clavicle part-----> SCM
- If develops fracture of head of Scapula, nerve damaged that will lead to foot drop will be-----> Common Peroneal nerve
- Characteristic lesion of hereditary telangiectasia is found on-----> Lips
- Body metabolic response to trauma Skeletal muscle respond by-----> Increase proteolysis



- ✓ Now you can join our Online classes for MD/MS & Fcps Preparation
- ✓ Complete course in 2 months including Past paper discussion
- ✓ Join from anywhere using mobile/laptop using internet
- ✓ 100% feasible with job and 100% time adjustment for students
- ✓ www.fcpsworld.com or Contact 03129684658
- ✓ Hostel Facility is also available (for those who want to join physical classes)



For Complete List of Papers Visit our website <https://fcpsworld.com/fcps-pastpapers>

- X-ray shows a large shadow in chest, on echo it was related to tight ventricle of heart, containing hemorrhagic and necrotic area-----> Rhabdomyosarcoma
- Join FcpsWorld Online Classes & Clear Exam in 1st Attempt
- Left temporal gyrus/lobe lesion results in-----> Right superior quadrantanopia
- Below hymen boil on Labia, group of lymph nodes involved-----> Medial group Horizontal superficial inguinal LN
- Presented with hx of fever since last 10 days now with continuous chest pain that radiates to back and left parasternal rustling sound suffers from-----> Pericarditis
- OPD with loss of touch max two point discrimination distance can be checked between-----> Inter Scapular region
- Join FcpsWorld Online Classes & Clear Exam in 1st Attempt
- Lady with Lab reveals normal Calcium, Phosphorous and PTH. Lady is having osteoporosis what is etiology of this-----> Low Estrogen
- Prostate lymphatic drainage of it-----> Internal iliac and sacral
- Equal chance of each person being selected in a study is-----> Random sampling
- Cells containing dense granules and have ige antibodies on their cell membrane-----> Basophils
- One has largest cross section area-----> Capillaries
- Join FcpsWorld Online Classes & Clear Exam in 1st Attempt
- Amoeba commonly resides in-----> Cecum

▪ **Almost every student who joins our Online Classes**

Passes exam (Alhamduillah)



- ✓ Now you can join our Online classes for MD/MS & Fcps Preparation
- ✓ Complete course in 2months including Past paper discussion
- ✓ Join from anywhere using mobile/laptop using internet
- ✓ 100% feasible with job and 100% time adjustment for students
- ✓ www.fcpsworld.com or Contact 03129684658
- ✓ Hostel Facility is also available (for those who want to join physical classes)

Www.Fcpsworld.com (Institute for Fcps & Md/Ms)

www.facebook.com/FcpsWorld

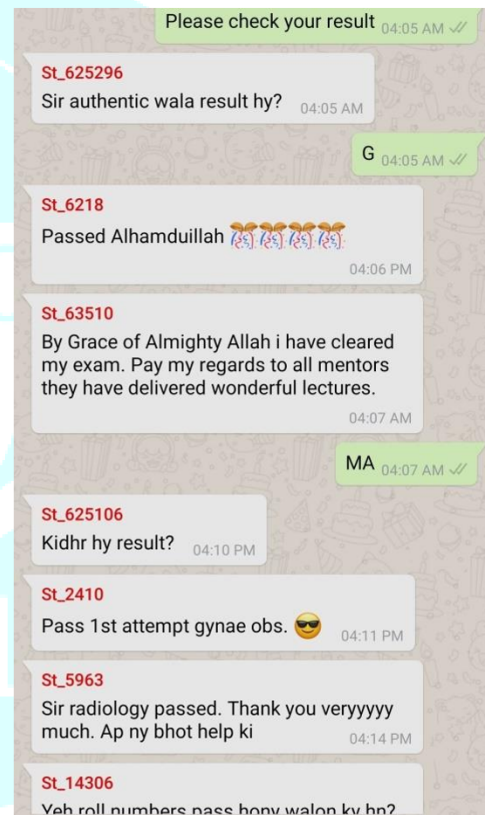
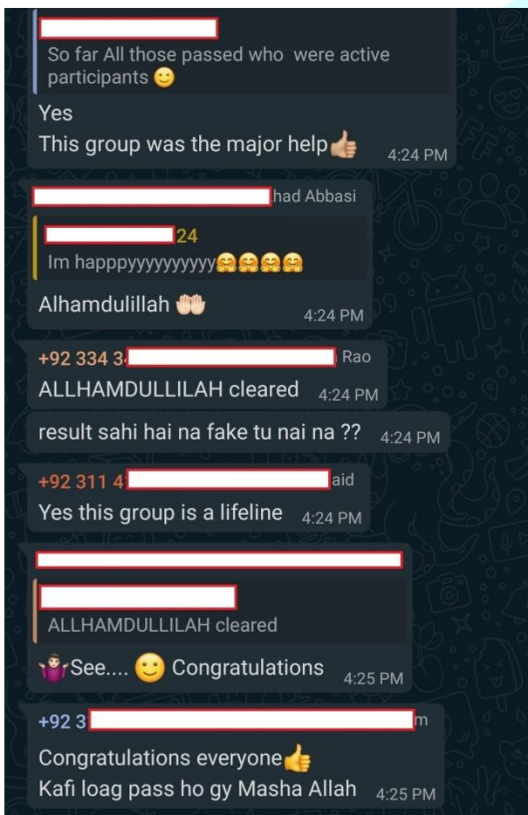
www.facebook.com/GynaeObsWorld

www.facebook.com/Ophtworld



For Complete List of Papers Visit our website <https://fcpsworld.com/fcps-pastpapers>

- Join FCPSWORLD Online Classes and clear your 100% concepts. Our lectures presentations are extract of past papers and consist on FirstAid, BRS, snell anatomy, kaplan neuroanatomy etc.



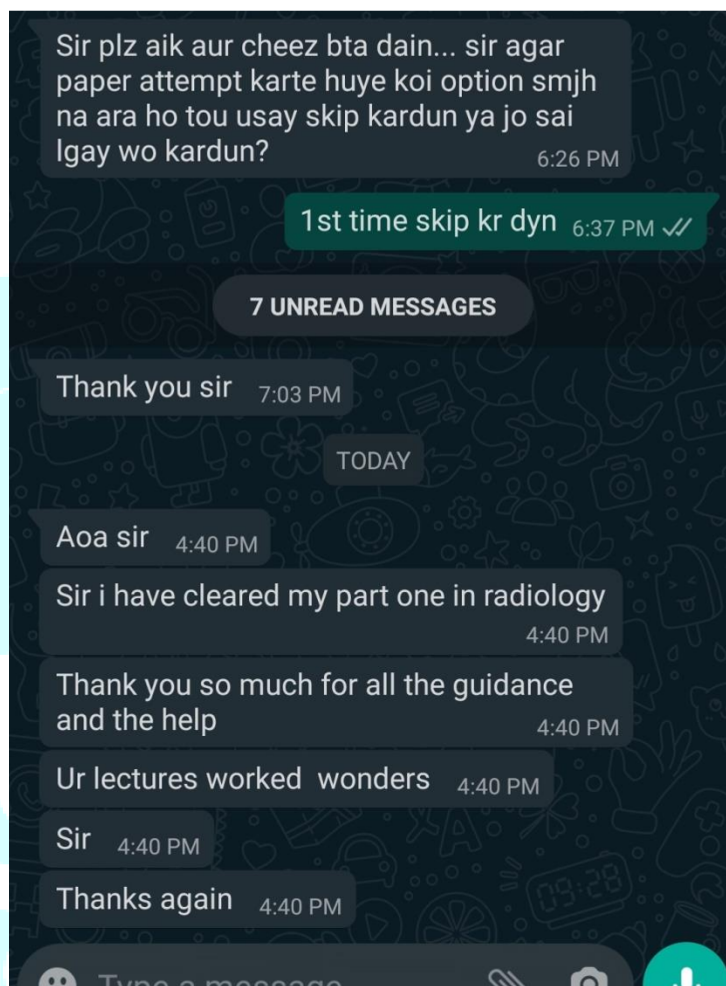
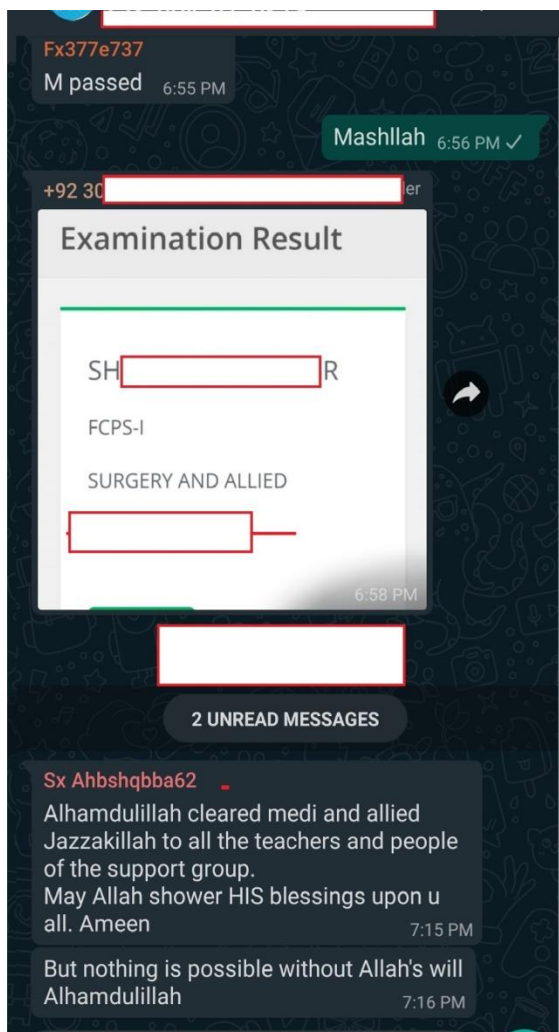
& Many More Success Stories



- ✓ Now you can join our Online classes for MD/MS & Fcps Preparation
- ✓ Complete course in 2months including Past paper discussion
- ✓ Join from anywhere using mobile/laptop using internet
- ✓ 100% feasible with job and 100% time adjustment for students
- ✓ www.fcpsworld.com or Contact 03129684658
- ✓ Hostel Facility is also available (for those who want to join physical classes)



For Complete List of Papers Visit our website <https://fcpsworld.com/fcps-pastpapers>



& Many More Success Stories



- ✓ Now you can join our Online classes for MD/MS & Fcps Preparation
- ✓ Complete course in 2months including Past paper discussion
- ✓ Join from anywhere using mobile/laptop using internet
- ✓ 100% feasible with job and 100% time adjustment for students
- ✓ www.fcpsworld.com or Contact 03129684658
- ✓ Hostel Facility is also available (for those who want to join physical classes)

Www.Fcpsworld.com (Institute for Fcps & Md/Ms)

www.facebook.com/FcpsWorld

www.facebook.com/GynaeObsWorld

www.facebook.com/Ophtworld



For Complete List of Papers Visit our website <https://fcpsworld.com/fcps-pastpapers>



FCPS-1 FEBRUARY 2022

REVISION COURSE

GOLDEN POINTS

PASTPAPERS 2009-2021

HIGH YIELD CONCEPTS

Online Interactive Classes

REGISTER NOW!

20* SEATS ONLY



FEE RS 1200 ONLY

WWW.FCPSWORLD.COM/REGISTER

SURGERY & ALLIED | MEDICINE & ALLIED
| GYNAE OBS | ENT | PATHOLOGY | RADIOLOGY
| OPTH | ANESTHESIA | DENTISTRY | PSY |

CALL US NOW
+92 312 9684658



- ✓ Now you can join our Online classes for MD/MS & Fcps Preparation
- ✓ Complete course in 2 months including Past paper discussion
- ✓ Join from anywhere using mobile/laptop using internet
- ✓ 100% feasible with job and 100% time adjustment for students
- ✓ www.fcpsworld.com or Contact 03129684658
- ✓ Hostel Facility is also available (for those who want to join physical classes)

Www.Fcpsworld.com (Institute for Fcps & Md/Ms)

www.facebook.com/FcpsWorld

www.facebook.com/GynaeObsWorld

www.facebook.com/Ophworld



For Complete List of Papers Visit our website <https://fcpsworld.com/fcps-pastpapers>

FCPS-1 ONLINE COURSE

Join FcpsWorld Online preparation courses and clear exam in 1st Attempt.

WWW.FCPSWORLD.COM



Fcpsworld



www.fcpsworld.com

BUY 3rd edition ONLY



- ✓ Now you can join our Online classes for MD/MS & Fcps Preparation
- ✓ Complete course in 2months including Past paper discussion
- ✓ Join from anywhere using mobile/laptop using internet
- ✓ 100% feasible with job and 100% time adjustment for students
- ✓ www.fcpsworld.com or Contact 03129684658
- ✓ Hostel Facility is also available (for those who want to join physical classes)

Www.Fcpsworld.com (Institute for Fcps & Md/Ms)

www.facebook.com/FcpsWorld

www.facebook.com/GynaeObsWorld

www.facebook.com/Ophtworld



For Complete List of Papers Visit our website <https://fcpsworld.com/fcps-pastpapers>

GoldStandard FCPS (Buy 3rd edition only)

- ✓ November 2022 papers (recent updated)
- ✓ Revise 11 years pastpapers in just 11 days

✓ Authentic most repeated papers.

✓ Subject wise topic wise MCQS

✓ 1 liner for rapid revision. (Cram them)

✓ Clear FCPS-1 in 1st Attempt (Dont miss chance)

✓ Free Cash on Delivery Order at

www.fcpsworld.com/order-book



- ✓ Now you can join our Online classes for MD/MS & Fcps Preparation
- ✓ Complete course in 2months including Past paper discussion
- ✓ Join from anywhere using mobile/laptop using internet
- ✓ 100% feasible with job and 100% time adjustment for students
- ✓ www.fcpsworld.com or Contact 03129684658
- ✓ Hostel Facility is also available (for those who want to join physical classes)



For Complete List of Papers Visit our website <https://fcpsworld.com/fcps-pastpapers>

GoldStandard FCPS 4th Edition V1 (Golden 13)

Table of Content

1. CVS SYSTEM	Page#5
2. ENDOCRINE SYSTEM	Page#33
3. RENAL SYSTEM	Page#69
4. RESPIRATORY SYSTEM	Page#89
5. GIT SYSTEM	Page#113
6. Hematology	Page#145
7.	
8. ANATOMY	
a. UPPER LIMB	Page#169
b. LOWER LIMB	Page#200
c. THORAX	Page#225
d. NEUROANATOMY	Page#233
e. HEAD AND NECK	Page#270
f. ABDOMEN PELVIS	Page#281
g. Histology	Page#292
h. General Anatomy	Page#294
9. PHARMACOLOGY	Page#298
10. MICROBIOLOGY	
a. Bacteriology	Page#301
b. Virology	Page#309
c. Fungi	Page#3011

NOTE:

1. MCQs should be covered in retrograde fashion
2. All students who have ordered book will receive November papers in PDF as well via whatsapp (Do them first)
3. All written In **tabular** form or in **points** form are pastpapers
4. Each and every word from this book is from pastpapers (Except UPPER/LOWER LIMBS that has bit of explanation)
5. Students are highly advised to take Last Minute revision course starting in last 10 days of EXAMS (All points and systems will be covered 3 hr class daily)
Register: www.fcpsworld.com/register

If you have less time first do PDF files sent by us, then open each topic just CRAM TABULAR PASTPAPERS, then open each system and cram MISC 2019-2021 papers of all systems after completing those start MISC 2009-2021 of from system one.



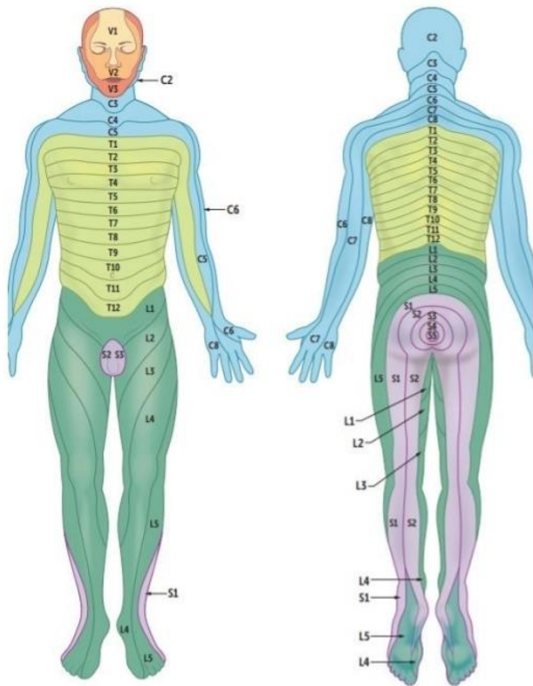


For Complete List of Papers Visit our website <https://fcpsworld.com/fcps-pastpapers>

GoldStandard FCPS 4th Edition V1 (Golden 13)

- Superficial fascia of the scalp is mixture of → Loose areolar and adipose tissue
- The axillary sheath is a continuation of → Prevertebral fascia
- Thyroid gland moves with swallowing because it is enclosed in → Pretracheal fascia
- Trauma to one kidney without the perforation of Gerota fascia, the blood goes to → Inferiorly to the pelvis
- True regarding the posterior triangle of neck is → Roof formed by investing layer of deep cervical fascia

DERMATOMES



C2	Posterior half of skull
C3	High turtleneck shirt Diaphragm and gallbladder pain referred to the right shoulder via phrenic nerve ✓ C3, 4, 5 keeps the diaphragm alive
C4	Low-collar shirt
C6	Includes thumbs ✓ Thumbs up sign on left hand looks like
T4	✓ At the nipple ✓ T4 at the teat pore
T7	✓ At the xiphoid process 7 letters in xiphoid
T10	✓ At the umbilicus (belly button) Point of referred pain in early appendicitis
L1	✓ At the Inguinal Ligament
L4	✓ Includes the kneecaps Down on ALL 4's
S2, S3, S4	✓ Sensation of penile and anal zones S2, 3, 4 keep the penis off the floor

GREAT TOE	L4
LITTLE TOE	S1
KNEE	L4
NIPPLE	T4
UMBILICUS	T10
RING AND LITTLE FINGER	C8 RING, T1 LITTLE
THUMB	C6

anal area dermatome	s3-4
dermatome of lateral wrist	c6
dermatomy of thumb	c6

Join FcpsWorld Online Classes and Clear exam in 1st Attempt

GoldStandard FCPS 4th Edition V1 (Golden 13)

knee dermatome	l4
lower end of clavicle dermatome	c3-4
pain in calf and medial malleolus dermatome	l4

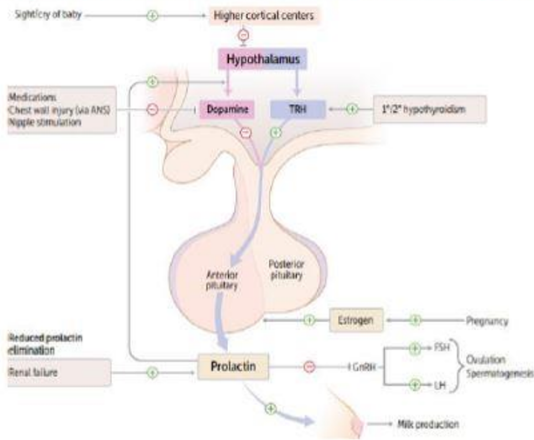




For Complete List of Papers Visit our website <https://fcpsworld.com/fcps-pastpapers>

Prolectin

1. Stimulates milk production in breast; inhibits ovulation in females and spermatogenesis in males by inhibiting **GnRH** synthesis and release (thus **LH, FSH release**).
 - Hypothalamus -> Decr GnRH secretion -> Decr FSH/LH -> Decr estradiol in females, Decr testosterone in males
 - Alveolar Cells of Breast Ducts -> Milk production and release -> Lactation
 - Prolectin release dopamine which inhibits prolectin
2. Release by sucking, voice of baby
3. Prolectin secretion from anterior pituitary is tonically inhibited by **dopamine** Prolectin.



PAST PAPERS

Potent stimulus for prolectin release is?	Suckling reflex of baby
A 9-month pregnant presents with complaints of lactation (milky discharge). This is likely due to	Prolactin
Secretion of milk in mammary gland is due to	Prolactin
During lactation, ovulation is inhibited because of inhibition of GnRH by?	Prolactin
hormone of the anterior pituitary is under direct inhibitory control of hypothalamus?	Prolactin
During lactation, ovulation is inhibited because of inhibition of GnRH hv?	Prolactin



- ✓ Now you can join our Online classes for MD/MS & Fcps Preparation
- ✓ Complete course in 2months including Past paper discussion
- ✓ Join from anywhere using mobile/laptop using internet
- ✓ 100% feasible with job and 100% time adjustment for students
- ✓ www.fcpsworld.com or Contact 03129684658
- ✓ Hostel Facility is also available (for those who want to join physical classes)



For Complete List of Papers Visit our website <https://fcpsworld.com/fcps-pastpapers>

GoldStandard FCPS 4th Edition V1 (Golden 13)

ENDOCARDITIS

- Nonbacterial endocarditis is seen in → Neoplasms, hypercuaguable state
- Most common cause of death in rheumatic fever → Myocarditis
- Commonly use Tri-cuspid valvule
- common in IV-drug users
- Libman-Sack Endocarditis occurs in → SLE
- DOC is benzethins pencilline if allergic give genta+vanco
- Correct infective endocarditis sequence
Damage valve, Thrombus, Bacteremia, Perforation (VT-BP)

Bacterial endocarditis Acute—*S aureus* (high virulence). Large vegetations on previously normal valves. Rapid onset.
Subacute—viridans streptococci (low virulence). Smaller vegetations on congenitally abnormal or diseased valves. Sequela of dental procedures. Gradual onset.

Tricuspid valve endocarditis is associated with IV drug use (don't "tri" drugs). Associated with *S aureus*, *Pseudomonas*, and *Candida*.
S bovis (*galloyticus*) is present in colon cancer, *S epidermidis* on prosthetic valves.

PAST PAPERS

Non thrombotic bacterial endocarditis is frequently associated with?	Terminal neoplasm
A known case of rheumatic mitrai stenosis developed fever, lassitude body ache after tooth extraction. O/E splinter haemorrhages and splenomegaly was noted Subacute endocarditis is suspected. Most likely organism on blood culture would be?	Strep viridans
Most common heart valve affected in diseases is	Tricuspid
Female pt. has valvular heart disease, such pt. are at risk of developing infective endocarditis, which organism is commonly responsible	streptococcus viridians
On Examination there are skin spots and nail bed hemorrhages on both hands & a Grade-4 Diastolic Murmur, past history is unremarkable. Patient is most likely suffering from	Infective Endocarditis
Developed fever, lassitude body ache after tooth extraction. Most likely organism on blood culture would be	Strep viridians
Infective endocarditis Patient is allergic to penicillin give medication	Vancomycin + gentamicin
School teacher who after death was diagnosed as a case of endocarditis and lymphocytic infiltration of cardiac tissues	Coxsackie virus



- ✓ Now you can join our Online classes for MD/MS & Fcps Preparation
- ✓ Complete course in 2months including Past paper discussion
- ✓ Join from anywhere using mobile/laptop using internet
- ✓ 100% feasible with job and 100% time adjustment for students
- ✓ www.fcpsworld.com or Contact 03129684658
- ✓ Hostel Facility is also available (for those who want to join physical classes)



For Complete List of Papers Visit our website <https://fcpsworld.com/fcps-pastpapers>

GoldStandard FCPS 4th Edition V1 (Golden 13)

True about CSF

Slightly acidic than plasma

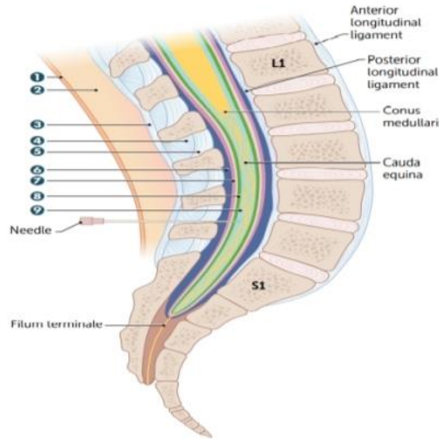
LUMBAR PUNCTURE

In adults, spinal cord ends at lower border of L1–L2 vertebrae. Subarachnoid space (which contains the CSF) extends to lower border of S2 vertebra. Lumbar puncture is usually performed between L3–L4 or L4–L5 (level of cauda equina).

Goal of lumbar puncture is to obtain sample of CSF without damaging spinal cord. To **keep** the cord **alive**, keep the spinal needle between **L3** and **L5**.

Needle passes through:

- 1 skin
- 2 fascia and fat
- 3 supraspinous ligament
- 4 interspinous ligament
- 5 ligamentum flavum
- 6 epidural space (epidural anaesthesia needle stops here)
- 7 dura mater
- 8 arachnoid mater
- 9 subarachnoid space (CSF collection occurs here)



Past papers

During LP after crossing flavum at L3, L4 the needle touches which structure first	Epidural space
Ideal site for lumbar puncture is	Below L4
Regarding Epidural space extension	Foramen magnum to S2
Site of Epidural anaesthesia for patient undergoing Vaginal hysterectomy is	Sacral hiatus
Spinal cord is suspended in dura by	Denticulate ligament
Structure most likely pierced by needle during lumbar puncture is	Ligamentum flavum
Which of the following structure is pierced in paramedian approach	Ligamentum flavum
The most common site of spinal anaesthesia is?	Subarachnoid
Subarachnoid space ends at the level of	S2-S3
Cauda equina:	Anterior & posterior roots of spinal cord from L1 to L5

Note:

Herniation between L4-L5 affect which spinal segment?	Lumbar
Between L4 and L5 disc herniation, which spinal nerve will be affected	L5
Herniation between L4-L5 affect which spinal segment	L4

Centers of Brain

- Vomiting centre located in → Medulla
- Cough centre is present in → medulla
- Respiratory centre located in → Medulla oblongata

Past papers



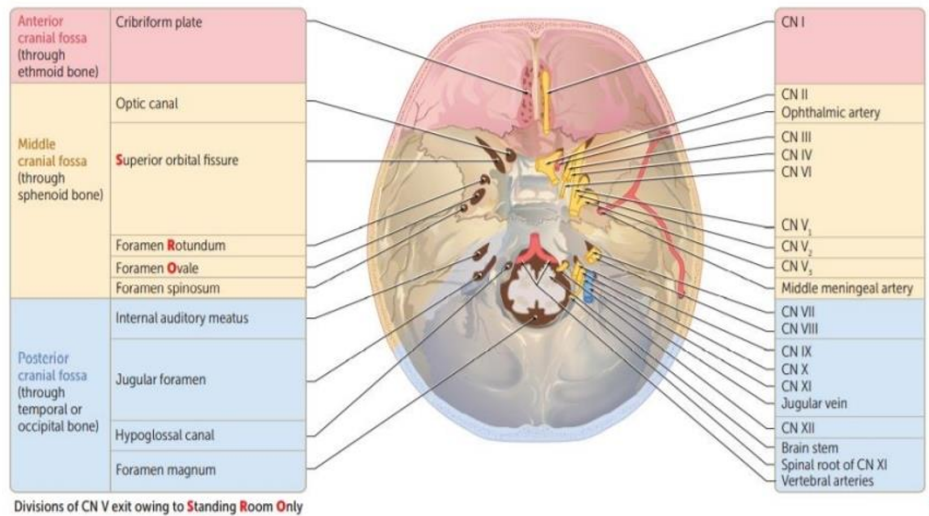


For Complete List of Papers Visit our website <https://fcpsworld.com/fcps-pastpapers>

GoldStandard FCPS 4th Edition V1 (Golden 13)

HEAD AND NECK

Foramin of Skull



Anterior cranial Fossa (ethmoid bone)	Cribriform plate	CN 1
Middle Cranial Fossa (sphenoid bone)	Optic Canal	CN2 Ophthalmic artery, central retinal vein
	Superior orbital fissure	CN2,4,6 CN 5-V1
	Foramen rotundum	CN5-V2 → maxillary branch of trigeminal nerve
	Foramen ovale	CN5-V3 → mandibular branch of trigeminal nerve
Posterior Cranial Fossa (temporal or occipital bone)	Foramen spinosum	Middle meningeal artery
	Internal auditory meatus	CN7, 8
	Jugular foramen	CN 9,10,11 Jugular vein
	Hypoglossal canal	CN12
	Foramen magnum	Brain stem Spinal root of CN 12 Vertebral arteries

Pastpapers

270/314



Accessory meningeal artery enters through which foremen----->Ovale
Accessory nerve passes through which foramen----->Jugular foramen
Foramen Rotundum damaged which structure will be severed----->Maxillary branch of trigeminal nerve.
Lesion below foramen Ovale causes paralysis of----->Lower part of face/Jaw
Mandibular branch of Trigeminal nerve passes through----->Foramen ovale
Middle meningeal artery in the----->Foramen Spinosum
Nerve in foramen Ovale damaged nerve supply of which part will be affected----->Lower face
Vagus nerve passes through----->jugular foramen





For Complete List of Papers Visit our website <https://fcpsworld.com/fcps-pastpapers>

FSH & LH

LH

Luteinizing Hormone in males acts on = Leydig cells

1. **Luteinizing** hormone acts on = **Leydig** cells to produce **Testosterone**
2. Function of LH before ovulation is=Convert most of the **granulosa** cells into **lutein** cells

Join FcpsWorld Online Classes and Clear exam in 1st Attempt

GoldStandard FCPS 4th Edition V1 (Golden 13

FSH

3. **FSH** acts on =**Sertoli** cells to do **Spermatogenesis** → Related to **Azoospermia**
[**LighT** is **FaSt**]

- Development of seminiferous tubules
- Convert testosterone into estradiol
- Helps in maturation of follicles
- Inhibited by **INHIBIN**

Spermatogenesis is stimulated by	FSH and testosterone
LH act through:	cAMP
Hormone causing increase release of testosterone:	Luteinizing hormone
LH act on which testicular cells mostly	Leydig cells

Function of sertoli cells	help in spermiogenesis
A tall man with normal external genitalia married but no kids. Semen analysis showed azospermia. Most likely cause may be in	Sertoli cell
Sertoli cells produce	MIF (Mullerian inhibitory factor)
Married man with azospermia. Investigation of choice is	Serum FSH + LH

Function and development of seminiferous tubule requires=FSH and androgen
Testosterone converted to estradiol by which hormone= FSH
Conversion of testosterone to 17-beta estradiol in granulosa cells occurs by the influence of= FSH

Before Ovulation maturation of follicles occur by action of FSH

Maturation of follicles

Hormone responsible is FSH mainly and LH partly.

GnRH from hypothalamus release FSH and LH by pituitary

Which hormone stimulates release of FSH and LH	GnRH
During lactation, amenorrhea occurs due to	Inhibition of GnRH

The Sertoli cells also secrete inhibin Which stop FSH secretion

- ✓ www.fcpsworld.com or Contact 03129684658
- ✓ Hostel Facility is also available (for those who want to join physical classes)





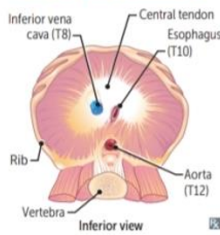
For Complete List of Papers Visit our website <https://fcpsworld.com/fcps-pastpapers>

GoldStandard FCPS 4th Edition V1 (Golk

Thorax

Diaphragm

Diaphragm structures



Structures perforating diaphragm:

- At T8: IVC, right phrenic nerve
- At T10: esophagus, vagus (CN 10; 2 trunks)
- At T12: aorta (red), thoracic duct (white), azygos vein (blue) ("At T-1-2 it's the red, white, and blue")

Diaphragm is innervated by C3, 4, and 5 (phrenic nerve). Pain from diaphragm irritation (eg, air, blood, or pus in peritoneal cavity) can be referred to shoulder (C5) and trapezius ridge (C3, 4).

Number of letters = T level:

T8: vena cava (IVC)

T10: (O)esophagus

T12: aortic hiatus

I ate (8) ten eggs at twelve.

C3, 4, 5 keeps the diaphragm alive.

Other bifurcations:

- The Common Carotid bifurcates at C4.
- The Trachea bifurcates at T4.
- The abdominal aorta bifurcates at L4.

ESOPHAGUS [All are pastpapers]

Oesophagus starts at level of:	Cricoid cartilage
Esophagus narrowest at:	Cricopharyngus
Esophagus constricted at:	Where crossed by arch of aorta

Breast [All are pastpapers]

Regarding breast:	15-20 lactiferous ducts
In a female major breast duct terminate into terminal ducts from terminal ducts it forms:	Lactiferous sinus
Terminal duct in breast form:	Lobule
Breast lies on:	Pect major

LYMPHATICS OF BREAST [All are pastpapers]

Pectoral group of axillary nodes drain:	Major part of the breast
Breast CA involving lateral part of breast drain by:	Ant pectoral group
Upper lateral quadrant of breast is drained by which grp of nodes:	Anterior axillary lymph node
Lymph drainage from nipple of breast is to:	Anterior axillary nodes
Inner medial lower quadrant of breast doesnt drain into	Inf phrenic
Lymph node of inner breast drains into all except:	Inf phrenic nodes
Breast Medial / Lower compartment does not:	Inferior phrenic lymph nodes
Medial quadrant of breast drain into?	Internal thoracic nodes
Pectrol lymph nodes drain maximum:	Major part of breast
Lateral side of breast drains into:	Pectoral lymph nodes
Lateral quadrants of breast drain into which nodes?	Pectoral nodes.
Lymphatic drainage from nipple of breast is:	Ant axillary lymph node
Breast outer quadrant:	Pectoral (anterior) group





For Complete List of Papers Visit our website <https://fcpsworld.com/fcps-pastpapers>

GoldStandard FCPS 4th Edition V1 (Golden 13)

Graves Disease

Hyperthyroidism

Graves disease



Most common cause of hyperthyroidism. Thyroid-stimulating immunoglobulin (IgG, can cause transient neonatal hyperthyroidism; type II hypersensitivity) stimulates TSH receptors on thyroid (hyperthyroidism, diffuse goiter), dermal fibroblasts (pretibial myxedema), and orbital fibroblasts (Graves orbitopathy). Activation of T-cells → lymphocytic infiltration of retroorbital space → ↑ cytokines (eg, TNF-α, IFN-γ) → ↑ fibroblast secretion of hydrophilic GAGs → ↑ osmotic muscle swelling, muscle inflammation, and adipocyte count → exophthalmos. Often presents during stress (eg, pregnancy). Associated with HLA-DR3 and HLA-B8.
Histology: tall, crowded follicular epithelial cells; scalloped colloid.

PAST PAPERS

57/314

A pt with exophthalmos and other hyperthyroid features and positive anti-thyroid antibodies is suggestive of	Graves disease
Exophthalmus is due to:	Inc TSI
Most common cause of hyperthyroidism:	Graves disease
Hyperthyroid, goiter and exophthalmos:	Graves disease
common cause of hyperthyroidism?	Grave's disease
What will increase in graves disease	t3
Graves ophthalmopathy:	Optic nerve compression

Vitamin D deficiency is associated with Ophthalmopathy in patients with Graves' hyperthyroidism

Key lympho, antibody

Hypothyroidism

Hashimoto thyroiditis

Also called chronic autoimmune thyroiditis. Most common cause of hypothyroidism in iodine-sufficient regions. Associated with HLA-DR3, ↑ risk of primary thyroid lymphoma (typically diffuse large B-cell lymphoma).
Findings: moderately enlarged, **nontender** thyroid. May be preceded by transient hyperthyroid state ("Hashitoxicosis") due to follicular rupture and thyroid hormone release.
Serology: ⊕ antithyroid peroxidase (antimicrosomal) and antithyroglobulin antibodies.
Histology: Hürthle cells, lymphoid aggregates with germinal centers.
Postpartum thyroiditis—mild, self-limited variant of Hashimoto thyroiditis arising < 1 year after delivery.

A 40-year known Hypothyroidism female was referred to endocrinologist for a mass in neck. FNAC shows increased lymphocytes and serology was adviseD.What is the most probable cause?	Hashimoto thyroiditis
Female with neck swelling hypothyroid dr orders some immunologic tests?	Hashimoto thyroiditis
Female swelling infront of neck. Hypothyroid Dr orders some immunological test. What is the diagnosis?	Hashimoto thyroiditis
Diagnosis for hashimotos	Antimicrosomal and anti-thyroglobulin

A 40-year known Hypothyroidism female was referred to endocrinologist for a mass in neck. FNAC shows increased lymphocytes and serology was advised. What is the most probable cause
Hashimoto

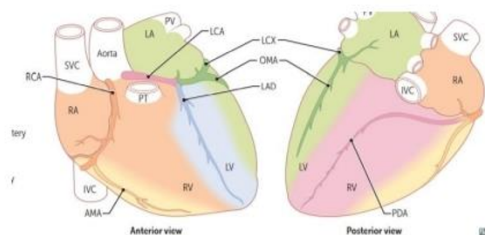




For Complete List of Papers Visit our website <https://fcpsworld.com/fcps-pastpapers>

MI ECG LEADS

INFARCT LOCATION	LEADS WITH ST-SEGMENT ELEVATIONS OR Q WAVES
Anteroseptal (LAD)	V ₁ -V ₂
Anteroapical (distal LAD)	V ₃ -V ₄
Anterolateral (LAD or LCX)	V ₅ -V ₆
Lateral (LCX)	I, aVL
Inferior (RCA)	II, III, aVF
Posterior (PDA)	V ₇ -V ₉ , ST depression in V ₁ -V ₃ with tall R waves



PAST PAPERS

Inferior wall MI occurs due to blockage of	Right coronary artery
Post 1/3 of interventricular septum is damaged due to MI. Artery involved is?	Right coronary artery
Inferior wall MI occurs due to blockage of which artery?	Right marginal
MI of posterolateral surface of heart. Vessel involved is	Left circumflex
ECG changes in lead V4 indicated involvement of which vessel	LAD
Infarction of apex of heart, vessel thrombosed will be	LAD
The circumflex artery supplies	Left atrium and left ventricle
Infarct in the lower segment of heart	LCX
ECG shows changes in leads II, III and avF. Diagnosis	Inferior wall MI
ST elevation in lead II, which artery involved	RCA

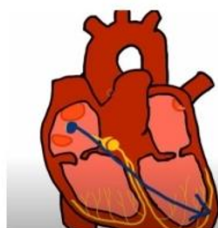
18 | Page

Join FcpsWorld Online Classes and Clear exam in 1st Attempt

GoldStandard FCPS 4th Edition V1 (Golden 13)

Patient presented to ER with crushing chest pain for last 1 hour ON ECG there is ST segment elevation in lead II, III & AvF what's the diagnosis	Inferior wall MI
ST segment elevation in lead II which artery effected	right main coronary
A man presents to ER with ST depressions in II, III and avF and was advised angiography. The Most likely culprit artery is	RCA
Artery involved in inferior wall MI	Right marginal
Patient having ST elevation in Lead 2 and complete heart block vessel involved	RCA

NOTE: AXIS deviation



Left axis deviation on ECG is seen in	Rt ventricular myocardial damage
---------------------------------------	----------------------------------

- ✓ www.fcpsworld.com or Contact 03129684658
- ✓ Hostel Facility is also available (for those who want to join physical classes)



Www.Fcpsworld.com (Institute for Fcps & Md/Ms)

www.facebook.com/FcpsWorld

www.facebook.com/GynaeObsWorld

www.facebook.com/Ophtworld



For Complete List of Papers Visit our website <https://fcpsworld.com/fcps-pastpapers>



- ✓ Now you can join our Online classes for MD/MS & Fcps Preparation
- ✓ Complete course in 2months including Past paper discussion
- ✓ Join from anywhere using mobile/laptop using internet
- ✓ 100% feasible with job and 100% time adjustment for students
- ✓ www.fcpsworld.com or Contact 03129684658
- ✓ Hostel Facility is also available (for those who want to join physical classes)