

Www.Fcpsworld.com (Institute for Fcps & Md/Ms)

[www.facebook.com/FcpsWorld](https://www.facebook.com/FcpsWorld)

[www.facebook.com/GynaeObsWorld](https://www.facebook.com/GynaeObsWorld)

[www.facebook.com/Ophtworld](https://www.facebook.com/Ophtworld)



For Complete List of Papers Visit our website <https://fcpsworld.com/fcps-pastpapers>



[www.FCPSWORLD.com](http://www.FCPSWORLD.com)

## GoldStandard Papers (FCPS-1)

### Surgery & Allied

30<sup>th</sup> -November-2022 (Afternoon)

Recent Past Papers

[www.facebook.com/fcpsworld](https://www.facebook.com/fcpsworld)

- ✓ Clear FCPS-1 in **FIRST ATTEMPT**
- ✓ Entire course will be completed in 2 months.
- ✓ Live lectures via video Portal
- ✓ Daily Test session (Test discussion will be on Via Portal)
- ✓ Follow our complete guideline for FCPS-1
- ✓ Get Hands on 20,000 CPSP question (most of them repeat)
- ✓ Free study material, whatsapp group (only for our students)
- ✓ Don't Miss the chance. **(LIMITED SEATS AVAILABLE.)**
- ✓ [WWW.FCPSWORLD.com](http://WWW.FCPSWORLD.com)
- ✓ [WWW.facebook.com/fcpsworld](https://WWW.facebook.com/fcpsworld)
- ✓ For Details Phone# 03129684658



- ✓ Now you can join our Online classes for MD/MS & Fcps Preparation
- ✓ Complete course in 2months including Past paper discussion
- ✓ Join from anywhere using mobile/laptop using internet
- ✓ 100% feasible with job and 100% time adjustment for students
- ✓ [www.fcpsworld.com](http://www.fcpsworld.com) or Contact 03129684658
- ✓ Hostel Facility is also available (for those who want to join physical classes)

Www.Fcpsworld.com (Institute for Fcps & Md/Ms)

[www.facebook.com/FcpsWorld](https://www.facebook.com/FcpsWorld)

[www.facebook.com/GynaeObsWorld](https://www.facebook.com/GynaeObsWorld)

[www.facebook.com/Ophtworld](https://www.facebook.com/Ophtworld)



For Complete List of Papers Visit our website <https://fcpsworld.com/fcps-pastpapers>

(Errors and omissions excepted)

**FCPS-1 NOVEMBER Papers will Be uploaded on  
Our website [www.fcpsworld.com](http://www.fcpsworld.com) (keep visiting)**

Medicine & Allied 1 <sup>st</sup> December Afternoon
Medicine & Allied 1 <sup>st</sup> December Night
Medicine & Allied 2 <sup>nd</sup> December Morning
Medicine & Allied 2 <sup>nd</sup> December Afternoon
Medicine & Allied 2 <sup>nd</sup> December Night
Surgery & Allied 30 <sup>th</sup> November Afternoon
Surgery & Allied 30 <sup>th</sup> November Night
Surgery & Allied 1 <sup>st</sup> December Morning
Radiology 30 <sup>th</sup> November Morning
Radiology 30 <sup>th</sup> November Night
Anesthesia 30 <sup>th</sup> December Morning
OBG 1 <sup>st</sup> December Morning
OBG 1 <sup>st</sup> December Afternoon
OBG 2 <sup>nd</sup> December Night
Opthmology November 2022
Dentistry November 2022



- ✓ Now you can join our Online classes for MD/MS & Fcps Preparation
- ✓ Complete course in 2months including Past paper discussion
- ✓ Join from anywhere using mobile/laptop using internet
- ✓ 100% feasible with job and 100% time adjustment for students
- ✓ [www.fcpsworld.com](http://www.fcpsworld.com) or Contact 03129684658
- ✓ Hostel Facility is also available (for those who want to join physical classes)



For Complete List of Papers Visit our website <https://fcpsworld.com/fcps-pastpapers>

**Join Last Min Revision Live interactive session starting from 4<sup>th</sup> of February 2022 and clear exam in 1st Attempt in just 1200rs**

Register at [www.fcpsworld.com/register](http://www.fcpsworld.com/register) (8 day Session all systems)

**Surgery & Allied 30<sup>th</sup> November Afternoon [www.fcpsworld.com](http://www.fcpsworld.com)**

- regarding ulnar nerve-----> its lies medial to brachial artery in upper arm
- Sign of irreversible cell injury in cardiac cell-----> contraction bands in cytoplasm
- A tall young man had aortic root dilation upto 4cm, ocular examination showed lens dislocation, mitral valve leaflet defect with a systolic click what is diagnose-----> marfan syndrome
- Join FcpsWorld Online Classes & Clear Exam in 1<sup>st</sup> Attempt
- At li level on ct scan shows structure-----> sma origin from aorta
- Vascular part of fibula is use for bone graft-----> middle
- Brca gene related to breast cancer these genes present in place-----> nucleus
- Injury to medial border of scapula muscle will be spared-----> infra spinatus
- Regarding vitamin e true is-----> antioxidant
- Right bundle branch of conducting system of the heart is present in-----> septomarginal trabeculae
- Join FcpsWorld Online Classes & Clear Exam in 1<sup>st</sup> Attempt
- In the aortic opening if diaphragm is constricted structure will be compressed along with aorta-----> thoracic duct and azygous vein
- Pregnant lady presented with burning micturition and fever diagnose is-----> uti
- Join FcpsWorld Online Classes & Clear Exam in 1<sup>st</sup> Attempt
- With granuloma and sulphur granules these are characteristics of-----> actinomyces
- Four lumbar arteries arise from -----> aorta
- Patient had severe bums, he developed edema in the whole body, cause of swelling is-----> decrease albumin
- Join FcpsWorld Online Classes & Clear Exam in 1<sup>st</sup> Attempt



- ✓ Now you can join our Online classes for MD/MS & Fcps Preparation
- ✓ Complete course in 2months including Past paper discussion
- ✓ Join from anywhere using mobile/laptop using internet
- ✓ 100% feasible with job and 100% time adjustment for students
- ✓ [www.fcpsworld.com](http://www.fcpsworld.com) or Contact 03129684658
- ✓ Hostel Facility is also available (for those who want to join physical classes)



For Complete List of Papers Visit our website <https://fcpsworld.com/fcps-pastpapers>

- Regarding preferential thorough fare channel correct statement is-----> having smooth muscles
- Presented with glans laceration and rash skin is fixed organism is responsible-----> hpv
- Thalessemia major charateristic feature-----> ineffective erythropoiesis
- Undergoing thyroidectomy at upper lobe the nerve likely to be injured in vicinity of superior thyroid artery-----> external laryngeal nerve
- Blood is warm at 37 'c for massive transfusion to cause-----> l.r shift
- Is produced by carcinoid tumor-----> serotonin
- Join FcpsWorld Online Classes & Clear Exam in 1<sup>st</sup> Attempt
- Road traffic accident bp 89/50, slow pulse. The most important step of management includes-----> volume replacement
- Mitochondria are abundant in the apical end of -----> ciliated cells
- Physiological shunt will be present when v/q is-----> zero
- Patient dies suddenly on autopsy mitral valve is myxodematous with chordae tendinae broken cause of death is related to -----> mitral valve prolapse
- Join FcpsWorld Online Classes & Clear Exam in 1<sup>st</sup> Attempt
- Lens metabolism require -----> glucose
- Farmer presented with chest pain and right sided calciscation cause is-----> aspergillosis
- Multiple drug allergies now he has been given xylocain what will occur now-----> mild syncope
- Patient having complain of urgency and dysuria and raised psa and dx as prostate carcinoma it involves lobe most commonly-----> posterior
- Join FcpsWorld Online Classes & Clear Exam in 1<sup>st</sup> Attempt
- Norepinephrine is released by-----> postganglionic sympathetic nerve fibers
- Femoral hernia sac descend behind structure-----> inguinal ligament
- After 10-15 years skin ionizing radiation cause damage to cell by -----> free radicals
- Join FcpsWorld Online Classes & Clear Exam in 1<sup>st</sup> Attempt



- ✓ Now you can join our Online classes for MD/MS & Fcps Preparation
- ✓ Complete course in 2months including Past paper discussion
- ✓ Join from anywhere using mobile/laptop using internet
- ✓ 100% feasible with job and 100% time adjustment for students
- ✓ [www.fcpsworld.com](http://www.fcpsworld.com) or Contact 03129684658
- ✓ Hostel Facility is also available (for those who want to join physical classes)



For Complete List of Papers Visit our website <https://fcpsworld.com/fcps-pastpapers>

- What is most common cause of uti-----> e coli
- The most commonest organism for hospital acquired infection is-----> staph aureus
- Plantaris is supplied by nerve-----> tibial nerve
- Sternal angle (angle of Louis) at vertebral level-----> T4.5
- Join FcpsWorld Online Classes & Clear Exam in 1<sup>st</sup> Attempt
- Patient is undergoing some surgery of spleen surgeon has to take care of costo diaphragmatic recess what is the level of costo diaphragmatic recess-----> T10 ICS midaxillary line
- According to Frank-Starling law increase output is proportional to-----> change in length of ventricle muscle fiber (myofibril)
- Difficulty in dorsiflexion and eversion of foot is caused by damage to nerve-----> common peroneal nerve
- Join FcpsWorld Online Classes & Clear Exam in 1<sup>st</sup> Attempt
- Highest no of alpha receptors are present in-----> neck of bladder and proximal urethra
- Rta, he does not know recent events but he remembers his school events where is the lesion-----> hippocampus
- Intrinsic gene changes, cell causing demise of own cells, with enzymes cysteine proteases, due intrinsic or extrinsic stimuli, cell death it is-----> apoptosis
- Mental foramen location related to mandible and mental nerve at the level of-----> 2nd lower premolar
- Join FcpsWorld Online Classes & Clear Exam in 1<sup>st</sup> Attempt
- After bacterial infection there is purulent discharge cells will be seen on microscopy-----> neutrophilic leukocytosis
- Unable to recognize faces (prosopagnosia) area injured is-----> parieto occipito temporal lobe
- Common cyanotic heart disease is-----> TOF
- Join FcpsWorld Online Classes & Clear Exam in 1<sup>st</sup> Attempt



- ✓ Now you can join our Online classes for MD/MS & Fcps Preparation
- ✓ Complete course in 2 months including Past paper discussion
- ✓ Join from anywhere using mobile/laptop using internet
- ✓ 100% feasible with job and 100% time adjustment for students
- ✓ [www.fcpsworld.com](http://www.fcpsworld.com) or Contact 03129684658
- ✓ Hostel Facility is also available (for those who want to join physical classes)



For Complete List of Papers Visit our website <https://fcpsworld.com/fcps-pastpapers>

- Regurgitation chest pain mid night partially relieved by elevation of bed head side frothy like liquid is coming from mouth what should doctor advised-----> decrease fatty diet
- Join FcpsWorld Online Classes & Clear Exam in 1<sup>st</sup> Attempt
- Artificial pacemaker placed in due to defect in conduction of -----> av node
- Surfactants deficiency result in -----> nrds
- Types of drugs will have maximum bioavailability-----> largely hydrophobic, yet soluble in water
- Positive female with hx many blood transfusions what will happen-----> hemochromatosis
- When temp of skin reaches 52 degree receptors are stimulated-----> nociceptors
- Bun/cr ratio greater than 20 cause will be-----> pre renal azotemia
- Directly control autonomic reflex system of body-----> hypothalamus
- Join FcpsWorld Online Classes & Clear Exam in 1<sup>st</sup> Attempt
- Risk factor for the development of malignant melanoma is-----> xeroderma pigmentosa
- Skin cancer most commonly associated with hiv is-----> kaposi sarcoma
- Hoarsness of voice due to damage of nerve-----> rln
- With severe headache vomiting and neck stiffness and raised icp on lumbar puncture there was blood stained csf diagnoses is-----> subarachnoid hemorrhage
- Naturally occurring anti thrombotic-----> heparin
- Join FcpsWorld Online Classes & Clear Exam in 1<sup>st</sup> Attempt
- Itching is carried by -----> c sbers
- Hx of high grade fever gram positive diplococci lancet shaped bacteria on gram staining found in his blood most probable cause will be-----> strep pneumoniae
- Join FcpsWorld Online Classes & Clear Exam in 1<sup>st</sup> Attempt
- In quite respiration the muscle increases the transverse and anteroposterior diameter of thorax is-----> external intercostal



- ✓ Now you can join our Online classes for MD/MS & Fcps Preparation
- ✓ Complete course in 2months including Past paper discussion
- ✓ Join from anywhere using mobile/laptop using internet
- ✓ 100% feasible with job and 100% time adjustment for students
- ✓ [www.fcpsworld.com](http://www.fcpsworld.com) or Contact 03129684658
- ✓ Hostel Facility is also available (for those who want to join physical classes)



For Complete List of Papers Visit our website <https://fcpsworld.com/fcps-pastpapers>

- Female taking analgesics for back ache presented with gum bleeding epistaxis. She has fever 101 mild jaundice and hepatosplenomegaly. Hb 9 tlc 7000 neutropenia thrombocytopenia. On smear immature cells. Dx-----> drug induced anemia
- Tabes dorsalis causes -----> atonic bladder
  - Join FcpsWorld Online Classes & Clear Exam in 1<sup>st</sup> Attempt
- Patient given antibiotic for 2 months now patient has fever and git symptoms like loose stool other examination finding is whitish membrane diagnose is-----> pseudomembranous colitis
- Female after abdominal surgery and gynaecological procedures developed sepsis organism responsible is-----> bacteroides fragilis
- Artery present at the base of pyramids-----> arcuate
  - Join FcpsWorld Online Classes & Clear Exam in 1<sup>st</sup> Attempt
- G3p2 with 2 normal kids and mother is having some chromosomeal abnormality physical exam unremarkable-----> robertsonian translocation
- Cysticercosis caused by -----> ingestion of ova of tenia solium
- Superficial external pudendal artery emerge from-----> saphenous opening
- Factor has antiapoptotic activity is-----> bcl2
- 2ndday of life breast feeding baby present with jaundice indirect bilirubin 8.5 mg/dl, total bilirubin is 9 mg/dl, what is dx-----> physiological jaundice
  - Join FcpsWorld Online Classes & Clear Exam in 1<sup>st</sup> Attempt
- Rta, you are advised to make histology slide containing muscle fasciculus surrounded by connective tissue and the layer is termed as-----> perimysium
- Patient having difficulty in writing and reading language comprehension, area damage is-----> hippocampus
- Carcinoma of head of pancreases will compress structure-----> cbd
- Structures is similar in size in adult and a child-----> inner ear
  - Join FcpsWorld Online Classes & Clear Exam in 1<sup>st</sup> Attempt
- Ketamine is used as anesthetic repeated dressing of bum because-----> has profound analgesia



- ✓ Now you can join our Online classes for MD/MS & Fcps Preparation
- ✓ Complete course in 2months including Past paper discussion
- ✓ Join from anywhere using mobile/laptop using internet
- ✓ 100% feasible with job and 100% time adjustment for students
- ✓ [www.fcpsworld.com](http://www.fcpsworld.com) or Contact 03129684658
- ✓ Hostel Facility is also available (for those who want to join physical classes)



For Complete List of Papers Visit our website <https://fcpsworld.com/fcps-pastpapers>

- Rapid spread of electrical potential through cardiac myocytes occurs due to-----> gap junction
- Major source of urea in body is -----> ammonia within body
- Chenodeoxycholic used to-----> dissolve uncalcified cholesterol stone
- Deep plantar artery is branch of-----> dorsalis pedis
- Popliteal fossa lymph node involved in infection primary site infected will be-----> lateral dorsal surface of foot
- Join FcpsWorld Online Classes & Clear Exam in 1<sup>st</sup> Attempt
- Occurs due to sympathetic stimulation-----> bronchodilator
- Fat rich meal, its absorption and digestion increase due-----> cholecystokinin
- After taking antibiotic for some time patient has raised pt and aPTT what should be treatment-----> ineffective erythropoiesis
- In child cause of rheumatic fever is-----> group A streptococcus
- Join FcpsWorld Online Classes & Clear Exam in 1<sup>st</sup> Attempt
- Visible peristalsis and audible sound on examination, the condition is-----> pyloric stenosis
- In quiet respiration muscle increase transverse and anteroposterior diameter of thorax is-----> external intercostal
- In lupus nephritis type of hypersensitivity reaction occurs-----> type 3
- Sublingual nitroglycerin absorbed immediately in-----> sublingual vein
- During normal systole, backward flow of blood of heart is seen as-----> aortic notch
- Join FcpsWorld Online Classes & Clear Exam in 1<sup>st</sup> Attempt
- Semiconscious condition with subclavian steal syndrome blood supply to artery is causing this condition-----> vertebral artery
- Is having difficulty in reading black board-----> axial myopia
- Lady having hematological disease, admitted for two weeks, developed dyspnea, many areas of infarction seen on x-ray after that developed pulmonary hypertension due to-----> recurrent previous pulmonary embolism
- Join FcpsWorld Online Classes & Clear Exam in 1<sup>st</sup> Attempt



- ✓ Now you can join our Online classes for MD/MS & Fcps Preparation
- ✓ Complete course in 2 months including Past paper discussion
- ✓ Join from anywhere using mobile/laptop using internet
- ✓ 100% feasible with job and 100% time adjustment for students
- ✓ [www.fcpsworld.com](http://www.fcpsworld.com) or Contact 03129684658
- ✓ Hostel Facility is also available (for those who want to join physical classes)





For Complete List of Papers Visit our website <https://fcpsworld.com/fcps-pastpapers>

- Most important thing in doctor . Patient relationship is-----> mutual trust
- Sma starts at level-----> recurrent laryngeal nerve
- Posterior branch at aortic bifurcation is -----> median sacral artery
- After finger cut in boy. Is initial mediator in inflammation-----> histamine
- During the thoracic surgical procedure the surgeon should care the structure while ligating the internal thoracic artery the structure likely is-----> ipsilateral phrenic nerve
- Join FcpsWorld Online Classes & Clear Exam in 1<sup>st</sup> Attempt
- Fetal brain development during intrauterine life caused by-----> t3
- What is important response of body in hypotensive shock-----> cns ischemic response
- Little finger defect on exam sensory loss of dorsum of the little finger and thumb due to injury nerve-----> radial
- Join FcpsWorld Online Classes & Clear Exam in 1<sup>st</sup> Attempt
- Patient with anesthesia lignocaine mixed with adrenaline is given for hernia sac repair after patient went into respiratory depression and shock this is due to-----> systemic toxic effect of drug
- Sympathetic cholinergic stimulation cause-----> vasodilation in skeletal muscle
- After appendectomy patient developed chronic wound abscess and draining sinus containing yellow granules the organism is-----> actinomyces
- Join FcpsWorld Online Classes & Clear Exam in 1<sup>st</sup> Attempt
- Fibrocartilage is present in-----> intervertebral disc
- In a study, 40% woman have received hrt and 20% have not received hrt, best way to represent such study is-----> pie chart
- Undergoing thyroidectomy at lower lobe develop hoarsness of voice nerve injured in vicinity of inferior thyroid artery ligation-----> recurrent laryngeal nerve
- Join FcpsWorld Online Classes & Clear Exam in 1<sup>st</sup> Attempt
- Anti d antibody is clinically important because-----> cause hemolytic disease



- ✓ Now you can join our Online classes for MD/MS & Fcps Preparation
- ✓ Complete course in 2months including Past paper discussion
- ✓ Join from anywhere using mobile/laptop using internet
- ✓ 100% feasible with job and 100% time adjustment for students
- ✓ [www.fcpsworld.com](http://www.fcpsworld.com) or Contact 03129684658
- ✓ Hostel Facility is also available (for those who want to join physical classes)



For Complete List of Papers Visit our website <https://fcpsworld.com/fcps-pastpapers>

- Artery with thick elastic fibers is-----> aorta
- Periarticular erosion are characteristics of disease-----> rheumatoid arthritis
- Patient has raised calcitonin, calcitonin is derived from -----> thyroid
- Join FcpsWorld Online Classes & Clear Exam in 1<sup>st</sup> Attempt
- Common site of clavicle fracture is-----> lateral 1/ and medial 2/3
- Child present with dysentery stool contains pus and rbcs in smear causative agent is-----> enterohemorrhagic e coli
- Microtia is due to defect in-----> 1st and 2 nd brachial arch
- Join FcpsWorld Online Classes & Clear Exam in 1<sup>st</sup> Attempt
- Pituitary adenoma. The growth of this tumor anteriorly will compress structure-----> optic nerve
- Case of ckd died and on autopsy found hyperplasia of glands-----> parathyroid
- Carcinogens cause carcinogenesis by-----> permanent change in dna
- Decrease conversion of 25 hydroxycholecalceferol into 1,25 dihydrocholecalcesrol is due to-----> crf
- Chronic pancreatitis was made in this condition types of necrosis is most characteristic-----> fat necrosis
- Join FcpsWorld Online Classes & Clear Exam in 1<sup>st</sup> Attempt
- Xenograft related to -----> from different species
- Tamoxifen used for breast cancer risk will be-----> endometrial hyperplasia
- Hx of urinary incontinence artery involved is-----> aca
- Is locally malignant tumor-----> basal cell carcinoma
- Join FcpsWorld Online Classes & Clear Exam in 1<sup>st</sup> Attempt
- Von will brand disease presented with bleeding due to factor 8 deficiency is treatment choice for this disease-----> cryoprecipitate
- A person loses 2l of sweat while working and drinks 2l pure water, what changes will occur-----> increase icf volume
- Join FcpsWorld Online Classes & Clear Exam in 1<sup>st</sup> Attempt
- Injection of plastic hydrocarbon was given this will work as initiator in process the initiator work as-----> memory produce



- ✓ Now you can join our Online classes for MD/MS & Fcps Preparation
- ✓ Complete course in 2months including Past paper discussion
- ✓ Join from anywhere using mobile/laptop using internet
- ✓ 100% feasible with job and 100% time adjustment for students
- ✓ [www.fcpsworld.com](http://www.fcpsworld.com) or Contact 03129684658
- ✓ Hostel Facility is also available (for those who want to join physical classes)



For Complete List of Papers Visit our website <https://fcpsworld.com/fcps-pastpapers>

- In rt medial epicondyle damage nerve will be lost-----> ulnar
- Damage at foramen rotundum-----> maxillary division of trigeminal
- Intrinsic factor is released by-----> parietal cell of stomach fundus
- Boy with brachial artery injury vessel contribute most for compensation---->> vein and venules
- Join FcpsWorld Online Classes & Clear Exam in 1<sup>st</sup> Attempt
- Method of face mask sterilization for prevention against organism is-----> ethylene oxide gas
- Lady presented to her physician with concern both her mother and sister died of metastatic breast cancer before 40 year age she is worried about herself gene is mutated-----> brca.1 mutation
- Max water absorption occurs in presence of adh is-----> pct
- Join FcpsWorld Online Classes & Clear Exam in 1<sup>st</sup> Attempt
- Is the largest antibody-----> igm
- Patient has excruciating right leg pain anteriolateral right leg chordotomy was performed tract was involved -----> left lateral spinothalamic tract
- Tract carries sensation of crude touch sensation-----> anterior spinothalamic tract
- Join FcpsWorld Online Classes & Clear Exam in 1<sup>st</sup> Attempt
- Total body water measured by -----> antipyrine
- Pancreatic injury secretion goes into -----> lesser sac
- In intrinsic damage, factor cause activation of coagulation-----> factor 12 (hagman factor)
- Most radiosensitive tumor is -----> seminoma
- Hypoglycemic effect of sulphonylurea is increased by-----> phenyl butazone
- Join FcpsWorld Online Classes & Clear Exam in 1<sup>st</sup> Attempt
- Having bacterial infection came with fever, pneumonia and bp 80/60mmhg and increase heart rate and cardiac output she goes into shock what is the mechanism of her shock-----> septic shock
- Leukemia he has to undergo bone marrow biopsy patient bone marrow is taken from -----> sternum
- Join FcpsWorld Online Classes & Clear Exam in 1<sup>st</sup> Attempt



- ✓ Now you can join our Online classes for MD/MS & Fcps Preparation
- ✓ Complete course in 2months including Past paper discussion
- ✓ Join from anywhere using mobile/laptop using internet
- ✓ 100% feasible with job and 100% time adjustment for students
- ✓ [www.fcpsworld.com](http://www.fcpsworld.com) or Contact 03129684658
- ✓ Hostel Facility is also available (for those who want to join physical classes)



For Complete List of Papers Visit our website <https://fcpsworld.com/fcps-pastpapers>

- With acute myocardial infarction this is shown on ecg shown by -----> st displacement
  - Join FcpsWorld Online Classes & Clear Exam in 1<sup>st</sup> Attempt
- 1 year old child presents to you with failure to thrive, progressive cyanosis, tachypnea and left ventricular hypertrophy, defects are you suspecting----- --> tof
- Present with hypercalcemia due to hyperparathyroidism drug can increase calcium level more-----> thiazides diuretic
- After 6 months of renal transplant, patient presents with sign of renal failure. His symptoms are resolved by giving immunosuppressive therapy. What is the likely cause-----> acute cellular rejection
- Acute moderate diffuse abdominal pain. He is alcoholic acute pancreatitis is suspected. The pair of lab test most valuable in establishing dx would be-----> serum amylase and lipase
- Loss of two points discrimination, fine touch and vibrations in the lower limbs. The region at brain affected would be-----> fasciculus gracilis
  - Join FcpsWorld Online Classes & Clear Exam in 1<sup>st</sup> Attempt
- Loss of sensation and paralysis of muscle at planter surface of foot nerve responsible-----> tibial
- Least likely reaction when b+ blood transfused with -----> whole blood ab+
- Male and female patient divided into groups then subgroup type of sampling it is-----> stratified random sampling
  - Join FcpsWorld Online Classes & Clear Exam in 1<sup>st</sup> Attempt
- With dm has glycosuria increase urinary frequency and thirst this is due to reason-----> decrease threshold for glucose absorption
- Gummatous necrosis is seen in -----> syphilis
- Sustained rta having blood for 6h anemia develop is-----> normocytic normochromic
  - Join FcpsWorld Online Classes & Clear Exam in 1<sup>st</sup> Attempt
- Organism is transmitted in blood transfusion-----> hep. B
- Characteristic of transudate-----> low cell count



- ✓ Now you can join our Online classes for MD/MS & Fcps Preparation
- ✓ Complete course in 2months including Past paper discussion
- ✓ Join from anywhere using mobile/laptop using internet
- ✓ 100% feasible with job and 100% time adjustment for students
- ✓ [www.fcpsworld.com](http://www.fcpsworld.com) or Contact 03129684658
- ✓ Hostel Facility is also available (for those who want to join physical classes)



For Complete List of Papers Visit our website <https://fcpsworld.com/fcps-pastpapers>

- Structure hooks around arch of aorta-----> left ln
- The end product of carbohydrate digestion is -----> glucose
- Type of change in metaplasia is-----> functional and morphological change
- Join FcpsWorld Online Classes & Clear Exam in 1<sup>st</sup> Attempt
- Is posterior relation of left lung hilum-----> vagus nerve
- Pt is use lor-----> jaundice
- Join FcpsWorld Online Classes & Clear Exam in 1<sup>st</sup> Attempt
- Part of esophagus at skeletal to smooth muscle transition occurs-----> middle 3rd
- Regarding esophagus true is-----> upper 1/3\* d has striated skeletal muscle
- Pregnant lady with labor pain for 2h and develop dyspnea and died within 15min of labour cause is-----> amniotic fluid embolism
- Fascia transversalis contributes formation of structure -----> deep inguinal ring
- Mother milk has more nutrient vs cow milk-----> lactose
- Join FcpsWorld Online Classes & Clear Exam in 1<sup>st</sup> Attempt
- Present with hx of trauma on examination he can't raise left arm above shoulder structure is damage-----> accessory nerve
- In sub mandibular triangle structure along with lingual nerve-----> facial nerve
- Was on some antibiotic developed bleeding after some time increased pt what should be given to reduce bleeding-----> ffp
- Join FcpsWorld Online Classes & Clear Exam in 1<sup>st</sup> Attempt
- Patient after rta having sacral region of spinal cord damage has effect-----> autonomous bladder
- Lady died due to heart attack on autopsy lipofuscin found near to nucleate inside myocardial fiber-----> autophagocytosis
- Foramen cecum derivative-----> thyroid
- On labs there was 1+ blood and 3+ proteins in urine. What is the pattern of inheritance-----> autosomal recessive



- ✓ Now you can join our Online classes for MD/MS & Fcps Preparation
- ✓ Complete course in 2 months including Past paper discussion
- ✓ Join from anywhere using mobile/laptop using internet
- ✓ 100% feasible with job and 100% time adjustment for students
- ✓ [www.fcpsworld.com](http://www.fcpsworld.com) or Contact 03129684658
- ✓ Hostel Facility is also available (for those who want to join physical classes)



For Complete List of Papers Visit our website <https://fcpsworld.com/fcps-pastpapers>

- Most common cause of subacute bacterial endocarditis is-----> s.viridians
- Decrease gastric secretion-----> somatostatin
- Join FcpsWorld Online Classes & Clear Exam in 1<sup>st</sup> Attempt
- Most common cause of inherited intellectual disability-----> fragile x syndrome
- Man present emergency with fracture of shaft of femur cast is applied after few months later when cast removed gastrocnemius muscle size reduced due to-----> decrease actin and myosin protein synthesis
- Spore forming bacteria-----> clostridium tetani
- Sympathetic nerve block to urinary bladder will cause -----> pain and filling sensation loss
- Join FcpsWorld Online Classes & Clear Exam in 1<sup>st</sup> Attempt
- Cancer is treatable having good prognosis for recovery at its initial stage-----> gastric adenocarcinoma
- After trauma lesser trochanter avulsion leads to injury of-----> psoas muscle
- Most common site of thyroglossal cyst-----> midline
- Malaria with shortest preerythrocytic phase-----> falciparum
- Pregnant women having 4 child now lethargic and having microcytic hypochromic anemia diagnose is-----> ida
- Join FcpsWorld Online Classes & Clear Exam in 1<sup>st</sup> Attempt
- After a normal delivery in primigravida the alive & healthy new born is given feed-----> after half hour
- Minimum absorption of drug from its site of absorption for its desirable effect occurs if-----> if used for local action
- Ulnar nerve injured at elbow result in-----> ring and little finger claw deformity
- Join FcpsWorld Online Classes & Clear Exam in 1<sup>st</sup> Attempt
- Tremor with gene amplification -----> neuroblastoma
- Type of change in metaplasia is-----> epithelial change
- Injury to humerus surgical neck of humerus damage nerve involved-----> axillary



- ✓ Now you can join our Online classes for MD/MS & Fcps Preparation
- ✓ Complete course in 2 months including Past paper discussion
- ✓ Join from anywhere using mobile/laptop using internet
- ✓ 100% feasible with job and 100% time adjustment for students
- ✓ [www.fcpsworld.com](http://www.fcpsworld.com) or Contact 03129684658
- ✓ Hostel Facility is also available (for those who want to join physical classes)



For Complete List of Papers Visit our website <https://fcpsworld.com/fcps-pastpapers>

- Vitamin a deficiency result in-----> abnormal epithelial growth
- Most common site of berry aneurysm-----> cerebral arteries
- Join FcpsWorld Online Classes & Clear Exam in 1<sup>st</sup> Attempt
- In bum patient the excitability of cell is reduced with decrease action potential slope due to-----> hyponatremia
- Ataxia on both closing eyes and open eyes, patient sway with open eyes and eyes closed lesion in-----> cerebellum
- Right bundle branch supplied by artery-----> lca
- Blood supply of the upper 1/3 of the esophagus is -----> inferior thyroid artery
- Join FcpsWorld Online Classes & Clear Exam in 1<sup>st</sup> Attempt
- Lady presented with bleeding having increase bt and aptt and dx as vwd factor 8 is not available can be given as alternative therapy-----> cryoprecipitate

▪ **Almost every student who joins our Online Classes Passes exam (Alhamduillah)**

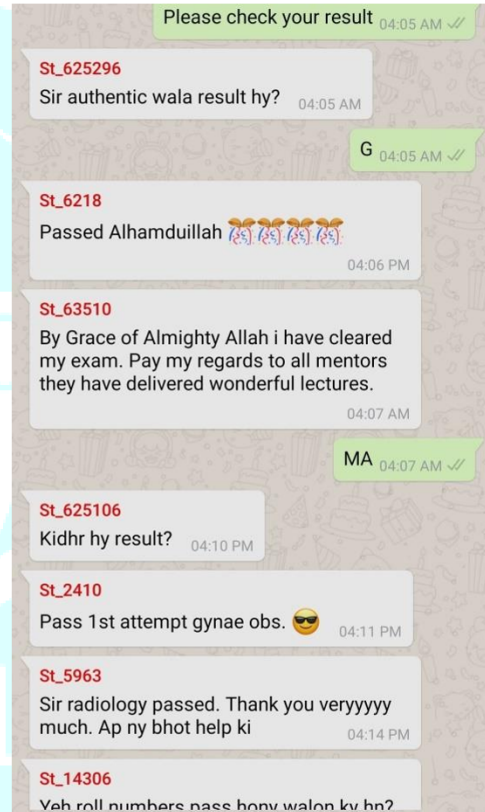
- Join FCPSWORLD Online Classes and clear your 100% concepts. Our lectures presententions are extract of past papers and consist on FirstAid, BRS, snell anatomy, kaplan neuroanatomy etc.



- ✓ Now you can join our Online classes for MD/MS & Fcps Preparation
- ✓ Complete course in 2months including Past paper discussion
- ✓ Join from anywhere using mobile/laptop using internet
- ✓ 100% feasible with job and 100% time adjustment for students
- ✓ [www.fcpsworld.com](http://www.fcpsworld.com) or Contact 03129684658
- ✓ Hostel Facility is also available (for those who want to join physical classes)



For Complete List of Papers Visit our website <https://fcpsworld.com/fcps-pastpapers>



## & Many More Success Stories



- ✓ Now you can join our Online classes for MD/MS & Fcps Preparation
- ✓ Complete course in 2months including Past paper discussion
- ✓ Join from anywhere using mobile/laptop using internet
- ✓ 100% feasible with job and 100% time adjustment for students
- ✓ [www.fcpsworld.com](http://www.fcpsworld.com) or Contact 03129684658
- ✓ Hostel Facility is also available (for those who want to join physical classes)



Www.Fcpsworld.com (Institute for Fcps & Md/Ms)

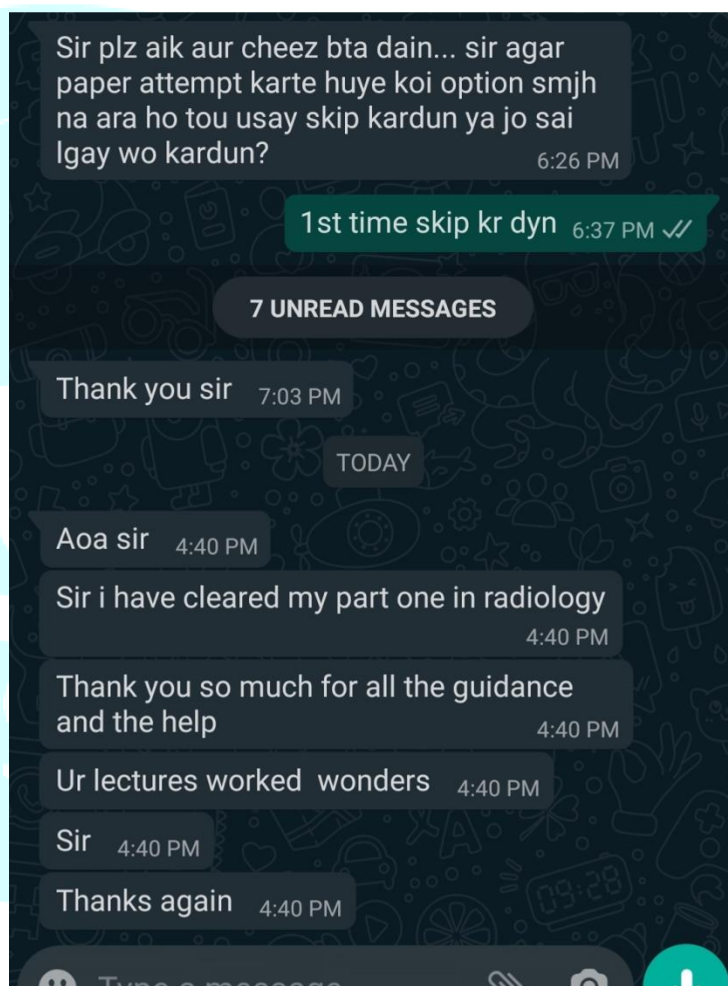
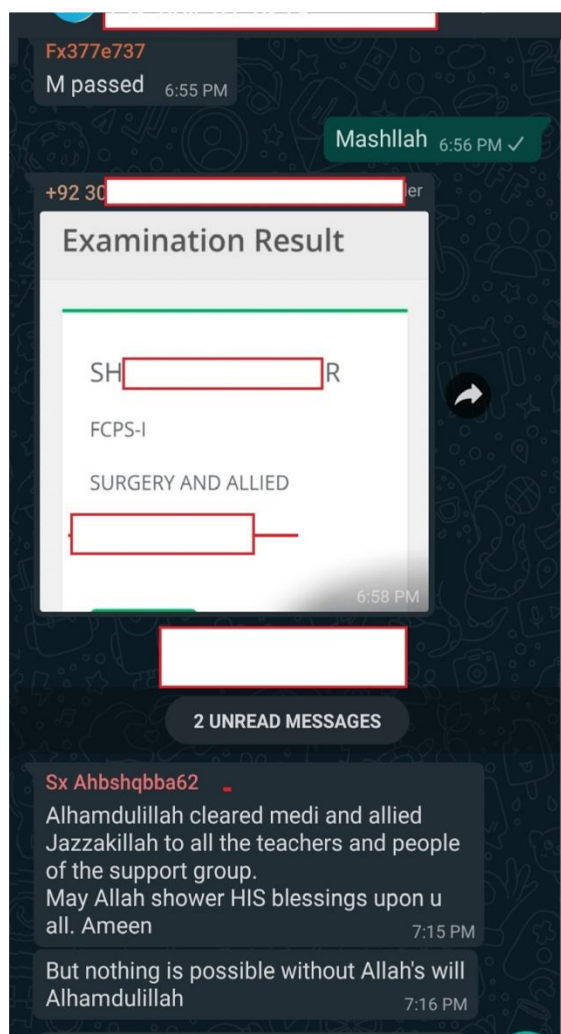
[www.facebook.com/FcpsWorld](http://www.facebook.com/FcpsWorld)

[www.facebook.com/GynaeObsWorld](http://www.facebook.com/GynaeObsWorld)

[www.facebook.com/Ophtworld](http://www.facebook.com/Ophtworld)



For Complete List of Papers Visit our website <https://fcpsworld.com/fcps-pastpapers>



## & Many More Success Stories



- ✓ Now you can join our Online classes for MD/MS & Fcps Preparation
- ✓ Complete course in 2months including Past paper discussion
- ✓ Join from anywhere using mobile/laptop using internet
- ✓ 100% feasible with job and 100% time adjustment for students
- ✓ [www.fcpsworld.com](http://www.fcpsworld.com) or Contact 03129684658
- ✓ Hostel Facility is also available (for those who want to join physical classes)

Www.Fcpsworld.com (Institute for Fcps & Md/Ms)

[www.facebook.com/FcpsWorld](http://www.facebook.com/FcpsWorld)

[www.facebook.com/GynaeObsWorld](http://www.facebook.com/GynaeObsWorld)

[www.facebook.com/Ophtworld](http://www.facebook.com/Ophtworld)



For Complete List of Papers Visit our website <https://fcpsworld.com/fcps-pastpapers>



FCPS-1 FEBRUARY 2022

## REVISION COURSE

GOLDEN POINTS

PASTPAPERS 2009-2021

HIGH YIELD CONCEPTS

Online Interactive Classes

REGISTER NOW!

20\* SEATS ONLY



FEE RS 1200 ONLY

[WWW.FCPSWORLD.COM/REGISTER](http://WWW.FCPSWORLD.COM/REGISTER)

SURGERY & ALLIED | MEDICINE & ALLIED  
| GYNAE OBS | ENT | PATHOLOGY | RADIOLOGY  
| OPTH | ANESTHESIA | DENTISTRY | PSY |

CALL US NOW  
+92 312 9684658



- ✓ Now you can join our Online classes for MD/MS & Fcps Preparation
- ✓ Complete course in 2 months including Past paper discussion
- ✓ Join from anywhere using mobile/laptop using internet
- ✓ 100% feasible with job and 100% time adjustment for students
- ✓ [www.fcpsworld.com](http://www.fcpsworld.com) or Contact 03129684658
- ✓ Hostel Facility is also available (for those who want to join physical classes)

Www.Fcpsworld.com (Institute for Fcps & Md/Ms)

[www.facebook.com/FcpsWorld](http://www.facebook.com/FcpsWorld)

[www.facebook.com/GynaeObsWorld](http://www.facebook.com/GynaeObsWorld)

[www.facebook.com/Ophworld](http://www.facebook.com/Ophworld)



For Complete List of Papers Visit our website <https://fcpsworld.com/fcps-pastpapers>

# FCPS-1 ONLINE COURSE

Join FcpsWorld Online preparation courses and clear exam in 1st Attempt.

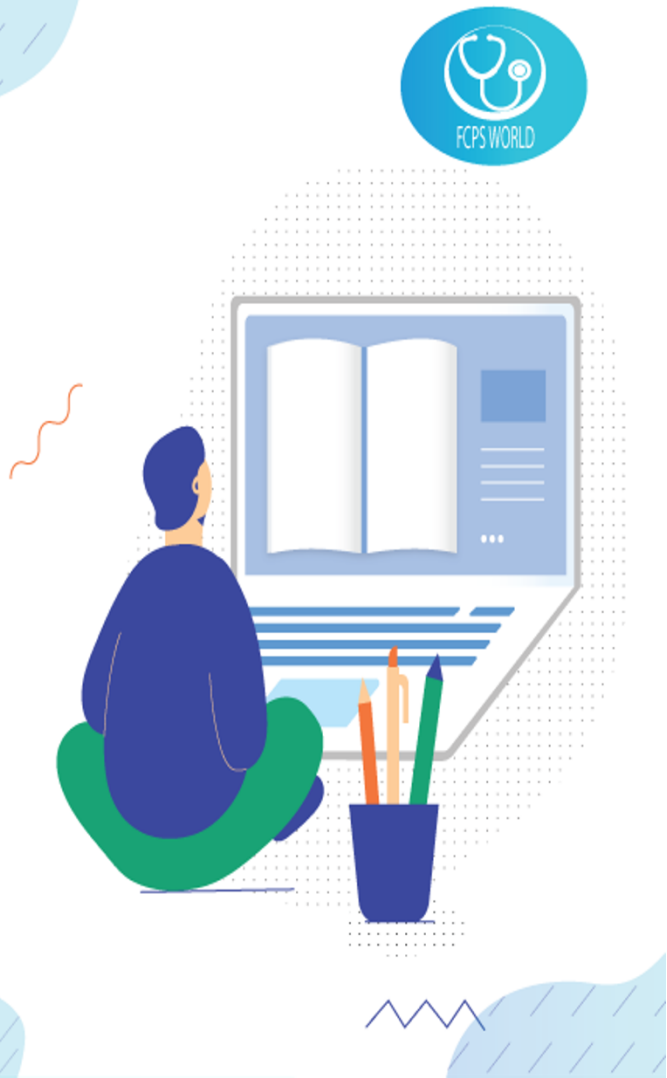
[WWW.FCPSWORLD.COM](http://WWW.FCPSWORLD.COM)



Fcpsworld



[www.fcpsworld.com](http://www.fcpsworld.com)



**BUY 3<sup>rd</sup> edition ONLY**



- ✓ Now you can join our Online classes for MD/MS & Fcps Preparation
- ✓ Complete course in 2months including Past paper discussion
- ✓ Join from anywhere using mobile/laptop using internet
- ✓ 100% feasible with job and 100% time adjustment for students
- ✓ [www.fcpsworld.com](http://www.fcpsworld.com) or Contact 03129684658
- ✓ Hostel Facility is also available (for those who want to join physical classes)

Www.Fcpsworld.com (Institute for Fcps & Md/Ms)

[www.facebook.com/FcpsWorld](https://www.facebook.com/FcpsWorld)

[www.facebook.com/GynaeObsWorld](https://www.facebook.com/GynaeObsWorld)

[www.facebook.com/Ophtworld](https://www.facebook.com/Ophtworld)



For Complete List of Papers Visit our website <https://fcpsworld.com/fcps-pastpapers>

## GoldStandard FCPS (Buy 3<sup>rd</sup> edition only)

- ✓ November 2022 papers (recent updated)
- ✓ Revise 11 years pastpapers in just 11 days

✓ Authentic most repeated papers.

✓ Subject wise topic wise MCQS

✓ 1 liner for rapid revision. (Cram them)

✓ Clear FCPS-1 in 1st Attempt (Dont miss chance)

✓ Free Cash on Delivery Order at

[www.fcpsworld.com/order-book](https://www.fcpsworld.com/order-book)



- ✓ Now you can join our Online classes for MD/MS & Fcps Preparation
- ✓ Complete course in 2months including Past paper discussion
- ✓ Join from anywhere using mobile/laptop using internet
- ✓ 100% feasible with job and 100% time adjustment for students
- ✓ [www.fcpsworld.com](https://www.fcpsworld.com) or Contact 03129684658
- ✓ Hostel Facility is also available (for those who want to join physical classes)



For Complete List of Papers Visit our website <https://fcpsworld.com/fcps-pastpapers>

GoldStandard FCPS 4<sup>th</sup> Edition V1 (Golden 13)

## Table of Content

1. CVS SYSTEM	Page#5
2. ENDOCRINE SYSTEM	Page#33
3. RENAL SYSTEM	Page#69
4. RESPIRATORY SYSTEM	Page#89
5. GIT SYSTEM	Page#113
6. Hematology	Page#145
7.	
8. ANATOMY	
a. UPPER LIMB	Page#169
b. LOWER LIMB	Page#200
c. THORAX	Page#225
d. NEUROANATOMY	Page#233
e. HEAD AND NECK	Page#270
f. ABDOMEN PELVIS	Page#281
g. Histology	Page#292
h. General Anatomy	Page#294
9. PHARMACOLOGY	Page#298
10. MICROBIOLOGY	
a. Bacteriology	Page#301
b. Virology	Page#309
c. Fungi	Page#3011

### NOTE:

1. MCQs should be covered in retrograde fashion
2. All students who have ordered book will receive November papers in PDF as well via whatsapp (Do them first)
3. All written In **tabular** form or in **points** form are pastpapers
4. Each and every word from this book is from pastpapers (Except UPPER/LOWER LIMBS that has bit of explanation)
5. Students are highly advised to take Last Minute revision course starting in last 10 days of EXAMS (All points and systems will be covered 3 hr class daily)  
Register: [www.fcpsworld.com/register](http://www.fcpsworld.com/register)

**If you have less time first do PDF files sent by us, then open each topic just CRAM TABULAR PASTPAPERS, then open each system and cram MISC 2019-2021 papers of all systems after completing those start MISC 2009-2021 of from system one.**



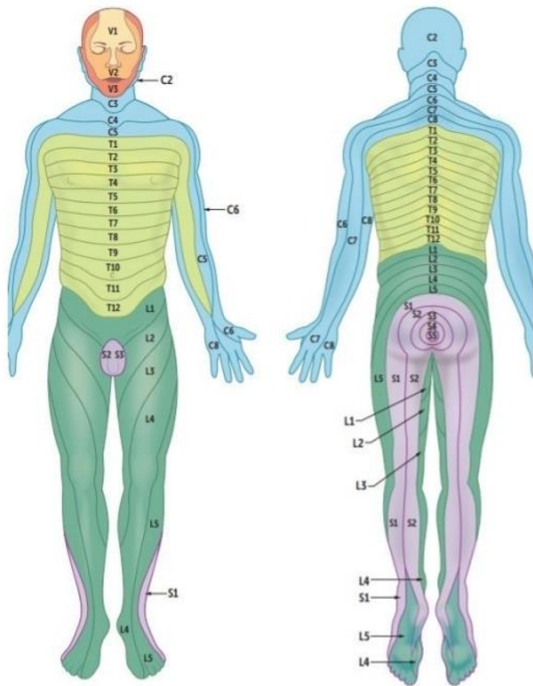


For Complete List of Papers Visit our website <https://fcpsworld.com/fcps-pastpapers>

GoldStandard FCPS 4<sup>th</sup> Edition V1 (Golden 13)

- Superficial fascia of the scalp is mixture of → Loose areolar and adipose tissue
- The axillary sheath is a continuation of → Prevertebral fascia
- Thyroid gland moves with swallowing because it is enclosed in → Pretracheal fascia
- Trauma to one kidney without the perforation of Gerota fascia, the blood goes to → Inferiorly to the pelvis
- True regarding the posterior triangle of neck is → Roof formed by investing layer of deep cervical fascia

**DERMATOMES**



C2	Posterior half of skull
C3	High turtleneck shirt Diaphragm and gallbladder pain referred to the right shoulder via phrenic nerve ✓ C3, 4, 5 keeps the diaphragm alive
C4	Low-collar shirt
C6	Includes thumbs ✓ Thumbs up sign on left hand looks like
T4	✓ At the nipple ✓ T4 at the teat pore
T7	✓ At the xiphoid process 7 letters in xiphoid
T10	✓ At the umbilicus (belly button) Point of referred pain in early appendicitis
L1	✓ At the Inguinal Ligament
L4	✓ Includes the kneecaps Down on ALL 4's
S2, S3, S4	✓ Sensation of penile and anal zones S2, 3, 4 keep the penis off the floor

GREAT TOE	L4
LITTLE TOE	S1
KNEE	L4
NIPPLE	T4
UMBILICUS	T10
RING AND LITTLE FINGER	C8 RING, T1 LITTLE
THUMB	C6

anal area dermatome	s3-4
dermatome of lateral wrist	c6
dermatomy of thumb	c6

Join FcpsWorld Online Classes and Clear exam in 1<sup>st</sup> Attempt

GoldStandard FCPS 4<sup>th</sup> Edition V1 (Golden 13)

knee dermatome	l4
lower end of clavicle dermatome	c3-4
pain in calf and medial malleolus dermatome	l4

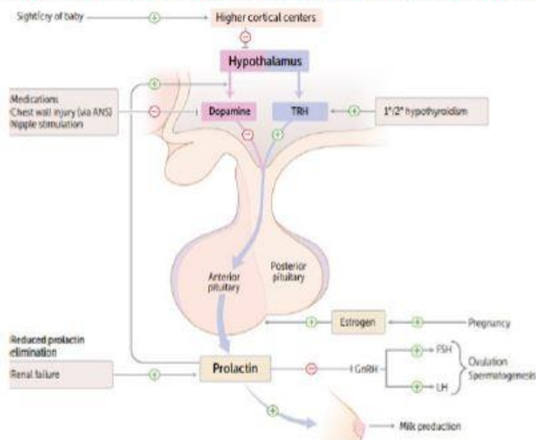




For Complete List of Papers Visit our website <https://fcpsworld.com/fcps-pastpapers>

**Prolectin**

1. Stimulates milk production in breast; inhibits ovulation in females and spermatogenesis in males by inhibiting **GnRH** synthesis and release (thus **LH, FSH release**).
  - Hypothalamus -> Decr GnRH secretion -> Decr FSH/LH -> Decr estradiol in females, Decr testosterone in males
  - Alveolar Cells of Breast Ducts -> Milk production and release -> Lactation
  - Prolectin release dopamine which inhibits prolectin
2. Release by sucking, voice of baby
3. Prolectin secretion from anterior pituitary is tonically inhibited by **dopamine** Prolectin.



**PAST PAPERS**

Potent stimulus for prolactin release is?	Suckling reflex of baby
A 9-month pregnant presents with complaints of lactation (milky discharge). This is likely due to	Prolactin
Secretion of milk in mammary gland is due to	Prolactin
During lactation, ovulation is inhibited because of inhibition of GnRH by?	Prolactin
hormone of the anterior pituitary is under direct inhibitory control of hypothalamus?	Prolactin
During lactation, ovulation is inhibited because of inhibition of GnRH hv?	Prolactin



- ✓ Now you can join our Online classes for MD/MS & Fcps Preparation
- ✓ Complete course in 2months including Past paper discussion
- ✓ Join from anywhere using mobile/laptop using internet
- ✓ 100% feasible with job and 100% time adjustment for students
- ✓ [www.fcpsworld.com](http://www.fcpsworld.com) or Contact 03129684658
- ✓ Hostel Facility is also available (for those who want to join physical classes)



For Complete List of Papers Visit our website <https://fcpsworld.com/fcps-pastpapers>

GoldStandard FCPS 4<sup>th</sup> Edition V1 (Golden 13)

## ENDOCARDITIS

- Nonbacterial endocarditis is seen in → Neoplasms, hypercuaquable state
- Most common cause of death in rheumatic fever → Myocarditis
- Commonly use Tri-cuspaed valvue
- common in IV-drug users
- Libman-Sack Endocarditis occurs in → SLE
- DOC is benzethins pencilline if allergic give genta+vanco
- Correct infective endocarditis sequence  
Damage valve, Thrombus, Bacteremia, Perforation (VT-BP)

**Bacterial endocarditis** Acute—*S aureus* (high virulence). Large vegetations on previously normal valves. Rapid onset.  
Subacute—viridans streptococci (low virulence). Smaller vegetations on congenitally abnormal or diseased valves. Sequela of dental procedures. Gradual onset.

Tricuspid valve endocarditis is associated with IV drug use (don't "tri" drugs). Associated with *S aureus*, *Pseudomonas*, and *Candida*.  
*S bovis (gallolyticus)* is present in colon cancer, *S epidermidis* on prosthetic valves.

## PAST PAPERS

Non thrombotic bacterial endocarditis is frequently associated with?	Terminal neoplasm
A known case of rheumatic mitrai stenosis developed fever, lassitude body ache after tooth extraction. O/E splinter haemorrhages and splenomegaly was noted Subacute endocarditis is suspected. Most likely organism on blood culture would be?	Strep viridans
Most common heart valve affected in diseases is	Tricuspid
Female pt. has valvular heart disease, such pt. are at risk of developing infective endocarditis, which organism is commonly responsible	streptococcus viridians
On Examination there are skin spots and nail bed hemorrhages on both hands & a Grade-4 Diastolic Murmur, past history is unremarkable. Patient is most likely suffering from	Infective Endocarditis
Developed fever, lassitude body ache after tooth extraction. Most likely organism on blood culture would be	Strep viridians
Infective endocarditis Patient is allergic to penicillin give medication	Vancomycin + gentamicin
School teacher who after death was diagnosed as a case of endocarditis and lymphocytic infiltration of cardiac tissues	Coxsackie virus



- ✓ Now you can join our Online classes for MD/MS & Fcps Preparation
- ✓ Complete course in 2months including Past paper discussion
- ✓ Join from anywhere using mobile/laptop using internet
- ✓ 100% feasible with job and 100% time adjustment for students
- ✓ [www.fcpsworld.com](http://www.fcpsworld.com) or Contact 03129684658
- ✓ Hostel Facility is also available (for those who want to join physical classes)





For Complete List of Papers Visit our website <https://fcpsworld.com/fcps-pastpapers>

GoldStandard FCPS 4<sup>th</sup> Edition V1 (Golden 13)

True about CSF	Slightly acidic than plasma
----------------	-----------------------------

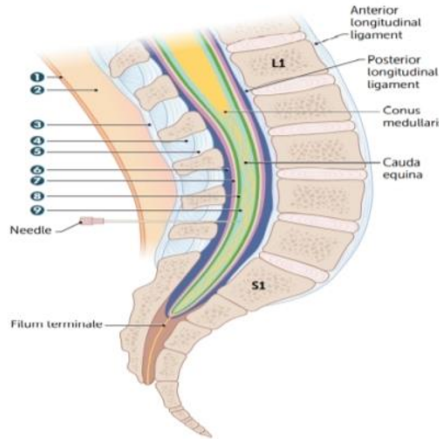
**LUMBER PUNCTURE**

In adults, spinal cord ends at lower border of L1–L2 vertebrae. Subarachnoid space (which contains the CSF) extends to lower border of S2 vertebra. Lumbar puncture is usually performed between L3–L4 or L4–L5 (level of cauda equina).

Goal of lumbar puncture is to obtain sample of CSF without damaging spinal cord. To **keep** the cord **alive**, keep the spinal needle between **L3 and L5**.

Needle passes through:

- 1 skin
- 2 fascia and fat
- 3 supraspinous ligament
- 4 interspinous ligament
- 5 ligamentum flavum
- 6 epidural space (epidural anaesthesia needle stops here)
- 7 dura mater
- 8 arachnoid mater
- 9 subarachnoid space (CSF collection occurs here)



Past papers

During LP after crossing flavum at L3, L4 the needle touches which structure first	Epidural space
Ideal site for lumbar puncture is	Below L4
Regarding Epidural space extension	Foramen magnum to S2
Site of Epidural anaesthesia for patient undergoing Vaginal hysterectomy is	Sacral hiatus
Spinal cord is suspended in dura by	Denticulate ligament
Structure most likely pierced by needle during lumbar puncture is	Ligamentum flavum
Which of the following structure is pierced in paramedian approach	Ligamentum flavum
The most common site of spinal anaesthesia is?	Subarachnoid
Subarachnoid space ends at the level of	S2-S3
Cauda equina:	Anterior & posterior roots of spinal cord from L1 to L5

Note:

Herniation between L4-L5 affect which spinal segment?	Lumbar
Between L4 and L5 disc herniation, which spinal nerve will be affected	L5
Herniation between L4-L5 affect which spinal segment	L4

**Centers of Brain**

- Vomiting centre located in → Medulla
- Cough centre is present in → medulla
- Respiratory centre located in → Medulla oblongata

Past papers



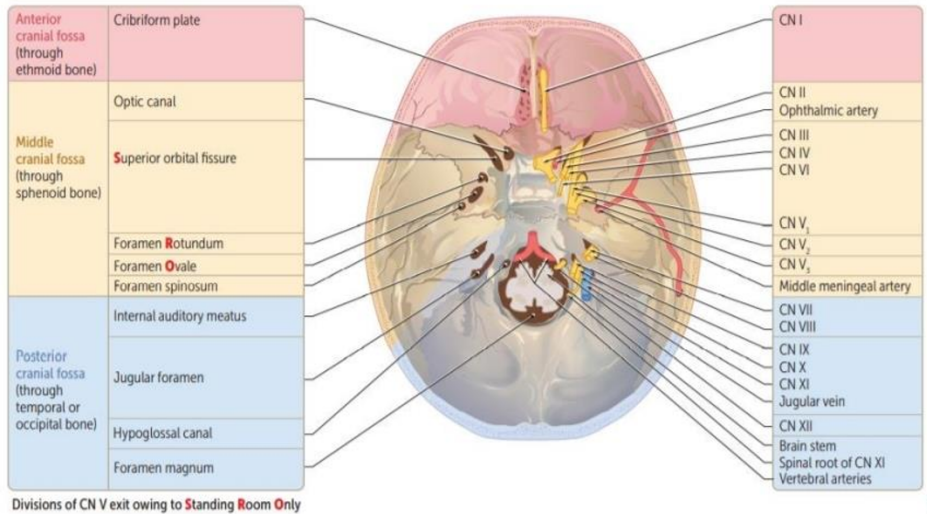


For Complete List of Papers Visit our website <https://fcpsworld.com/fcps-pastpapers>

GoldStandard FCPS 4<sup>th</sup> Edition V1 (Golden 13)

## HEAD AND NECK

### Foramin of Skull



Anterior cranial Fossa (ethmoid bone)	Cribriform plate	CN 1
Middle Cranial Fossa (sphenoid bone)	Optic Canal	CN2 Ophthalmic artery, central retinal vein
	Superior orbital fissure	CN2,4,6 CN 5-V1
	Foramen rotundum	CN5-V2 → maxillary branch of trigeminal nerve
	Foramen ovale	CN5-V3 → mandibular branch of trigeminal nerve
	Foramen spinosum	Middle meningeal artery
Posterior Cranial Fossa (temporal or occipital bone)	Internal auditory meatus	CN7, 8
	Jugular foramen	CN 9,10,11 Jugular vein
	Hypoglossal canal	CN12
	Foramen magnum	Brain stem
		Spinal root of CN 12 Vertebral arteries

Pastpapers

270/314

Accessory meningeal artery enters through which foremen----->Ovale
Accessory nerve passes through which foramen----->Jugular foramen
Foramen Rotundum damaged which structure will be severed----->Maxillary branch of trigeminal nerve.
Lesion below foramen Ovale causes paralysis of----->Lower part of face/Jaw
Mandibular branch of Trigeminal nerve passes through----->Foramen ovale
Middle meningeal artery in the----->Foramen Spinosum
Nerve in foramen Ovale damaged nerve supply of which part will be affected----->Lower face
Vagus nerve passes through----->jugular foramen





For Complete List of Papers Visit our website <https://fcpsworld.com/fcps-pastpapers>

**FSH & LH**

**LH**

**Luteinizing Hormone in males acts on = Leydig cells**

1. **Luteinizing** hormone acts on = **Leydig** cells to produce **Testosterone**
2. Function of LH before ovulation is=Convert most of the **granulosa** cells into **lutein** cells

Join FcpsWorld Online Classes and Clear exam in 1<sup>st</sup> Attempt

GoldStandard FCPS 4<sup>th</sup> Edition V1 (Golden 13

**FSH**

3. **FSH** acts on =**Sertoli** cells to do **Spermatogenesis** → Related to **Azoospermia**  
 [Light is Fast]

- Development of seminiferous tubules
- Convert testosterone into estradiol
- Helps in maturation of follicles
- Inhibited by **INHIBIN**

Spermatogenesis is stimulated by	FSH and testosterone
LH act through:	cAMP
Hormone causing increase release of testosterone:	Luteinizing hormone
LH act on which testicular cells mostly	Leydig cells

Function of sertoli cells	help in spermiogenesis
A tall man with normal external genitalia married but no kids. Semen analysis showed azospermia. Most likely cause may be in	Sertoli cell
Sertoli cells produce	MIF (Mullerian inhibitory factor)
Married man with azospermia. Investigation of choice is	Serum FSH + LH

Function and development of seminiferous tubule requires=FSH and androgen  
 Testosterone converted to estradiol by which hormone= FSH  
 Conversion of testosterone to 17-beta estradiol in granulosa cells occurs by the influence of= FSH

**Before Ovulation maturation of follicles occur by action of FSH**

Maturation of follicles

Hormone responsible is FSH mainly and LH partly.

**GnRH from hypothalamus release FSH and LH by pituitary**

Which hormone stimulates release of FSH and LH	GnRH
During lactation, amenorrhea occurs due to	Inhibition of GnRH

**The Sertoli cells also secrete inhibin Which stop FSH secretion**

- ✓ [www.fcpsworld.com](http://www.fcpsworld.com) or Contact 03129684658
- ✓ Hostel Facility is also available (for those who want to join physical classes)





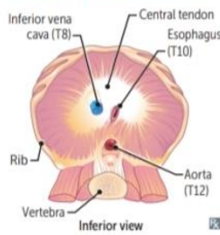
For Complete List of Papers Visit our website <https://fcpsworld.com/fcps-pastpapers>

GoldStandard FCPS 4<sup>th</sup> Edition V1 (Golk

# Thorax

## Diaphragm

### Diaphragm structures



Structures perforating diaphragm:

- At T8: IVC, right phrenic nerve
- At T10: esophagus, vagus (CN 10; 2 trunks)
- At T12: aorta (red), thoracic duct (white), azygos vein (blue) ("At T-1-2 it's the red, white, and blue")

Diaphragm is innervated by C3, 4, and 5 (phrenic nerve). Pain from diaphragm irritation (eg, air, blood, or pus in peritoneal cavity) can be referred to shoulder (C5) and trapezius ridge (C3, 4).

Number of letters = T level:

T8: vena cava (IVC)

T10: (O)esophagus

T12: aortic hiatus

I ate (8) ten eggs at twelve.

C3, 4, 5 keeps the diaphragm alive.

Other bifurcations:

- The Common Carotid bifurcates at C4.
- The Trachea bifurcates at T4.
- The abdominal aorta bifurcates at L4.

## ESOPHAGUS [All are pastpapers]

Oesophagus starts at level of:	Cricoid cartilage
Esophagus narrowest at:	Cricopharyngus
Esophagus constricted at:	Where crossed by arch of aorta

## Breast [All are pastpapers]

Regarding breast:	15-20 lactiferous ducts
In a female major breast duct terminate into terminal ducts from terminal ducts it forms:	Lactiferous sinus
Terminal duct in breast form:	Lobule
Breast lies on:	Pect major

## LYMPHATICS OF BREAST [All are pastpapers]

Pectoral group of axillary nodes drain:	Major part of the breast
Breast CA involving lateral part of breast drain by:	Ant pectoral group
Upper lateral quadrant of breast is drained by which grp of nodes:	Anterior axillary lymph node
Lymph drainage from nipple of breast is to:	Anterior axillary nodes
Inner medial lower quadrant of breast doesnt drain into	Inf phrenic
Lymph node of inner breast drains into all except:	Inf phrenic nodes
Breast Medial / Lower compartment does not:	Inferior phrenic lymph nodes
Medial quadrant of breast drain into?	Internal thoracic nodes
Pectrol lymph nodes drain maximum:	Major part of breast
Lateral side of breast drains into:	Pectoral lymph nodes
Lateral quadrants of breast drain into which nodes?	Pectoral nodes.
Lymphatic drainage from nipple of breast is:	Ant axillary lymph node
Breast outer quadrant:	Pectoral (anterior) group





For Complete List of Papers Visit our website <https://fcpsworld.com/fcps-pastpapers>

GoldStandard FCPS 4<sup>th</sup> Edition V1 (Golden 13)

**Graves Disease**

**Hyperthyroidism**

**Graves disease**



Most common cause of hyperthyroidism. Thyroid-stimulating immunoglobulin (IgG, can cause transient neonatal hyperthyroidism; type II hypersensitivity) stimulates TSH receptors on thyroid (hyperthyroidism, diffuse goiter), dermal fibroblasts (pretibial myxedema), and orbital fibroblasts (Graves orbitopathy). Activation of T-cells → lymphocytic infiltration of retroorbital space → ↑ cytokines (eg, TNF-α, IFN-γ) → ↑ fibroblast secretion of hydrophilic GAGs → ↑ osmotic muscle swelling, muscle inflammation, and adipocyte count → exophthalmos. Often presents during stress (eg, pregnancy). Associated with HLA-DR3 and HLA-B8.  
Histology: tall, crowded follicular epithelial cells; scalloped colloid.

**PAST PAPERS**

57/314

A pt with exophthalmos and other hyperthyroid features and positive anti-thyroid antibodies is suggestive of	Graves disease
Exophthalmus is due to:	Inc TSI
Most common cause of hyperthyroidism:	Graves disease
Hyperthyroid, goiter and exophthalmos:	Graves disease
common cause of hyperthyroidism?	Grave's disease
What will increase in graves disease	t3
Graves ophthalmopathy:	Optic nerve compression

Vitamin D deficiency is associated with Ophthalmopathy in patients with Graves' hyperthyroidism

Key lympho, antibody

**Hypothyroidism**

**Hashimoto thyroiditis**

Also called chronic autoimmune thyroiditis. Most common cause of hypothyroidism in iodine-sufficient regions. Associated with HLA-DR3, ↑ risk of primary thyroid lymphoma (typically diffuse large B-cell lymphoma).  
Findings: moderately enlarged, **nontender** thyroid. May be preceded by transient hyperthyroid state ("Hashitoxicosis") due to follicular rupture and thyroid hormone release.  
Serology: ⊕ antithyroid peroxidase (antimicrosomal) and antithyroglobulin antibodies.  
Histology: Hürthle cells, lymphoid aggregates with germinal centers.  
Postpartum thyroiditis—mild, self-limited variant of Hashimoto thyroiditis arising < 1 year after delivery.

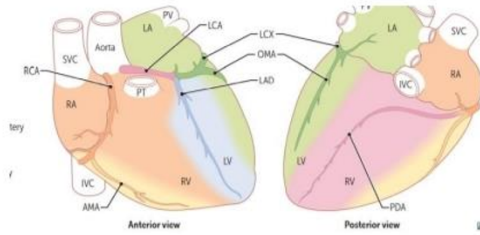
A 40-year known Hypothyroidism female was referred to endocrinologist for a mass in neck. FNAC shows increased lymphocytes and serology was adviseD.What is the most probable cause?	Hashimoto thyroiditis
Female with neck swelling hypothyroid dr orders some immunologic tests?	Hashimoto thyroiditis
Female swelling infront of neck. Hypothyroid Dr orders some immunological test. What is the diagnosis?	Hashimoto thyroiditis
Diagnosis for hashimotos	Antimicrosomal and anti-thyroglobulin

A 40-year known Hypothyroidism female was referred to endocrinologist for a mass in neck. FNAC shows increased lymphocytes and serology was advised. What is the most probable cause  
Hashimoto



**MI ECG LEADS**

INFARCT LOCATION	LEADS WITH ST-SEGMENT ELEVATIONS OR Q WAVES
Anteroseptal (LAD)	V <sub>1</sub> -V <sub>2</sub>
Anteroapical (distal LAD)	V <sub>3</sub> -V <sub>4</sub>
Anterolateral (LAD or LCX)	V <sub>5</sub> -V <sub>6</sub>
Lateral (LCX)	I, aVL
Inferior (RCA)	II, III, aVF
Posterior (PDA)	V <sub>7</sub> -V <sub>9</sub> , ST depression in V <sub>1</sub> -V <sub>3</sub> with tall R waves



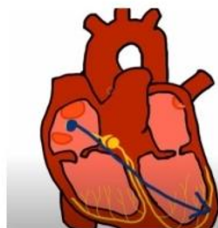
**PAST PAPERS**

Inferior wall MI occurs due to blockage of	Right coronary artery
Post 1/3 of interventricular septum is damaged due to MI. Artery involved is?	Right coronary artery
Inferior wall MI occurs due to blockage of which artery?	Right marginal
MI of posterolateral surface of heart. Vessel involved is	Left circumflex
ECG changes in lead V4 indicated involvement of which vessel	LAD
Infarction of apex of heart, vessel thrombosed will be	LAD
The circumflex artery supplies	Left atrium and left ventricle
Infarct in the lower segment of heart	LCX
ECG shows changes in leads II, III and avF. Diagnosis	Inferior wall MI
ST elevation in lead II, which artery involved	RCA

GoldStandard FCPS 4<sup>th</sup> Edition V1 (Golden 13)

Patient presented to ER with crushing chest pain for last 1 hour ON ECG there is ST segment elevation in lead II, III & AvF what's the diagnosis	Inferior wall MI
ST segment elevation in lead II which artery effected	right main coronary
A man presents to ER with ST depressions in II, III and avF and was advised angiography. The Most likely culprit artery is	RCA
Artery involved in inferior wall MI	Right marginal
Patient having ST elevation in Lead 2 and complete heart block vessel involved	RCA

NOTE: AXIS deviation



Left axis deviation on ECG is seen in	Rt ventricular myocardial damage
---------------------------------------	----------------------------------

- ✓ [www.fcpsworld.com](http://www.fcpsworld.com) or Contact 03129684658
- ✓ Hostel Facility is also available (for those who want to join physical classes)



Www.Fcpsworld.com (Institute for Fcps & Md/Ms)

[www.facebook.com/FcpsWorld](https://www.facebook.com/FcpsWorld)

[www.facebook.com/GynaeObsWorld](https://www.facebook.com/GynaeObsWorld)

[www.facebook.com/Ophtworld](https://www.facebook.com/Ophtworld)



For Complete List of Papers Visit our website <https://fcpsworld.com/fcps-pastpapers>



- ✓ Now you can join our Online classes for MD/MS & Fcps Preparation
- ✓ Complete course in 2months including Past paper discussion
- ✓ Join from anywhere using mobile/laptop using internet
- ✓ 100% feasible with job and 100% time adjustment for students
- ✓ [www.fcpsworld.com](http://www.fcpsworld.com) or Contact 03129684658
- ✓ Hostel Facility is also available (for those who want to join physical classes)