

Www.Fcpsworld.com (Institute for Fcps & Md/Ms)

GOLD STANDRD OF MD/MS & FCPSBuy All past papers GoldStandard FCPS order at: 03100220370

www.facebook.com/FcpsWorld

www.facebook.com/GynaeObsWorld

www.facebook.com/Ophtworld



www.FCPSWORLD.com

GoldStandard FCPS

Surgery & Allied

7th July 2020 Night

- ✓ Clear FCPS-1 in **FIRST ATTEMPT**
- ✓ Entire course will be completed in 2 months.
- ✓ Live lectures via video Portal
- ✓ Daily Test session (Test discussion will be on Via Portal)
- ✓ Follow our complete guideline for FCPS-1
- ✓ Get Hands on 20,000 CPSP question (most of them repeat)
- ✓ Free study material, whatsapp group (only for our students)
- ✓ Don't Miss the chance. (**LIMITED SEATS AVAILABLE.**)
- ✓ WWW.FCPSWORLD.com
- ✓ WWW.facebook.com/fcpsworld
- ✓ For Details Phone# 03129684658



- ✓ Now you can join us Online for MD/MS & Fcps Preparation
- ✓ Complete course in 2months including Past paper discussion
- ✓ Join from anywhere using mobile/laptop using internet
- ✓ 100% feasible with job and 100% time adjustment for students
- ✓ www.fcpsworld.com or Contact: 03129684658
- ✓ Hostel Facility is also available (for those who want to join physical classes)



(Errors and omissions excepted)

Cram Statements

- ❖ Does not provide Active immunity----->Tetanus toxide
- ❖ Major scavengers at site of inflammation----->Macrophages
- ❖ Axillary sheath is continuation of----->Paravertebral fascia
- ❖ Pacinian corpuscles are----->Rapidly adaptive
- ❖ Parasympathetic effect is----->decrease heart rate
- ❖ Delayed gastric emptying is due to----->CCK
- ❖ Sub occipital nerve----->Rectus capitis posterior
- ❖ Pulmonary artery pressure increase in-----> Hypoxia
- ❖ Hypertensive changes in eye----->Av nipping
- ❖ Immediate action of angiotensin II----->Vasoconstriction
- ❖ HB 20. 2cm regular mass in lower pole. Diagnosis----->Carcinoma
- ❖ Percentage of total daily energy required for quiet normal breathing----->5%
- ❖ Patient with EBV is at the risk of----->Burkett lymphoma
- ❖ UMN lesion has----->Hvper-reflexia
- ❖ Separation of shoulder joint with lateral end of clavicle. Ligament is----->Coracoclavicular
- ❖ Myasthenia gravis treated by----->Neostigmine



- ✓ Now you can join us Online for MD/MS & Fcps Preparation
- ✓ Complete course in 2months including Past paper discussion
- ✓ Join from anywhere using mobile/laptop using internet
- ✓ 100% feasible with job and 100% time adjustment for students
- ✓ www.fcpsworld.com or Contact: 03129684658
- ✓ Hostel Facility is also available (for those who want to join physical classes)



- ❖ **1st step in clot formation----->Platelets adhesion on vessel**
- ❖ **Muscle that helps in standing from sitting----->Gluteus Maximus**
- ❖ **Thumb dermatome----->C6**
- ❖ **Total body water is measured by----->Anti pyrene**
- ❖ **Weil felix test is for----->Rickettsia**
- ❖ **Vertebral bodies stabilized by----->Anterior and Posterior longitudinal ligament**

- ❖ **hx steroids for 10 years, he is at risk for-----> Hyperglycemia**
- ❖ **Albumin cant cross glomerulus due to----->Negative charge**
- ❖ **Thymoma is with -----> Pure red cell aplasia and myasthenia gravis**
- ❖ **hx of gall stones. drug can we give after morphine----->Hyosine**
- ❖ **Remnant of umbilical vein----->ligamentum teres (The ligamentum teres is the obliterated fibrous remnant of the left umbilical vein of the fetus. It originates at the umbilicus. It passes superiorly in the free margin of the falciform ligament.)**
- ❖ **Cabergolin is-----> D2 agonist**
- ❖ **cause of hepatic adenoma----->Aflatoxin**



- ✓ Now you can join us Online for MD/MS & Fcps Preparation
- ✓ Complete course in 2months including Past paper discussion
- ✓ Join from anywhere using mobile/laptop using internet
- ✓ 100% feasible with job and 100% time adjustment for students
- ✓ www.fcpsworld.com or Contact: 03129684658
- ✓ Hostel Facility is also available (for those who want to join physical classes)



- ❖ Down syndrome, after 40 years of most common manifestation-----
>Alzheimers disease
- ❖ 80 year old female PT, APTT, INR normal but ecchymosis on hand-----
>Capillary abnormality
- ❖ Vit. C deficiency result in loss of----->Hydroxylation of pro-collagen
- ❖ Pain due to parotid gland carried by nerve-----> Auriculo temporal nerve
- ❖ hormone works through cyclic amp----->TSH
- ❖ Blood supply of the heart depends upon----->Oxygen consumption
- ❖ most potent response of body when bp falls below 60mmhg----->CNS
ischemic response
- ❖ Quatrain malaria is caused by----->Plasmodium malaria
- ❖ Name the Premalignant vulva----->Pagets disease
- ❖ Cancer due to radiation occurs after----->10 years
- ❖ Thirst is mediated by.-----> Angiotensin II
- ❖ total perentral nutrition side effect----->Hyperglycemia
- ❖ drug for rheumatoid arthritis with gastric ulcer----->Ibuprofen
- ❖ hx of fall, has urinary incontinence, nerve roots are----->S2, S3, S4
- ❖ After Terminal ileal resection there will be deficiency of----->Vitamin B12
(Retention of terminal ileum tends to preserve vitamin B12 absorption capacity. Thus, if more than 60 cm of terminal ileum is removed, fat and



- ✓ Now you can join us Online for MD/MS & Fcps Preparation
- ✓ Complete course in 2months including Past paper discussion
- ✓ Join from anywhere using mobile/laptop using internet
- ✓ 100% feasible with job and 100% time adjustment for students
- ✓ www.fcpsworld.com or Contact: 03129684658
- ✓ Hostel Facility is also available (for those who want to join physical classes)



B12 malabsorption are likely. The Schilling test is an indicator of the degree of terminal ileal dysfunction)

- ❖ **Severe diarrhea leads to----->Hyponatremia**
- ❖ **Cold sensation carried by receptor----->Krause end bulb**
- ❖ **A soldier returned feom siachin with headache and peripheral cyanosis, cause ----->Secondary polycythemia**
- ❖ **labia majora lymph drainage ----->Medial superficial inguinal LN**
- ❖ **after excessive sweating pt took water, what will increase----->ICF**
- ❖ **Shigella causes dysentery by----->Mucosal invasion**
- ❖ **Content of anterior mediastinum----->Thymus**
- ❖ **Patient had depressed nasal bridge, caseating granuloma was found, and zn staining positive, Diagnosis-----> Leprosy**
- ❖ **Malignant melanoma, 1st line of defense----->NK cells**
- ❖ **Thymus at the age of 10 years----->inferior border of thyroid till 4th costal cartilage.**
- ❖ **Best thrombolytic for heart disease----->Streptokinase**
- ❖ **Part of portal system is-----> Hepatic vein**

- ❖ **GVE of Vagus nerve----->Dorsal motor nucleus**



- ✓ Now you can join us Online for MD/MS & Fcps Preparation
- ✓ Complete course in 2months including Past paper discussion
- ✓ Join from anywhere using mobile/laptop using internet
- ✓ 100% feasible with job and 100% time adjustment for students
- ✓ www.fcpsworld.com or Contact: 03129684658
- ✓ Hostel Facility is also available (for those who want to join physical classes)



- ❖ **Veins open directly into right atrium----->Anterior cardiac vein**
- ❖ **complain of abdominal pain after meals with fatty stool. Best test----->Stool analysis**
- ❖ **Ca prostate metastasizes to skull via----->Vertebral venous plexus**
- ❖ **newborn with epicanthal folds, anomaly is-----> Down syndrome**
- ❖ **Rete ridges in malignancy is in----->Verrucous Carcinoma**
- ❖ **doc for Schistosomia----->Praziquantel**
- ❖ **Stroke of internal capsule with unilateral hemiplegia. location of lesion---->Anterior part of posterior limb**
- ❖ **Oral-faecal transmission----->Hep. E**
- ❖ **in Osteogenesis alp is released by----->osteoblast**
- ❖ **nerve arising from trunk of brachial plexus is-----> Suprascapular nerve**
- ❖ **Parasympathectomy will have a greatest effect on ----->G1 muscles**
- ❖ **Glucose absorbed through----->Secondary active transport along with sodium**
- ❖ **Rods in comparison to cones----->Detect low intensity light**



- ✓ Now you can join us Online for MD/MS & Fcps Preparation
- ✓ Complete course in 2months including Past paper discussion
- ✓ Join from anywhere using mobile/laptop using internet
- ✓ 100% feasible with job and 100% time adjustment for students
- ✓ www.fcpsworld.com or Contact: 03129684658
- ✓ Hostel Facility is also available (for those who want to join physical classes)



- ❖ **Neurosecretory hormone accumulates in----->Nerve endings**
- ❖ **Weight lifted by bodybuilder and suddenly drops involve part is-----**
 >Golgi tendon organ
- ❖ **Right border of heart is formed by----->Right atrium**
- ❖ **hx hirsutism, irregular menstrual cycle, she has increased-----**
 >Androstenedione
- ❖ **Montoux induration due to----->CD4 + cells**
- ❖ **Posterior fibres of temporalis cause----->Retrusion of mandible**
 (posterior portion has fibers which run horizontally and contraction of this portion results in retrusion of the mandible.)
- ❖ **lost sensation of anterior chin up to suprasternal notch. Dermatome involved is----->C4**
- ❖ **Microbes are removed in lung by-----> H₂O₂**
- ❖ **Lambert eaten syndrome----->Antibodies against Ca⁺ channel**
- ❖ **Hodgkins lymphoma with best prognosis subtype----->Nodular sclerosing**
- ❖ **vessel has Maximum CO₂ concentration----->Umbilical arteries**
- ❖ **Gluteus muscles are supplied by----->superior and inferior gluteal nerve**



- ✓ Now you can join us Online for MD/MS & Fcps Preparation
- ✓ Complete course in 2months including Past paper discussion
- ✓ Join from anywhere using mobile/laptop using internet
- ✓ 100% feasible with job and 100% time adjustment for students
- ✓ www.fcpsworld.com or Contact: 03129684658
- ✓ Hostel Facility is also available (for those who want to join physical classes)



- ❖ Injury to lateral knee, pain on medial side, ligament involved ,----->Tibial collateral ligament
- ❖ hemi-section of spinal cord at thoracic level. Changes are----->hyperreflexia ipsilaterally (poor recall)
- ❖ Bifurcation of common carodd artery at the level of----->Upper border of thyroid
- ❖ Most common cancer occurring radiation----->Meningioma
- ❖ Oocytes complete their first meiotic division-----> Just before ovulation
- ❖ antidote of acetaminophen is----->N acetylcysteine
- ❖ age group has lowest level of testosterone----->Pre school
- ❖ Spinal sensory neurons are-----> Pseudo unipolar
- ❖ Aspirin act to alleviate pain by----->Decrease synthesis of prostaglandins
- ❖ Jaw abscess with draining sinus and yellow granules. organism is ----->Actinomyces
- ❖ Abdominal injury peritoneal bleeding in lesser sac pain transmitted through----->Greater splanchnic
- ❖ Utero umbilical fistula is caused to----->Patent urachus
- ❖ Most common feature of reversiable cell injury----->Cellular swelling
- ❖ Condition associated with decrease PO2----->Hypoventilation



- ✓ Now you can join us Online for MD/MS & Fcps Preparation
- ✓ Complete course in 2months including Past paper discussion
- ✓ Join from anywhere using mobile/laptop using internet
- ✓ 100% feasible with job and 100% time adjustment for students
- ✓ www.fcpsworld.com or Contact: 03129684658
- ✓ Hostel Facility is also available (for those who want to join physical classes)



- ❖ **Rectum has----->Complete muscular wall**
- ❖ **Loss of thumb opposite, nerve is injured-----> Median nerve**
- ❖ **Chronic inflammation cause tissue damage----->Toxic free radicals**
- ❖ **Strongest layer of intestine----->Submucosa**
- ❖ **During 5th month of intrauterine blood is produced by----->liver**
- ❖ **Tunica vaginalis is remnant of----->Processes vaginalis**
- ❖ **Frontal lobe infarct, artery involved----->anterior cerebral artery**
- ❖ **3rd degree uterine prolapse ligament responsible----->Uterosacral ligament**
- ❖ **Pain and temperature sensations are carried by----->Free nerve endings**
- ❖ **Most common great vessel abnormality----->PDA**
- ❖ **DOC for MARSA----->vancomycin**
- ❖ **Norepinephrine causes----->Local vasoconstriction**
- ❖ **Adenocarcinoma of colon first spread to-----> Liver**
- ❖ **Oropharyngeal carcinoma by.----->HPV {{{HPV can infect the mouth and throat and cause cancers of the oropharynx (back of the throat, including the base of the tongue and tonsils). This is called oropharyngeal cancer.**



- ✓ Now you can join us Online for MD/MS & Fcps Preparation
- ✓ Complete course in 2months including Past paper discussion
- ✓ Join from anywhere using mobile/laptop using internet
- ✓ 100% feasible with job and 100% time adjustment for students
- ✓ www.fcpsworld.com or Contact: 03129684658
- ✓ Hostel Facility is also available (for those who want to join physical classes)



HPV is thought to cause 70% of oropharyngeal cancers in the United States.}}

❖ **Cutaneous sensation is lost on dorsum of thumb due to injury -----**

>Radial

❖ **Increase in renin causes----->vaso constriction by angiotensin 2**

❖ **Data obtained in presence or absence of vomiting is----->Nominal**

❖ **Crescent formation in glomerulus is by----->Parietal epithelial cells**

❖ **Sympathetic system activation leads to----->Bronchodilation**

❖ **scenerio of Measles. Feature is ----->Kopliks spot**

❖ **response of body toacidosis----->CNS depression**

❖ **Nor epinephrine effect on the heart is----->Increased diastolic heart rate**

❖ **Grading in a tumour indicates----->Degree of anaplasia**

❖ **the premalignant lesion of breast----->Atypical hyperplasia of duct**

❖ **11 year old girl, last to ossify on x-ray elbow----->lateral epicondyle**

❖ **Foul smelling discharge due to----->Bacteroides fragilis**



- ✓ Now you can join us Online for MD/MS & Fcps Preparation
- ✓ Complete course in 2months including Past paper discussion
- ✓ Join from anywhere using mobile/laptop using internet
- ✓ 100% feasible with job and 100% time adjustment for students
- ✓ www.fcpsworld.com or Contact: 03129684658
- ✓ Hostel Facility is also available (for those who want to join physical classes)



- ❖ **Most malignant is-----> Melanoma**
- ❖ **A patient known case of CKD wr BUN 3, creatinine 7, of tl following drug is contraindicated----->Gentamycin**
- ❖ **Inc. PT, APTT, FDP and low PLT-----> DIC**
- ❖ **common site of rib fracture-----> Angle**
- ❖ **Fat embolism----->After 12 hours**
- ❖ **cervical squamous epithelium with pleomorphic cells ----->Dysplasia**
- ❖ **major support of uterus----->round ligament**
- ❖ **Virus related cancer----->T- cell leukemia**
- ❖ **fat soluble anesthetic is ----->More potent**
- ❖ **After hip fracture with pelvis shifted to one side. Muscle paralyzed is-----> Gluteus medius , gluteus minimus**
- ❖ **bronchopulmonary segment----->supplied by tertiary bronchioles**
- ❖ **Nucleus ambiguous present in----->Medulla**
- ❖ **No surface agglutinins in blood group----->AB+**
- ❖ **Heparin is released by----->Mast cells**
- ❖ **In Sepsis poor prognosis due to----->DIC**
- ❖ **Left gastric artery is a branch of----->Celiac artery**



- ✓ Now you can join us Online for MD/MS & Fcps Preparation
- ✓ Complete course in 2months including Past paper discussion
- ✓ Join from anywhere using mobile/laptop using internet
- ✓ 100% feasible with job and 100% time adjustment for students
- ✓ www.fcpsworld.com or Contact: 03129684658
- ✓ Hostel Facility is also available (for those who want to join physical classes)



- ❖ Sample of trponema pallidum is to be taken from----->Genital sores
- ❖ Artery that remains in true pelvis is-----> Middle rectal artery
- ❖ Most important in stress----->Cortisol
- ❖ Corneal transparency is maintained by----->Corneal endothelium
- ❖ tall man presented with sudden chest pain and hx of dislocation of crystalline lens. Diagnosis----->Marfan syndrome
- ❖ Earliest manifestation of vitamin Adeficiency----->Night blindness
- ❖ Mode of inheritance of ontogenesis imperfect----->Autosomal dominant
- ❖ Death due to food poisoning result from----->Clostridium botulinum
- ❖ Infant hematocrit is----->55%
- ❖ Baroreceptors reflex increases ----->MAP
- ❖ Renal plasma flow is measured by----->PAH Para-aminohippurate
- ❖ Artificial pacemaker placed in heartfor defect in conduction----->AV node
- ❖ remnant of gubemaculum testes----->Scrotal ligament
- ❖ Veins of brain are direct tributaries of----->Dural sinuses
- ❖ Blood group agglutinogens-----> Secreted by saliva
- ❖ Earliest sign of atheroma----->Fatty streaks



- ✓ Now you can join us Online for MD/MS & Fcps Preparation
- ✓ Complete course in 2months including Past paper discussion
- ✓ Join from anywhere using mobile/laptop using internet
- ✓ 100% feasible with job and 100% time adjustment for students
- ✓ www.fcpsworld.com or Contact: 03129684658
- ✓ Hostel Facility is also available (for those who want to join physical classes)



- ❖ Muscle injury indicated by----->CK-MM
- ❖ Hyoid bone lies at the level of----->C3
- ❖ at which level crossing of cervical spinal cord occurs----->C7
- ❖ Left circumflex artery MI effects----->Posterior wall of left ventricle
- ❖ polyuria due to raised blood glucose----->osmotic effect of glucose
(excess glucose ends up in the urine, where it pulls more water and results in more urine)
- ❖ originate from Posterior ramus of c2 ----->Greater occipital nerve
- ❖ organism is most likely involved in allergic reactions----->
Mycobacterium tuberculosis
- ❖ For the initial diagnosis of leprosy-----> Nasal scapings
- ❖ Ca pancreas head will lead to----->Obstruction of CBD
- ❖ gene amplification is feature of----->Neuroblastoma
- ❖ dietary substance is a carcinogen and play a role in carcinoma
esophagus----->Nitrosamines
- ❖ Femoral head nerve supply-----> Retinacular artery

- ❖ Parallel chromosomes held together at chromatid in----->Prophase
- ❖ Patent lumen of allantois results in.----->Urachal fistula



- ✓ Now you can join us Online for MD/MS & Fcps Preparation
- ✓ Complete course in 2months including Past paper discussion
- ✓ Join from anywhere using mobile/laptop using internet
- ✓ 100% feasible with job and 100% time adjustment for students
- ✓ www.fcpsworld.com or Contact: 03129684658
- ✓ Hostel Facility is also available (for those who want to join physical classes)



- ❖ **loss of dorsal foot sensations, no dorsiflexion----->Common perineal nerve at fibular neck**
- ❖ **Tumor of breast grading----->**
- ❖ **iron deficiency anemia has----->Low MCV, low MCH, low MCHC**
- ❖ **Thyroglobulin synthesized by----->Follicular cells**
- ❖ **Gastro esophageal junction stabilized or tone increased by----->Metoclopramide**
- ❖ **malnutrition edema is by----->Decreased albumin**
- ❖ **Ulnar nerve injury at medial epicondyle injury. Loss of----->Medial 2 lumbricals**
- ❖ **Voluntary control of micturition----->Pudendal N**
- ❖ **44yrs female has lost weight over 12 months, she has noticed episodes where her heart beats rapidly and strongly, her pulse is 90bpm and regular, enlarged goiter and her ECG shows sinus rhythm. What is her problem----->Standard error ofmean & T-Value**
- ❖ **variceal bleed vessel involve----->Left Gastric Vein**
- ❖ **A Deficiency of enzyme produced at brush border will cause----->Lactose intolerance**
- ❖ **Center of micturition----->Pons (also medulla)**

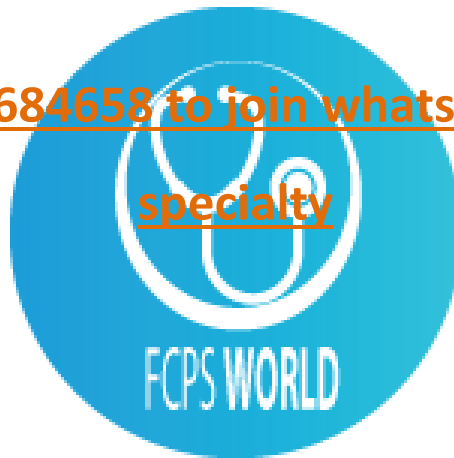


- ✓ Now you can join us Online for MD/MS & Fcps Preparation
- ✓ Complete course in 2months including Past paper discussion
- ✓ Join from anywhere using mobile/laptop using internet
- ✓ 100% feasible with job and 100% time adjustment for students
- ✓ www.fcpsworld.com or Contact: 03129684658
- ✓ Hostel Facility is also available (for those who want to join physical classes)



- ❖ In shock GFR is low due to----->Low arterial blood
- ❖ ICF differs from ECF in terms of----->PH
- ❖ CO₂ from tissue to lungs is camec----->Bicarbonate ions in plasma

Whatsapp 03129684658 to join whatsapp group of your specialty



- ✓ Now you can join us Online for MD/MS & Fcps Preparation
- ✓ Complete course in 2months including Past paper discussion
- ✓ Join from anywhere using mobile/laptop using internet
- ✓ 100% feasible with job and 100% time adjustment for students
- ✓ www.fcpsworld.com or Contact: 03129684658
- ✓ Hostel Facility is also available (for those who want to join physical classes)

Www.Fcpsworld.com (Institute for Fcps & Md/Ms)

GOLD STANDRD OF MD/MS & FCPSBuy All past papers GoldStandard FCPS order at: 03100220370

www.facebook.com/FcpsWorld

www.facebook.com/GynaeObsWorld

www.facebook.com/Ophtworld



FCPS-1 ONLINE COURSE

Join FcpsWorld Online preparation courses and clear exam in 1st Attempt.

WWW.FCPSWORLD.COM



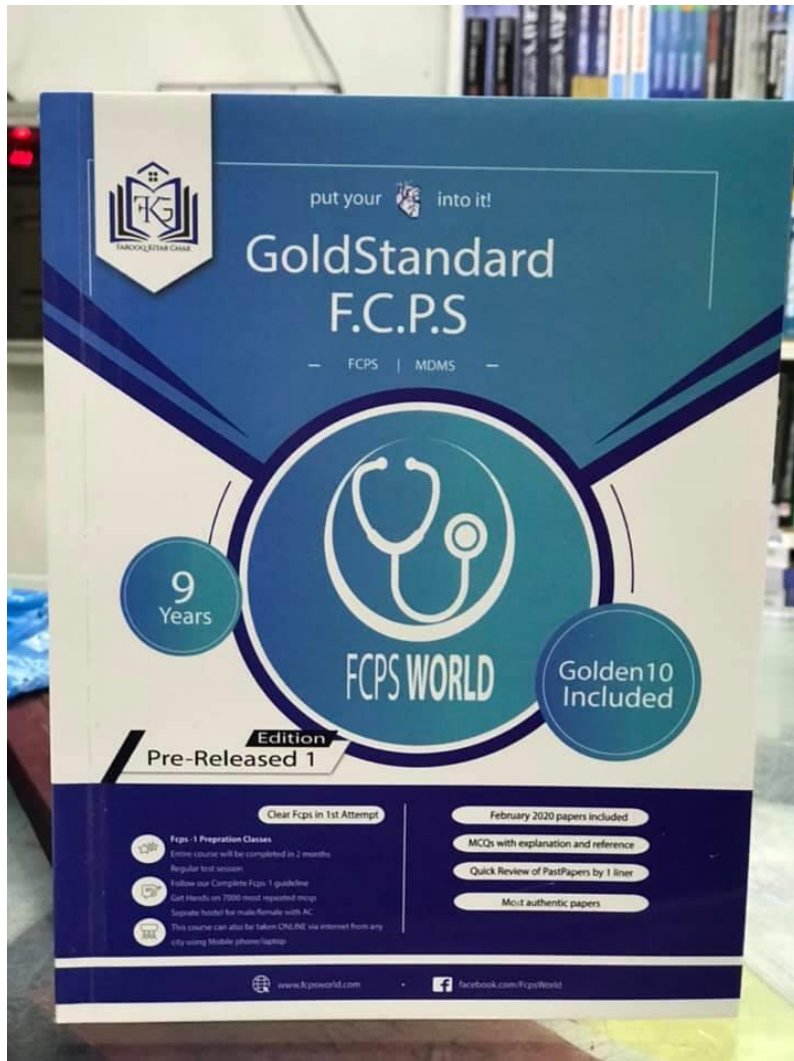
Fcpsworld



www.fcpsworld.com



- ✓ Now you can join us Online for MD/MS & Fcps Preparation
- ✓ Complete course in 2months including Past paper discussion
- ✓ Join from anywhere using mobile/laptop using internet
- ✓ 100% feasible with job and 100% time adjustment for students
- ✓ www.fcpsworld.com or Contact: 03129684658
- ✓ Hostel Facility is also available (for those who want to join physical classes)



GoldStandard **FCPS**

✓ Feb 2020 papers (recent updated)

✓ Authentic most repeated papers.

✓ MCQs with explanation and reference.

✓ 1 liner for rapid revision. **(Cram them)**

✓ Mcqs with explanation and Ref.

✓ Clear FCPS-1 in 1st Attempt (Dont miss chance)

✓ **Free Cash on DeliveryOrder at 03100220370**



- ✓ Now you can join us Online for MD/MS & Fcps Preparation
- ✓ Complete course in 2months including Past paper discussion
- ✓ Join from anywhere using mobile/laptop using internet
- ✓ 100% feasible with job and 100% time adjustment for students
- ✓ www.fcpsworld.com or Contact: 03129684658
- ✓ Hostel Facility is also available (for those who want to join physical classes)

Www.Fcpsworld.com (Institute for Fcps & Md/Ms)

GOLD STANDRD OF MD/MS & FCPSBuy All past papers GoldStandard FCPS order at: 03100220370

www.facebook.com/FcpsWorld

www.facebook.com/GynaeObsWorld

www.facebook.com/Ophtworld



www.FCPSWORLD.com

GoldStandard FCPS

Surgery & Allied

7th July 2020 Evening

- ✓ Clear FCPS-1 in **FIRST ATTEMPT**
- ✓ Entire course will be completed in 2 months.
- ✓ Live lectures via video Portal
- ✓ Daily Test session (Test discussion will be on Via Portal)
- ✓ Follow our complete guideline for FCPS-1
- ✓ Get Hands on 20,000 CPSP question (most of them repeat)
- ✓ Free study material, whatsapp group (only for our students)
- ✓ Don't Miss the chance. **(LIMITED SEATS AVAILABLE.)**
- ✓ WWW.FCPSWORLD.com
- ✓ WWW.facebook.com/fcpsworld
- ✓ For Details Phone# 03129684658



- ✓ Now you can join us Online for MD/MS & Fcps Preparation
- ✓ Complete course in 2months including Past paper discussion
- ✓ Join from anywhere using mobile/laptop using internet
- ✓ 100% feasible with job and 100% time adjustment for students
- ✓ www.fcpsworld.com or Contact: 03129684658
- ✓ Hostel Facility is also available (for those who want to join physical classes)



(Errors and omissions excepted)

Cram Statements

- ❖ **Upper 1/3 of esophagus supplied by----->**Inferior thyroid artery
- ❖ **Baby having pallor mev 56. Diagnosis----->**Thalassemia trait
- ❖ **Rotation of scapula is by----->**Serratus ant
- ❖ **Sudden rise in pulse pressure is due to----->**Decrease in arterial compliance
- ❖ **DOC for Taeniasolium----->** Praziquantel
- ❖ **the largest cell in blood----->**monocyte
- ❖ **Epicardium blood supply is by----->**Pericardiophrenic artery
- ❖ **DOC of bacterial meningitis----->** Ceftriaxone
- ❖ **Abduction of arm lost,nerves injured----->**Axillary nerve + suprascapular nerve
- ❖ **raised direct bilirubin, ALP was 10 timesdiagnosis is----->** Extrahepatic cholestasis
- ❖ **left sided chest pain, 4th-6th intercostal tenderness. Cardic markers normal----->**Costochondritis
- ❖ **green coloured organism is----->** Pseudomonas
- ❖ **Third heart sound is produced due to----->**Rapid ventricular filling



- ✓ Now you can join us Online for MD/MS & Fcps Preparation
- ✓ Complete course in 2months including Past paper discussion
- ✓ Join from anywhere using mobile/laptop using internet
- ✓ 100% feasible with job and 100% time adjustment for students
- ✓ www.fcpsworld.com or Contact: 03129684658
- ✓ Hostel Facility is also available (for those who want to join physical classes)



- ❖ **Fat necrosis can be seen in----->** Trauma
- ❖ **lymphadenopathy, CD 15, CD 30 positive, double nucleated cells are in----**
---> hodgkins lymphoma
- ❖ **Scalp blood vessels are present inlayer----->** between skin and aponeurosis
- ❖ **Antibodies are formed by----->** Plasma cells
- ❖ **most common lobe of prostate involed in CA----->**Posterior
- ❖ **Mother brought her neonate with signs of meningitis. organism is-----**
>group B streptococci (agalactiae)
- ❖ **structure is in immediate relation with Internal jugular vein after leaving from jugular foramen----->** Internal carotid artery
- ❖ **Inferior thyroid artery ligated,nerve damage----->** Recurrent laryngeal nerve
- ❖ **in shock best way to tell resuscitation----->** Increase urine output
- ❖ **Blood in CSF. problem----->** Subarachnoid hemorrhage
- ❖ **Neck of bladder in female----->** Above surface of urogenital diaphragm
- ❖ **micturitionreflex----->** Sacral segments of spinal cord
- ❖ **Muscle of stabilizing knee joint----->** Vastus laterals



- ✓ Now you can join us Online for MD/MS & Fcps Preparation
- ✓ Complete course in 2months including Past paper discussion
- ✓ Join from anywhere using mobile/laptop using internet
- ✓ 100% feasible with job and 100% time adjustment for students
- ✓ www.fcpsworld.com or Contact: 03129684658
- ✓ Hostel Facility is also available (for those who want to join physical classes)



- ❖ **Cimetidine is not taken with sucralfate. Reason----->** decrease absorption
- ❖ **Most common cause of mental retardation is----->**Fragile X syndrome
- ❖ **drug that has no receptor----->** Aluminum hydroxide
- ❖ **Vitamin is required far coenzyme A----->**Pantothenic acid
- ❖ **fell from bicycle.loss of lateral sensation of arm----->** Axillary nerve
- ❖ **Donut shaped organisms in stool ----->** Cryptosporidium
- ❖ **Complication of 3rd degree burn is----->** Contracture
- ❖ **Avulsion of lesser trochanter,contraction of which muscle will be seen---->**Psoas
- ❖ **Major stress hormone----->** cortisol
- ❖ **smoker with history of weight loss,diagnosis is ----->** Bronchogenic carcinoma
- ❖ **A person lost 3 L of water and drink 3 L of water, what will increase----->**ICF volume
- ❖ **RH negative transfused RH+. Treated by----->** Anti D antibodies
- ❖ **Colon carcinoma marker----->**CEA
- ❖ **Tumour suppressor gene----->**P53
- ❖ **Finger cut will release----->** Histamine
- ❖ **Combining two substance is by----->** Synthetize



- ✓ Now you can join us Online for MD/MS & Fcps Preparation
- ✓ Complete course in 2months including Past paper discussion
- ✓ Join from anywhere using mobile/laptop using internet
- ✓ 100% feasible with job and 100% time adjustment for students
- ✓ www.fcpsworld.com or Contact: 03129684658
- ✓ Hostel Facility is also available (for those who want to join physical classes)



- ❖ joint pains, papilledema, dry mucosa is in toxicity of-----> Vitamin A
- ❖ pain mediator-----> Bradykinin
- ❖ bronchiectasis, infertility and situs in versus. Diagnosis-----> Kartageners syndrome
- ❖ The nerve or part of brachial plexus gives a terminal branch and it supplies medial aspect of arm-----> medial cord
- ❖ longest duration of anesthesia and decreases pain as well-----> Bupivacaine
- ❖ Rigor mortis is due to-----> Decrease ATP
- ❖ In second degree heart block-----> Atria contact more than the ventricles
- ❖ homeostasis of internal environment of body is maintained by-----> Negative feedback
- ❖ characteristic feature of follicular carcinoma of thyroid gland-----> Invade Endometrial proliferation capsule
- ❖ anterior cerebral artery (ACA) supply-----> Somatosensory area
- ❖ Cytokeratin is an example of-----> Intermediate filament
- ❖ Middle cerebral artery supplies-----> Insula and opercula



- ✓ Now you can join us Online for MD/MS & Fcps Preparation
- ✓ Complete course in 2 months including Past paper discussion
- ✓ Join from anywhere using mobile/laptop using internet
- ✓ 100% feasible with job and 100% time adjustment for students
- ✓ www.fcpsworld.com or Contact: 03129684658
- ✓ Hostel Facility is also available (for those who want to join physical classes)



- ❖ **type of hypersensitivity reaction of post streptococcal glomerulonephritis----->** Type III
- ❖ **PDA (patent ductus arteriosus) mostly present in----->** In pre term births (After birth, the ductus arteriosus normally closes within two or three days. In premature infants, the connection often takes longer to close. If the connection remains open, its referred to as a patent ductus arteriosus. The abnormal opening causes too much blood to circulate to the babys lungs and heart.)
- ❖ **Halothane should be given with----->** Nitrous oxide
- ❖ **chorea athetosis is feature of----->** Huntingtons disease
- ❖ **Median umbilical ligament is remnant of----->** Urachus
- ❖ **floor of inguinal canal is formed by----->** inguinal ligament & lacunar ligament
- ❖ **Lowest testosterone in age----->** Pre-school age
- ❖ **hx of pan chewing, oral lesion is premalignant----->** submucosal fibrosis
- ❖ **Canalicular stage of lung development----->** Alveolar ducts formation
- ❖ **Regarding relation of hip joint----->**Inferior to obturator extemus
- ❖ **Pneumonia in cystic fibrosis. Organism----->** Pseudomonas
- ❖ **Thyroid cancer in lady cervical lymphadenopathy----->** Papillary



- ✓ Now you can join us Online for MD/MS & Fcps Preparation
- ✓ Complete course in 2months including Past paper discussion
- ✓ Join from anywhere using mobile/laptop using internet
- ✓ 100% feasible with job and 100% time adjustment for students
- ✓ www.fcpsworld.com or Contact: 03129684658
- ✓ Hostel Facility is also available (for those who want to join physical classes)



- ❖ Anterior dislocation of shoulder causes damage to-----> Axillary nerve
- ❖ Estimatement of renal plasma flow is by-----> PAH
- ❖ Diffusion depends upon -----> Surface area of a membrane
- ❖ in CRF there is hypertrophy of-----> Parathyroid
- ❖ cancer of infra temporal fossa eroding floor of middle cranial fossa.
Structure will be damaged-----> Greater wing of sphenoid
- ❖ Lymphocytes enter . in thymus through-----> Afferent subscapular sinus
- ❖ Cushings show-----> Hyperglycemia
- ❖ hx stroke now has depression and confusion. lobe of brain involved-----> Frontal
- ❖ Thumb opposition is by-----> Median nerve
- ❖ Anterior duodenal perforation contents leak into-----> Right paracolic gutter
- ❖ Psoas muscle insertion-----> Lesser trochanter
- ❖ Oral premalignant condition-----> Lichen planus
- ❖ Amoeba ulcer most common site-----> Caecum
- ❖ Norepinephrine is released from-----> Preganglionic sympathetic fibres



- ✓ Now you can join us Online for MD/MS & Fcps Preparation
- ✓ Complete course in 2months including Past paper discussion
- ✓ Join from anywhere using mobile/laptop using internet
- ✓ 100% feasible with job and 100% time adjustment for students
- ✓ www.fcpsworld.com or Contact: 03129684658
- ✓ Hostel Facility is also available (for those who want to join physical classes)



- ❖ **Sperms become partially motile in.-----> Epididymis**
- ❖ **Voluntary muscle contraction has alpha motor and gamma motor----->descending pathway**
- ❖ **In hepatic cirrhosis there will be low-----> Albumin**
- ❖ **Adrenocortical insufficiency with increase urine sodium is due to----->Unable to reabsorb from tubules**
- ❖ **nerve damage in appendicitis operation-----> Iliohypogastric nerve**
- ❖ **post Gastrectomy have megaloblastic anemia, treated by-----> IV Vit. B12**
- ❖ **hx of maningitis of CSF show lymphocytes with normal glucose.----->Viral**
- ❖ **In stroke, most likely thrombosis of branch fo internal carotid artery----->MCA**
- ❖ **typhoid vaccination give-----> Active immunity**
- ❖ **Approach for thoracocentesis-----> Lower 9th ICS mid clavicular line**
- ❖ **Abductor of femur-----> gluteus maximus**
- ❖ **Right kidney hilum anterior relation with-----> 2nd part of duodenum (liver was not in option)**
- ❖ **Medial pterygoid and lateral pterygoid cause -----> protrusion of mandible**



- ✓ Now you can join us Online for MD/MS & Fcps Preparation
- ✓ Complete course in 2months including Past paper discussion
- ✓ Join from anywhere using mobile/laptop using internet
- ✓ 100% feasible with job and 100% time adjustment for students
- ✓ www.fcpsworld.com or Contact: 03129684658
- ✓ Hostel Facility is also available (for those who want to join physical classes)



- ❖ **5 pack years of smoking history----->** Squamous metaplasia (best among options)
- ❖ **Amount of iron in adult female----->** 2g
- ❖ **Subacute endocarditis is caused by----->** streptococcus viridians
- ❖ **hx of hepatosplenomegaly and xanthoma. Test should be----->** Anti-mitochondrial antibodies
- ❖ **Free margin of lesser omentum has----->** CBD, hepatic artery, portal vein
- ❖ **pia matter----->** Extends to sulci and fissures
- ❖ **Most imp in metastasis of Carcinoma----->** loss of E-cadherin
- ❖ **Dorsal scapular nerve innervates----->** Levator scapulae
- ❖ **gas has maximum diffusion capacity----->** CO₂
- ❖ **Anterior to piriformis muscle----->** Superior gluteal artery
- ❖ **Increase drug absorption by----->** Increase lipid solubility
- ❖ **Avoid 1st pass effect is by route----->** IV
- ❖ **Drug of choice for bacterial meningitis----->** Ceftriaxone
- ❖ **Ontogenesis imperfecta has defect in----->** Defect in collagen synthesis
- ❖ **Left shift of curve----->** Hypothermia
- ❖ **Tumor with nerve sheath invasion----->** Ex pleomorphic adenoma
- ❖ **DVT thrombus lodges in----->** Pulmonary artery



- ✓ Now you can join us Online for MD/MS & Fcps Preparation
- ✓ Complete course in 2 months including Past paper discussion
- ✓ Join from anywhere using mobile/laptop using internet
- ✓ 100% feasible with job and 100% time adjustment for students
- ✓ www.fcpsworld.com or Contact: 03129684658
- ✓ Hostel Facility is also available (for those who want to join physical classes)



- ❖ **Corticosteroids side effect----->** Purple striate
- ❖ **part of pituitary gland receives signals from Hypothalamus-----**
>Adenohypophysis
- ❖ **BT raised, APTT raised and PT normal----->**vWF disease
- ❖ **Autoregulation of coronary circulation is determined by----->**Myocardial oxygen demand
- ❖ **Prominent Pre-potential----->** SA node
- ❖ **abdominal pain and vomiting for 2 hours, cause is----->** Enterotoxin
- ❖ **Warfarin causing bleeding, treated by----->** Vitamin K
- ❖ **sudden loss of vision. Cause----->** Emboli
- ❖ **Lesion of Wernickes area ----->** Speaks fluently makes no sense
- ❖ **Output nuclei of basal ganglia are----->** Globus pallidus internes + substanta nigra pars reticularis
- ❖ **Turners syndrome genetics----->** 45X0
- ❖ **In thyroid nodule, oval shaped cells filled with amyloid tissue, small cytoplasm. Cause----->** Medullary cancer
- ❖ **Mediator of pain is----->** Prostaglandins & bradykinin
- ❖ **Subdural hematoma is caused by----->** bridging veins



- ✓ Now you can join us Online for MD/MS & Fcps Preparation
- ✓ Complete course in 2months including Past paper discussion
- ✓ Join from anywhere using mobile/laptop using internet
- ✓ 100% feasible with job and 100% time adjustment for students
- ✓ www.fcpsworld.com or Contact: 03129684658
- ✓ Hostel Facility is also available (for those who want to join physical classes)



- ❖ **Thyroglobulin is secreted by----->Follicular cells**
- ❖ **Light falls in front of retina in-----> Myopia**
- ❖ **ECG in acute MI-----> St segment displacement**
- ❖ **loss 1.5L blood blood picture will be-----> Normocytic normochromic**
- ❖ **Malignant tertian malaria is due to-----> Plasmodium falciparum**
- ❖ **1 gm of hemoglobin binds with O2-----> 1.34 ml O2 per gram**
- ❖ **Filtration of substance - excretion substance is-----> Renal secretion**
$$\{\{\{Urinary\ excretion\ rate = Filtration\ rate - Reabsorption\ rate + Secretion\ rate\}\}\}$$
- ❖ **All receptors are-----> Protein in nature**
- ❖ **Bullet injury to cervical region. Nerve of muscle is damaged----->**
Diaphragm
- ❖ **Most abundant immunoglobulin in serum-----> IgG**
- ❖ **Marathon runner started sweating profusely, dizziness, confusion and fell-----> heat exhaustion**
- ❖ **drug is responsible for fractures in asthma-----> Prednisolone**
- ❖ **cause of pneumonia in children-----> Streptococcus pneumonia**
- ❖ **Structure present at crista terminals-----> SA node**
- ❖ **the relation of pituitary gland-----> Tumor causes junctional scotoma**



- ✓ Now you can join us Online for MD/MS & Fcps Preparation
- ✓ Complete course in 2 months including Past paper discussion
- ✓ Join from anywhere using mobile/laptop using internet
- ✓ 100% feasible with job and 100% time adjustment for students
- ✓ www.fcpsworld.com or Contact: 03129684658
- ✓ Hostel Facility is also available (for those who want to join physical classes)



- ❖ Inhaled anesthesia that increases blood flow to the brain----->halothane
- ❖ Pancreatic duodenal artery is a branchof-----> Gastro duodenal artery
- ❖ Hyperemesis gravidarum result in----->Hypokalemia
- ❖ Musclecauses Dorsiflexion and inversion-----> Tibialis anterior
- ❖ Medial longitudinal arch in sole formed by----->Talus
- ❖ Free HB is bound by a protein -----> Haptoglobin
- ❖ type of shock involves dcgranulation of basophils and mast cells-----
>Anaphylactic shock
- ❖ type of necrosis in liver-----> Caseous necrosis.
- ❖ ecg show U waves, Inverted T waves-----> Hypokalemia
- ❖ boy holding 4 books suddenly drops books-----> Inverse stretch reflex
- ❖ farmer after taking care of sheeps has black lesion on his arm with fever.
diagnosis----->Anthrax



- ✓ Now you can join us Online for MD/MS & Fcps Preparation
- ✓ Complete course in 2months including Past paper discussion
- ✓ Join from anywhere using mobile/laptop using internet
- ✓ 100% feasible with job and 100% time adjustment for students
- ✓ www.fcpsworld.com or Contact: 03129684658
- ✓ Hostel Facility is also available (for those who want to join physical classes)

Www.Fcpsworld.com (Institute for Fcps & Md/Ms)

GOLD STANDRD OF MD/MS & FCPSBuy All past papers GoldStandard FCPS order at: 03100220370

www.facebook.com/FcpsWorld

www.facebook.com/GynaeObsWorld

www.facebook.com/Ophtworld



Whatsapp 03129684658 to join whatsapp group of your specialty

FCPS-1 ONLINE COURSE

Join FcpsWorld Online preparation courses and clear exam in 1st Attempt.

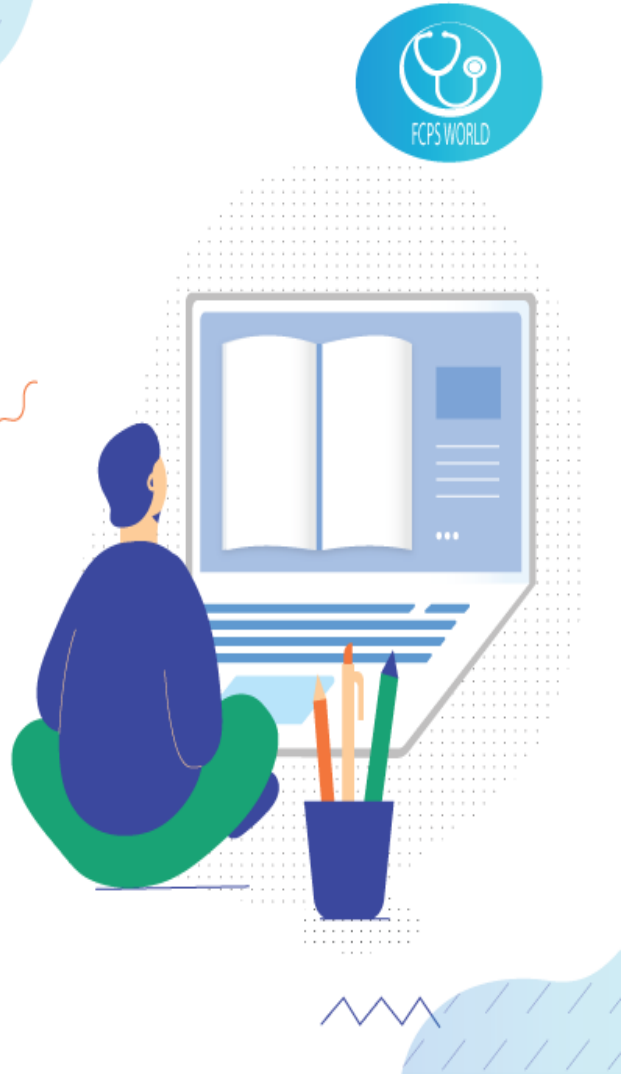
WWW.FCPSWORLD.COM



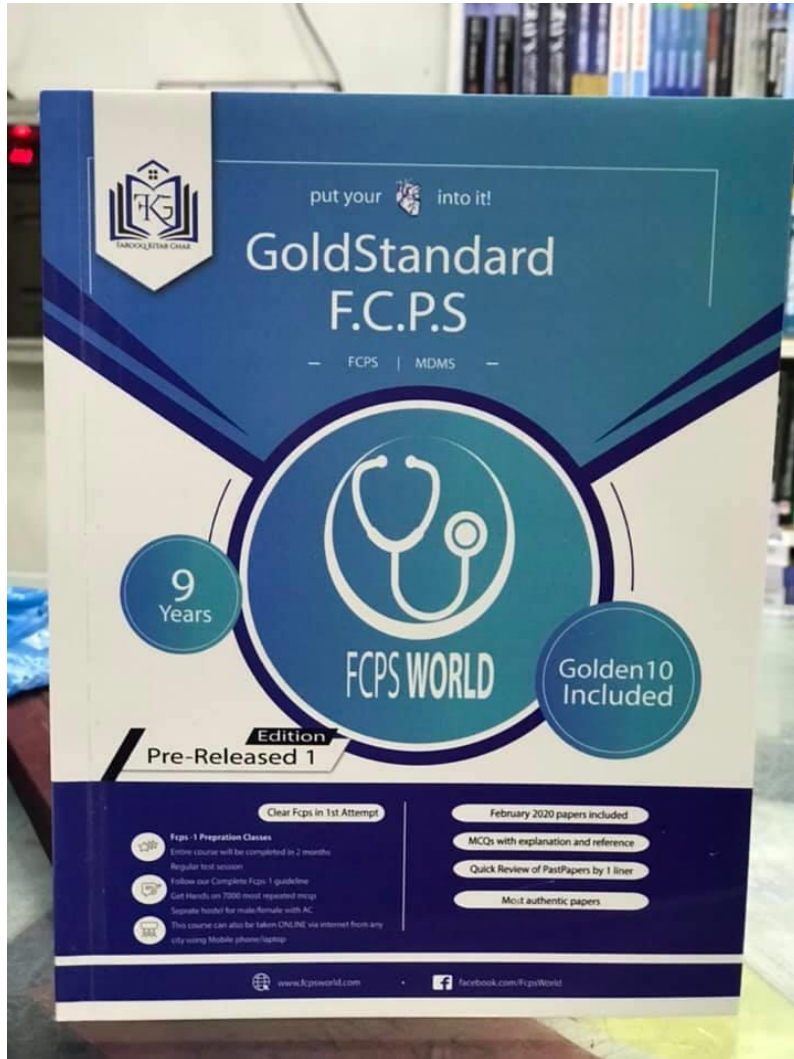
Fcpsworld



www.fcpsworld.com



- ✓ Now you can join us Online for MD/MS & Fcps Preparation
- ✓ Complete course in 2months including Past paper discussion
- ✓ Join from anywhere using mobile/laptop using internet
- ✓ 100% feasible with job and 100% time adjustment for students
- ✓ www.fcpsworld.com or Contact: 03129684658
- ✓ Hostel Facility is also available (for those who want to join physical classes)



GoldStandard **FCPS**

✓ Feb 2020 papers (recent updated)

✓ Authentic most repeated papers.

✓ MCQs with explanation and reference.

✓ 1 liner for rapid revision. (Cram them)

✓ Mcqs with explanation and Ref.

✓ Clear FCPS-1 in 1st Attempt (Dont miss chance)

✓ **Free Cash on DeliveryOrder at 03100220370**



- ✓ Now you can join us Online for MD/MS & Fcps Preparation
- ✓ Complete course in 2months including Past paper discussion
- ✓ Join from anywhere using mobile/laptop using internet
- ✓ 100% feasible with job and 100% time adjustment for students
- ✓ www.fcpsworld.com or Contact: 03129684658
- ✓ Hostel Facility is also available (for those who want to join physical classes)



www.FCPSWORLD.com

GoldStandard FCPS

Surgery & Allied

7th July 2020 Morning

- ✓ Clear FCPS-1 in **FIRST ATTEMPT**
- ✓ Entire course will be completed in 2 months.
- ✓ Live lectures via video Portal
- ✓ Daily Test session (Test discussion will be on Via Portal)
- ✓ Follow our complete guideline for FCPS-1
- ✓ Get Hands on 20,000 CPSP question (most of them repeat)
- ✓ Free study material, whatsapp group (only for our students)
- ✓ Don't Miss the chance. **(LIMITED SEATS AVAILABLE.)**
- ✓ WWW.FCPSWORLD.com
- ✓ WWW.facebook.com/fcpsworld
- ✓ For Details Phone# 03129684658



- ✓ Now you can join us Online for MD/MS & Fcps Preparation
- ✓ Complete course in 2months including Past paper discussion
- ✓ Join from anywhere using mobile/laptop using internet
- ✓ 100% feasible with job and 100% time adjustment for students
- ✓ www.fcpsworld.com or Contact: 03129684658
- ✓ Hostel Facility is also available (for those who want to join physical classes)



(Errors and omissions excepted)

Cram Statements

- ❖ **Autosomal dominant traits are----->Mostly heterozygous trait**
- ❖ **on fracture POP applied. Result will----->Decreased in actin and myosin**
- ❖ **After 5 years of transplant cancer most likely----->Lymphoproliferative disorder**
- ❖ **A case of repeated abortion due to hormonal disturbance----->Progesterone**
- ❖ **Duodenal Ulcer, causing hemoptysis. Cause is----->Anterior perforation, gastro duodenal artery**
- ❖ **movement at atlantoaxial joint----->rotation**
- ❖ **on atopsy pt has thick myocardium Organism is----->Coxsackie virus**
- ❖ **Spore forming----->Clostridium**
- ❖ **Lower limb paralysis, lower face paralysis and homonymous hemianopia area damaged----->Frontal lobe**
- ❖ **Protein requirement in adult-----> 1g/kg**
- ❖ **Septic meningitis caused due to----->Streptococcus pneumonia**
- ❖ **Gram negative rod, c shaped, hemodynamically stable person(contained values of hb, hematocrit) ----->Campylobacter J ujeni**



- ✓ Now you can join us Online for MD/MS & Fcps Preparation
- ✓ Complete course in 2months including Past paper discussion
- ✓ Join from anywhere using mobile/laptop using internet
- ✓ 100% feasible with job and 100% time adjustment for students
- ✓ www.fcpsworld.com or Contact: 03129684658
- ✓ Hostel Facility is also available (for those who want to join physical classes)



- ❖ in Caput medusae, left portal vein channeled to umbilical veins via-----
>Para-umbilical vein
- ❖ Supination of upper limb effected----->Musculocutaneus + Radial nerve
- ❖ Medial wall of ischiorectal fossa is formed by-----> Levator ani
- ❖ Aspirin inhibits----->Thromboxane A2 production
- ❖ Upper left breast drains into----->Anterior axillary lymph nodes
- ❖ Glans penis has lymphatic drainage----->Deep inguinal lvmph nodes
- ❖ Air-borne disease----->Anthrax
- ❖ Bronchial segment is supplied by----->Tertiary bronchus
- ❖ What is collagen fibres----->Stain with cosin
- ❖ tyre factory, presented with painless hematuria and transitional cell bladder carcinoma. cause----->Smoking
- ❖ X linked recessive disease example----->G6Pd deficiency
- ❖ S3 heart sound is produced due----->Rapid ventricular filling

- ❖ Basal ganglia damage----->voluntary movements
- ❖ Systemic embolism arises from----->Left ventricle mural thrombus
- ❖ the important function of progesterone----->Endometrial proliferation
- ❖ pt with headache and diplopia. CSF is blood stained. diagnosis-----
>Subarachnoid hemorrhage



- ✓ Now you can join us Online for MD/MS & Fcps Preparation
- ✓ Complete course in 2months including Past paper discussion
- ✓ Join from anywhere using mobile/laptop using internet
- ✓ 100% feasible with job and 100% time adjustment for students
- ✓ www.fcpsworld.com or Contact: 03129684658
- ✓ Hostel Facility is also available (for those who want to join physical classes)



- ❖ **Conductive system of heart lies in----->Sub endocardium**
- ❖ **Vitamins are present in----->Vegetables**
- ❖ **Drug of choice for acute pancrea is-----> Pethidine**
- ❖ **Nutrition of bone matrix is-----> Ostcocyte**
- ❖ **Lymphatic drainage from lateral part of breast----->anterior axillary LN**
- ❖ **Ovarian carcinoma lymphdrainage in nodes----->Para-aortic**
- ❖ **ureter injured during hysterectomy----->Passes behind broad ligament**
- ❖ **drug that block adenyl cyclase and low cAMP is used for----->Vibrio cholera**
- ❖ **TBW of 42 liter.Interstitial fluid is about----->11.2L**
- ❖ **After 4 hours of MI most sensitive test----->Troponin 1**
- ❖ **nerve of extensor carpi ulnar is----->Posterior interosseous nerve**
- ❖ **Peripheral neuritis cause----->Thiamine defi**
- ❖ **Chemotherapy cause----->Apoptosis**
- ❖ **Pericardiocentesis location for straw colored fluid----->Left parasternal 3rd intercostal space**
- ❖ **Internal oblique muscle aponeurosis----->Conjoint tendon**
- ❖ **Child birth is a process of----->Positive feedback mechanism**
- ❖ **activation of caspases is seen in----->Apoptosis**



- ✓ Now you can join us Online for MD/MS & Fcps Preparation
- ✓ Complete course in 2months including Past paper discussion
- ✓ Join from anywhere using mobile/laptop using internet
- ✓ 100% feasible with job and 100% time adjustment for students
- ✓ www.fcpsworld.com or Contact: 03129684658
- ✓ Hostel Facility is also available (for those who want to join physical classes)



- ❖ During exercise person feels tired due to ----->Increased heart rate
- ❖ UMN lesion results in----->Hyperreflexia
- ❖ After thyroidectomy developed hoarseness. vocal cords are rigid and tense. Area damaged----->Cricothyroid
- ❖ Metastasis of tumor depends upon-----> Basement membrane invasion
- ❖ salivary gland is mainly mucinous----->Sublingual
- ❖ Best site of pleurocentesis----->lower part of 9th intercostal space in midaxillary line
- ❖ Parotid gland nerve supply----->General visceral efferent
- ❖ Bundle of Hiss supplied by----->RCA
- ❖ damaged to nucleus gracilis and cuneatus cause----->Astereognosis
- ❖ lambert Eaton syndrome----->antibody against Ca⁺ channels
- ❖ O₂ transport from alveoli to RBC is an example of----->Passive diffusion
- ❖ Urinary bladder----->supplied by sympathetic and parasympathetic
- ❖ During respiration, increase in diameter of chest----->External intercostal muscle
- ❖ Hx of chest infection. presented with epistaxis, purpura, investigation will you order first----->BT
- ❖ malignant hyperthermia Receptors are-----> Ryanodine receptor



- ✓ Now you can join us Online for MD/MS & Fcps Preparation
- ✓ Complete course in 2months including Past paper discussion
- ✓ Join from anywhere using mobile/laptop using internet
- ✓ 100% feasible with job and 100% time adjustment for students
- ✓ www.fcpsworld.com or Contact: 03129684658
- ✓ Hostel Facility is also available (for those who want to join physical classes)



- ❖ best way to clean OT or floor of infected by AIDs----->1% hypochlorite
- ❖ PDGF are present in platelets in----->Alpha granules
- ❖ nonhealing wound on foot despite of dressing. Most likely cause of impaired healing----->Mobility
- ❖ In neonate spinal cord end at----->L3
- ❖ A middle aged woman with scleral icterus with no other finding, likely cause is-----> Intravascular hemolysis
- ❖ Transitional epithelium derived from----->Endoderm
- ❖ Lobules and alveoli developed by----->GnRH
- ❖ Starvation causes----->Increase ketone bodies in serum
- ❖ Increase in hypothalamus set point will cause----->Decreased sweating
- ❖ In erect position hyoid bone lies at----->C3
- ❖ hx of gum bleeds, pt raised, apt raised, bt raised, Aptt raised ----->DIC
- ❖ lymphatic drainage of the lower lip----->Submental and submandibular
- ❖ Increased pre-potential----->SA node
- ❖ CO2 transport as----->HCO₃⁺
- ❖ muscle is responsible for unlocking the knee joint----->Popliteus
- ❖ Eversion of foot is by----->Peroneus longus
- ❖ loss of sensation at root of thumb, damage to nerve----->Radial nerve
- ❖ HLA-B27 positive in----->Reactive arthritis



- ✓ Now you can join us Online for MD/MS & Fcps Preparation
- ✓ Complete course in 2months including Past paper discussion
- ✓ Join from anywhere using mobile/laptop using internet
- ✓ 100% feasible with job and 100% time adjustment for students
- ✓ www.fcpsworld.com or Contact: 03129684658
- ✓ Hostel Facility is also available (for those who want to join physical classes)



- ❖ **Hepatocellular carcinoma is due to----->**Clonorchis sinensis
- ❖ **vessel runs in interventricular groove----->**Middle cardiac vein
- ❖ **Maximum O2 saturation in----->**Umbilical Veins
- ❖ **Splenic vein drainage----->**Posterior upper body and neck of pancreas
- ❖ **epistaxis and history of vaccination. Diagnosis----->**ITP
- ❖ **in shock with MAP <50, most rapid response is by----->**CNS ischemic response
- ❖ **Autoimmune hemolytic anemia common cause----->**Drugs
- ❖ **pap smear show large nuclei with poikilocytosis. Cause is----->** Dysplasia
- ❖ **pregnant lady developed short of breath and died on her way to hospital ER. Cause----->** Amniotic fluid embolism
- ❖ **Hx of amenorrhea, prolectenimia. structure damaged is----->**Pituitary gland
- ❖ **recurrent bleeding a epistaxis----->**platelets deficiency
- ❖ **Derivative of first pharyngeal arch----->**Mylohyoid
- ❖ **Strongest inhibitory signals in CNS come from neurons----->**Purkinje cells of cerebellum
- ❖ **fibrocartilage----->**contains an amorphous substance
- ❖ **Active thyroid hormone is----->**T3



- ✓ Now you can join us Online for MD/MS & Fcps Preparation
- ✓ Complete course in 2months including Past paper discussion
- ✓ Join from anywhere using mobile/laptop using internet
- ✓ 100% feasible with job and 100% time adjustment for students
- ✓ www.fcpsworld.com or Contact: 03129684658
- ✓ Hostel Facility is also available (for those who want to join physical classes)



- ❖ **Pt. 13 seconds, bt 8 minutes, apt 61 seconds, defect lies in----->Intrinsic pathway**
- ❖ **FFP (fresh frozen plasma) is treatment of choice for----->Warfarin toxicity**
- ❖ **diagnose Beta hemolyticus can be by----->Blood culture**
- ❖ **after operation there is abdominal distension and low bp cause----->Hemorrhagic shock**
- ❖ **structure has pseudostratified epithelium with simple tubular glands that invade stroma----->Prostate**
- ❖ **bone matrix produced by ----->Osteoid**
- ❖ **Forceps delivery newborn has weak abduction. area damaged----->Upper trunk of brachial plexus**
- ❖ **Type of hypersensitivity reaction of myasthenia gravis is----->Type 2**
- ❖ **Outermost layer of retina----->Retinal pigment epithelium**
- ❖ **Prosopagnosia is inability to----->Recognize faces**
- ❖ **hx of bone pain. Serum show monoclonal bands. Diagnosis----->Multiple myeloma**
- ❖ **pt with +ve antimitochondrial antibodies. Diagnosis is----->Primary biliary cirrhosis**



- ✓ Now you can join us Online for MD/MS & Fcps Preparation
- ✓ Complete course in 2months including Past paper discussion
- ✓ Join from anywhere using mobile/laptop using internet
- ✓ 100% feasible with job and 100% time adjustment for students
- ✓ www.fcpsworld.com or Contact: 03129684658
- ✓ Hostel Facility is also available (for those who want to join physical classes)



- ❖ burn pt is prone to non bacterial infection----->Candida
- ❖ Benign tumour----->Warthin tumour
- ❖ Levator anni nerve supply----->Pudendal nerve
- ❖ Heparin exerts its action by----->By potentiating action of anti-throma
- ❖ Carbon dioxide is mostly presented in body in form-----> Bicarbonate
- ❖ Sub capsular sinus lymphatics are----->Lymph node
- ❖ Renal column contains----->Interlobular artery
- ❖ pyelonephritis commonly caused by----->E-coli
- ❖ Shortest pre erythrocytic phase----->P. Falciparum
- ❖ Decrease lymphatic flow due to rise in----->capillary oncotic pressure
- ❖ Apex of heart is located----->5th ICS clavicular line
- ❖ Ca ovary marker----->Ca-125
- ❖ Clavulanic + amoxicillin due to-----> beta lactamases
- ❖ Botulinum toxin acts on----->Snap 25
- ❖ Median nerve damaged at wrist there is loss of----->Opposition
- ❖ cyanotic heart disease----->TOP
- ❖ BT increased, PT normal APTT normal----->ITP



- ✓ Now you can join us Online for MD/MS & Fcps Preparation
- ✓ Complete course in 2months including Past paper discussion
- ✓ Join from anywhere using mobile/laptop using internet
- ✓ 100% feasible with job and 100% time adjustment for students
- ✓ www.fcpsworld.com or Contact: 03129684658
- ✓ Hostel Facility is also available (for those who want to join physical classes)



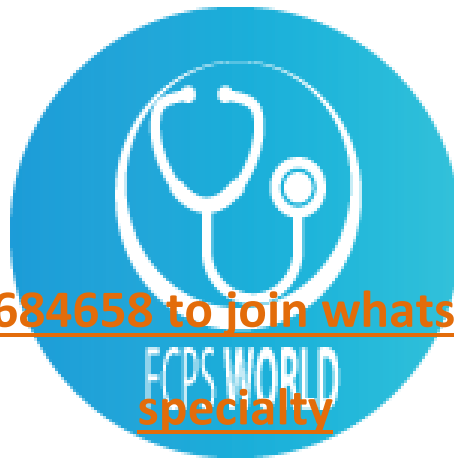
- ❖ **Tractus solitarius is formed by----->2nd order neuron**
- ❖ **Individual muscle fiber covered by----->Endomysium**
- ❖ **normal sperm count with azoospermia. Problem in----->Sertoli cells**
- ❖ **Middle meningeal artery is a branch----->Maxillary artery**
- ❖ **water intoxication will have----->Slow pulse (As the condition persists, papillary and vital signs may result including bradycardia and widened pulse pressure. The cells in the brain may swell to the point where blood flow is interrupted resulting in cerebral edema)**
- ❖ **site for ca prostate metastasis----->Vertebra**
- ❖ **cause of hepatic adenoma.----->Steroids (Anabolic steroid abuse is common among athletes and is associated with a number of medical complications[1–3]. Reported hepatic complications include cholestasis, elevation of aminotransferases, jaundice, benign hepatic adenomas, and rare cases of hepatocellular carcinoma)**
- ❖ **loss of flexion and supination hx of forceps delivery. Injury is at----->Upper trunk of brachial plexus**
- ❖ **Pinworm infection in human istransmitted by----->Ingestion of eggs**
- ❖ **Nerve supply of sternohyoid muscle is----->Ansa cervical**
- ❖ **muscle in neck----->Sclaneus anterior**



- ✓ Now you can join us Online for MD/MS & Fcps Preparation
- ✓ Complete course in 2months including Past paper discussion
- ✓ Join from anywhere using mobile/laptop using internet
- ✓ 100% feasible with job and 100% time adjustment for students
- ✓ www.fcpsworld.com or Contact: 03129684658
- ✓ Hostel Facility is also available (for those who want to join physical classes)



- ❖ **hx of numbness. MCV 120 deficiency is of----->Vitamin B12 deficiency**
- ❖ **Femoral sheath formed by----->Fascia iliac and Fascia transversals**
- ❖ **Dribbling of urine from umbilicus dueto----->Urachus**
- ❖ **pt normal, Aptt raised. Deficiency is of----->Factor 9**
- ❖ **Regarding S2 sound----->Has higher frequency than S1**
- ❖ **exudate contain----->many inflammatory cells**



Whatsapp 03129684658 to join whatsapp group of your specialty



- ✓ Now you can join us Online for MD/MS & Fcps Preparation
- ✓ Complete course in 2months including Past paper discussion
- ✓ Join from anywhere using mobile/laptop using internet
- ✓ 100% feasible with job and 100% time adjustment for students
- ✓ www.fcpsworld.com or Contact: 03129684658
- ✓ Hostel Facility is also available (for those who want to join physical classes)

Www.Fcpsworld.com (Institute for Fcps & Md/Ms)

GOLD STANDRD OF MD/MS & FCPSBuy All past papers GoldStandard FCPS order at: 03100220370

www.facebook.com/FcpsWorld

www.facebook.com/GynaeObsWorld

www.facebook.com/Ophtworld



FCPS-1 ONLINE COURSE

Join FcpsWorld Online preparation courses and clear exam in 1st Attempt.

WWW.FCPSWORLD.COM



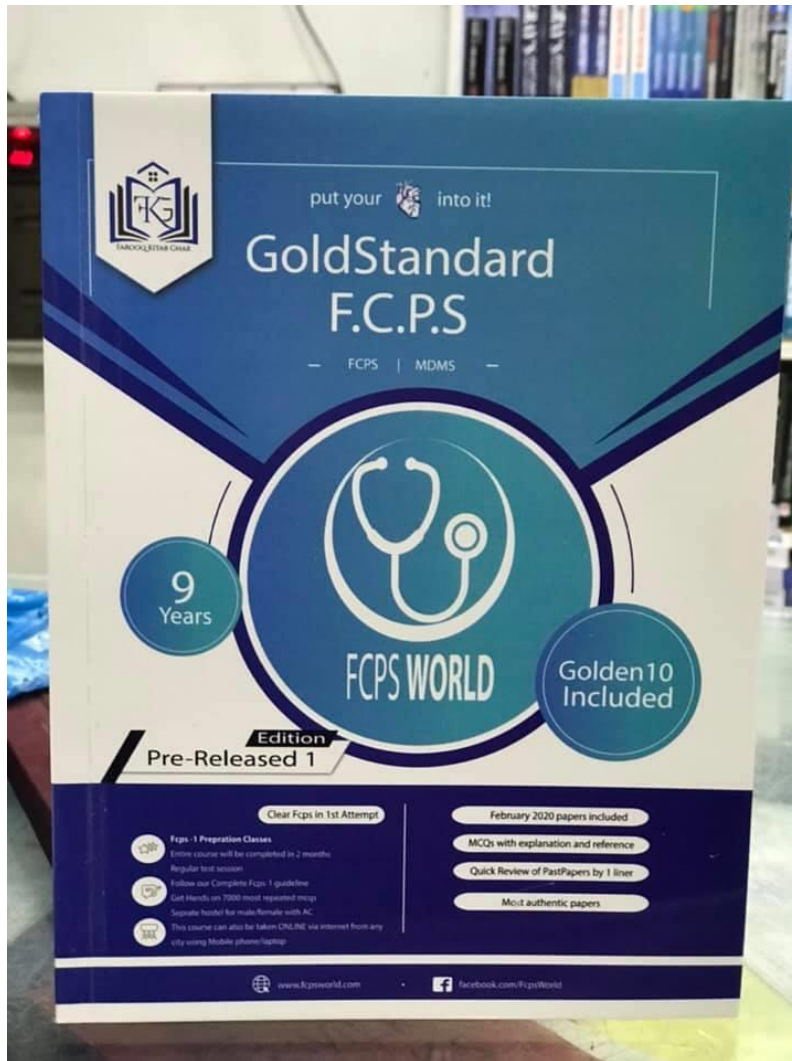
Fcpsworld



www.fcpsworld.com



- ✓ Now you can join us Online for MD/MS & Fcps Preparation
- ✓ Complete course in 2months including Past paper discussion
- ✓ Join from anywhere using mobile/laptop using internet
- ✓ 100% feasible with job and 100% time adjustment for students
- ✓ www.fcpsworld.com or Contact: 03129684658
- ✓ Hostel Facility is also available (for those who want to join physical classes)



GoldStandard **FCPS**

✓ Feb 2020 papers (recent updated)

✓ Authentic most repeated papers.

✓ MCQs with explanation and reference.

✓ 1 liner for rapid revision. **(Cram them)**

✓ Mcqs with explanation and Ref.

✓ Clear FCPS-1 in 1st Attempt (Dont miss chance)

✓ Free Cash on DeliveryOrder at 03100220370



- ✓ Now you can join us Online for MD/MS & Fcps Preparation
- ✓ Complete course in 2months including Past paper discussion
- ✓ Join from anywhere using mobile/laptop using internet
- ✓ 100% feasible with job and 100% time adjustment for students
- ✓ www.fcpsworld.com or Contact: 03129684658
- ✓ Hostel Facility is also available (for those who want to join physical classes)