



Www.Fcpsworld.com (Institute for Fcps & Md/Ms)

GOLD STANDRD OF MD/MS & FCPS

www.facebook.com/FcpsWorld

www.facebook.com/GynaeObsWorld

Discussion Group: <https://t.me/joinchat/O3CE908hoFz1gM9no9Gndw>



www.FCPSWORLD.com

Errata:

SK Medicine and Allied (Golden 1 to 8)

Part 1 of 1

- ✓ Join Fcps-1 online preparation classes (Live Classes) and clear exam in 1st attempt
- ✓ Live interactive sessions with complete theory and past papers discussion
- ✓ Complete course in 2months including Past paper discussion
- Join from anywhere using mobile/laptop using internet
- ✓ 100% feasible with job and 100% time adjustment for students
- ✓ www.fcpsworld.com or Contact: 03129684658
- ✓ Hostel Facility is also available





Www.Fcpsworld.com (Institute for Fcps & Md/MS)

GOLD STANDRD OF MD/MS & FCPS

www.facebook.com/FcpsWorld

www.facebook.com/GynaeObsWorld

Discussion Group: <https://t.me/joinchat/O3CE908hoFz1gM9no9Gndw>



GOLDEN 1

Page	Mcq	Answer
10	211	Vocal Cords Approximate first then Larynx
11	235	Kaposi Sarcoma
12	278	Atrial Systole
13	313	Non-Caseatmg Granuloma
16	353	Dysdiadochokinesia
16	395	Vocal Cords Approximate first then Larynx
18	445	Biliary Atresia
18	450	270-degtee Counter dockwise



Poge	Mcq's	Answer
27	106	CMI>IDA
35	91	C
35	93	B
43	72	B
47	161	RBCs only

- ✓ Join Fcps-1 online preparation classes (Live Classes) and clear exam in 1st attempt
- ✓ Live interactive sessions with complete theory and past papers discussion
- ✓ Complete course in 2months including Past paper discussion

Join from anywhere using mobile/laptop using internet

- ✓ 100% feasible with job and 100% time adjustment for students
- ✓ www.fcpsworld.com or Contact: 03129684658
- ✓ Hostel Facility is also available





Www.Fcpsworld.com (Institute for Fcps & Md/Ms)

GOLD STANDRD OF MD/MS & FCPS

www.facebook.com/FcpsWorld

www.facebook.com/GynaeObsWorld

Discussion Group: <https://t.me/joinchat/O3CE908hoFz1gM9no9Gndw>



52	83	Add: Pre-Formed AB s (Ref: First Aid Edition 2019 Page 119/
53	110	B Aspirin overdose=Alkalosis Earliest Manifestation is Tinnitus
56	174	C
63	116	Add:AFB Diagnostic is Biopsy
69	63	B
72	139	A
75	55	TCA at Theroeutic dose leads to Hypotension At Toxic dose causes Tonic Clonic Seizures
75	57	Add: Alkalosis
76	95	Add: Mossnre Pulmonary Embolism



page	Mcq's	Answer
83	65	Add: It inhibits GnRH
84	90	A
85	93	A
90	8	B

- ✓ Join Fcps-1 online preparation classes (Live Classes) and clear exam in 1st attempt
- ✓ Live interactive sessions with complete theory and past papers discussion
- ✓ Complete course in 2months including Past paper discussion
- Join from anywhere using mobile/laptop using internet
- ✓ 100% feasible with job and 100% time adjustment for students
- ✓ www.fcpsworld.com or Contact: 03129684658
- ✓ Hostel Facility is also available





Www.Fcpsworld.com (Institute for Fcps & Md/Ms)

GOLD STANDRD OF MD/MS & FCPS

www.facebook.com/FcpsWorld

www.facebook.com/GynaeObsWorld

Discussion Group: <https://t.me/joinchat/O3CE908hoFz1gM9no9Gndw>



98	12	B
100	32	C
104	i	E
107	61	A
109	90	C
113	47	Add: AFB
115	95	B
118	28	A
126	12	E
136	159	A
138	194	Add: 25 Years (Re/: Siyapa Session)
140	30	Add: Sporotrichosis (Rose Handlers Dis)
142	53	B (After 10 years Skin Malignancy * Overall
142	62	A
143	77	D
144	86	C (Ref: Davidson)
146	115	B
146	116	B
151	177	C
152	22	Add: Problem In the Hypothalamus
153	63	Dysdiodochokinesio
153	83	Adult Females: Oestrogen only
155	30	E
158	78	B

- ✓ Join Fcps-1 online preparation classes (Live Classes) and clear exam in 1st attempt
- ✓ Live interactive sessions with complete theory and past papers discussion
- ✓ Complete course in 2months including Past paper discussion
- Join from anywhere using mobile/laptop using internet
- ✓ 100% feasible with job and 100% time adjustment for students
- ✓ www.fcpsworld.com or Contact: 03129684658
- ✓ Hostel Facility is also available





Www.Fcpsworld.com (Institute for Fcps & Md/Ms)

GOLD STANDRD OF MD/MS & FCPS

www.facebook.com/FcpsWorld

www.facebook.com/GynaeObsWorld

Discussion Group: <https://t.me/joinchat/O3CE908hoFz1gM9no9Gndw>



GOLDEN 4

Page	Mcq s	Answer
159	10	A (Ref Katiung, Goodman)
160	19	A
166	16	A (Ref: Katiung, Goodman)
167	24	Add: Radon Exposure
168	50	Pre Formed Ab S
170	86	B
176	30	A
176	31	A
187	16	Add: PONS (Mid Pontine Lesion)
192	128	B
193	142	B
197	58	B
202	21	Add: Increase Intracellular Calcium
211	179	Add: Pen Tubular Capillaries
212	11	B

- ✓ Join Fcps-1 online preparation classes (Live Classes) and clear exam in 1st attempt
- ✓ Live interactive sessions with complete theory and past papers discussion
- ✓ Complete course in 2months including Past paper discussion
- Join from anywhere using mobile/laptop using internet
- ✓ 100% feasible with job and 100% time adjustment for students
- ✓ www.fcpsworld.com or Contact: 03129684658
- ✓ Hostel Facility is also available





Www.Fcpsworld.com (Institute for Fcps & Md/Ms)

GOLD STANDRD OF MD/MS & FCPS

www.facebook.com/FcpsWorld

www.facebook.com/GynaeObsWorld

Discussion Group: <https://t.me/joinchat/O3CE908hoFz1gM9no9Gndw>



212	18	A
213	31	E
213	33	Add: Septic Shock
215	72	Add: End Arteritis Obhterans
218	155	Diuretics
219	12	Add: Hypotension at Therapeutic dose
219	9	A
219	14	Add: Right Upper Lobe
224	85	C
227	132	B
227	145	C
228	160	B
229	164	A



GOLDEN 5

Page	Mcq's	Answer
740	175	Ceftriaxone is the drug of choice
240	186	A (AB negative Is universal donor)

- ✓ Join Fcps-1 online preparation classes (Live Classes) and clear exam in 1st attempt
- ✓ Live interactive sessions with complete theory and past papers discussion
- ✓ Complete course in 2months including Past paper discussion
- Join from anywhere using mobile/laptop using internet
- ✓ 100% feasible with job and 100% time adjustment for students
- ✓ www.fcpsworld.com or Contact: 03129684658
- ✓ Hostel Facility is also available





Www.Fcpsworld.com (Institute for Fcps & Md/Ms)

GOLD STANDRD OF MD/MS & FCPS

www.facebook.com/FcpsWorld

www.facebook.com/GynaeObsWorld

Discussion Group: <https://t.me/joinchat/O3CE908hoFz1gM9no9Gndw>



242	21	Add: Mathimoiole
256	48	fl
259	96	Staph Aureus
260	130	0
266	85	Add: AFB Diagnostic Is Biopsy
266	91	B
273	63	C (Ref: Guyton)
276	105	Azithromycin (if RTt is not mentioned then Ciprofloxacin)
291	7	Hypersensitivity Reaction Type IV
284	56	Add: Jejunum (Ref: Bailey)
286	99	B
293	101	C
293	99	Add: Ask the patient what kind of bed problem they are having (Ref: Behaviour Science Sixth Edition Mcq)
296	153	A
305	86	Cell: WBC Tissue: Bone Marrow Site: Buccal Mucosa
316	46	Add: Exercising Muscle
323	48	Add: Pleuroperitoneal Membrane Defect

- ✓ Join Fcps-1 online preparation classes (Live Classes) and clear exam in 1st attempt
- ✓ Live interactive sessions with complete theory and past papers discussion
- ✓ Complete course in 2months including Past paper discussion
- Join from anywhere using mobile/laptop using internet
- ✓ 100% feasible with job and 100% time adjustment for students
- ✓ www.fcpsworld.com or Contact: 03129684658
- ✓ Hostel Facility is also available





Www.Fcpsworld.com (Institute for Fcps & Md/Ms)

GOLD STANDRD OF MD/MS & FCPS

www.facebook.com/FcpsWorld

www.facebook.com/GynaeObsWorld

Discussion Group: <https://t.me/joinchat/O3CE908hoFz1gM9no9Gndw>



323	51	Add: Pulmonary Embolism
-----	----	-------------------------

GOLDEN 6

Page	Meg's	Answer
330	76	Add: Have little effect on Peristalsis
332	112	E (Weber Syndrome)
333	130	A
334	17	a Most Common premolignont lesion is Leukoplakia Most Lethal premolignont lesion Is Etythroplakia Most Common premallanont condition is Submucous Fibrosis Most Lethal premohanant condition is Lichen Planus
335	37	B
340	162	C (Massive Transfusion leads to Hyperkalemio)
342	17	A

- ✓ Join Fcps-1 online preparation classes (Live Classes) and clear exam in 1st attempt
- ✓ Live interactive sessions with complete theory and past papers discussion
- ✓ Complete course in 2months including Past paper discussion
- Join from anywhere using mobile/laptop using internet
- ✓ 100% feasible with job and 100% time adjustment for students
- ✓ www.fcpsworld.com or Contact: 03129684658
- ✓ Hostel Facility is also available





Www.Fcpsworld.com (Institute for Fcps & Md/Ms)

GOLD STANDRD OF MD/MS & FCPS

www.facebook.com/FcpsWorld

www.facebook.com/GynaeObsWorld

Discussion Group: <https://t.me/joinchat/O3CE908hoFz1gM9no9Gndw>



344	45	B
349	124	B (Ref: Snell)
350	16	In Acute: Sulfosolozine in Chronic: //V Corticosteroids
355	94	B
355	100	B
358	135	infants. 70-75% Adults: 60-65%
362	16	B
364	67	Add: Ask the patient what kind of bed problem they are having (Ref: Behaviour Science Sixth Edition Mcq)
365	82	A
365	88	C (Ref: First Aid)
372	54	B (Carbohydrate 50-55%. Protein 10-25%. Fat 25-30%)
377	145	A
332	49	C
385	9	A (Ref: Davidson)
388	45	B
390	77	B
390	79	A

390	80	A
391	91	B
393	10	A

- ✓ Join Fcps-1 online preparation classes (Live Classes) and clear exam in 1st attempt
- ✓ Live interactive sessions with complete theory and past papers discussion
- ✓ Complete course in 2 months including Past paper discussion
- Join from anywhere using mobile/laptop using internet
- ✓ 100% feasible with job and 100% time adjustment for students
- ✓ www.fcpsworld.com or Contact: 03129684658
- ✓ Hostel Facility is also available





Www.Fcpsworld.com (Institute for Fcps & Md/Ms)

GOLD STANDRD OF MD/MS & FCPS

www.facebook.com/FcpsWorld

www.facebook.com/GynaeObsWorld

Discussion Group: <https://t.me/joinchat/O3CE908hoFz1gM9no9Gndw>



393	12	B
395	51	Add: Decrease as Collide pressure increase along capillary
396	73	Add: Vocal Cords Approximate first then Larynx moved upward
396	78	Add: Folote Factor involve in 1 carbon transfer* Folate
397	101	Add: Oysdladochoklnesia
406	76	A
406	83	Add: Dysdiadochokinesio
40?	100	Staph Aureus



Page	Mcq's	Answer
411	20	A
422	193	E (Large DMxHigh permeability of Gap Junctions>High no of No chonnels>less no of myofibrils>Short refractory period)
444	140	A
444	152	D (BRS Physiology Chapter 6 Meg Number 16)
451	63	C
451	77	B
452	93	A (Anemia of Chronic Disease)
453	107	C
454	121	D

- ✓ Join Fcps-1 online preparation classes (Live Classes) and clear exam in 1st attempt
- ✓ Live interactive sessions with complete theory and past papers discussion
- ✓ Complete course in 2months including Past paper discussion
- Join from anywhere using mobile/laptop using internet
- ✓ 100% feasible with job and 100% time adjustment for students
- ✓ www.fcpsworld.com or Contact: 03129684658
- ✓ Hostel Facility is also available





Www.Fcpsworld.com (Institute for Fcps & Md/Ms)

GOLD STANDRD OF MD/MS & FCPS

www.facebook.com/FcpsWorld

www.facebook.com/GynaeObsWorld

Discussion Group: <https://t.me/joinchat/O3CE908hoFz1gM9no9Gndw>



465	107	Add: EMG
465	117	B (Ref: Snell ICf* Edition)
469	5	0
470	24	F (large DM>High permeability of Gap Junctions>High no of Na channels>less no of myofibrils>Short refractory period)
472	54	Add: Internal Capsule
476	125	Add: Slow Ejection Phase
477	127	A
477	128	Add: i/V Salbutamol or I/V Corticosteroids
477	130	B
480	1	B
481	26	Sporotrichosis (Rose Handlers Disease)
492	40	A (Cejtrlaxone or Cefotaxime)
484	68	B (Ref: Bolley)
486	98	C (Ref : First Aid) Most common site and in Supine position Apical segment of Right Lower lobe
487	120	A
488	137	CMLXDA

- ✓ Join Fcps-1 online preparation classes (Live Classes) and clear exam in 1st attempt
- ✓ Live interactive sessions with complete theory and past papers discussion
- ✓ Complete course in 2months including Past paper discussion
- Join from anywhere using mobile/laptop using internet
- ✓ 100% feasible with job and 100% time adjustment for students
- ✓ www.fcpsworld.com or Contact: 03129684658
- ✓ Hostel Facility is also available





Www.Fcpsworld.com (Institute for Fcps & Md/Ms)

GOLD STANDRD OF MD/MS & FCPS

www.facebook.com/FcpsWorld

www.facebook.com/GynaeObsWorld

Discussion Group: <https://t.me/joinchat/O3CE908hoFz1gM9no9Gndw>



489	149	B (BRS Physiology Chapter 6 Mcq Number 16)
490	163	A



Poge	Mcq's	Answer
496	61	C (Ref: Bailey)
498	93	D

- ✓ Join Fcps-1 online preparation classes (Live Classes) and clear exam in 1st attempt
- ✓ Live interactive sessions with complete theory and past papers discussion
- ✓ Complete course in 2months including Past paper discussion

Join from anywhere using mobile/laptop using internet

- ✓ 100% feasible with job and 100% time adjustment for students
- ✓ www.fcpsworld.com or Contact: 03129684658
- ✓ Hostel Facility is also available





Www.Fcpsworld.com (Institute for Fcps & Md/Ms)

GOLD STANDRD OF MD/MS & FCPS

www.facebook.com/FcpsWorld

www.facebook.com/GynaeObsWorld

Discussion Group: <https://t.me/joinchat/O3CE908hoFz1gM9no9Gndw>



498	97	<i>None</i> <i>When Gerota's Fascia is intact Blood stays in the capsule or can go to inferior pelvis</i> <i>When Gerota's Fascia is ruptured Blood can go to another kidney</i>
501	143	<i>D</i>
506	24	<i>C (Ref: First Aid)</i> <i>Most common site and in Supine position Apical segment of Right Lower Lobe</i> <i>While standing or sitting position Posterior segment of Right lower Lobe</i> <i>While on right side Posterior segment of Right Upper lobe</i>
509	59	<i>C (because only 1 artery is involved)</i>
510	66	<i>A (Ref: Robbins)</i>

- ✓ Join Fcps-1 online preparation classes (Live Classes) and clear exam in 1st attempt
- ✓ Live interactive sessions with complete theory and past papers discussion
- ✓ Complete course in 2 months including Past paper discussion
- Join from anywhere using mobile/laptop using internet
- ✓ 100% feasible with job and 100% time adjustment for students
- ✓ www.fcpsworld.com or Contact: 03129684658
- ✓ Hostel Facility is also available





Www.Fcpsworld.com (Institute for Fcps & Md/Ms)

GOLD STANDRD OF MD/MS & FCPS

www.facebook.com/FcpsWorld

www.facebook.com/GynaeObsWorld

Discussion Group: <https://t.me/joinchat/O3CE908hoFz1gM9no9Gndw>



518	162	A <i>TCA at Therapeutic dose leads to Hypotension At Toxic dose causes Tonic Clonic Seizures</i>
520	31	C (Ref: Bailey)
521	40	A
523	64	B
525	95	Add: Ask the patient what land of bed problem they are having (Ref: Behaviour Science Sixth Edition Meg)
527	32	C
530	93	C

- ✓ Join Fcps-1 online preparation classes (Live Classes) and clear exam in 1st attempt
- ✓ Live interactive sessions with complete theory and past papers discussion
- ✓ Complete course in 2months including Past paper discussion

Join from anywhere using mobile/laptop using internet

- ✓ 100% feasible with job and 100% time adjustment for students
- ✓ www.fcpsworld.com or Contact: 03129684658
- ✓ Hostel Facility is also available





Www.Fcpsworld.com (Institute for Fcps & Md/Ms)

GOLD STANDRD OF MD/MS & FCPS

www.facebook.com/FcpsWorld

www.facebook.com/GynaeObsWorld

Discussion Group: <https://t.me/joinchat/O3CE908hoFz1gM9no9Gndw>



532	123	Add: Serum Vitamin B12
532	131	Add: Anemia Anemia Secondary Bacterial Infection>MDR TB
533	138	Add: Folate Factor involve in 1 carbon transfer* Folate A factor which is precursor to the carrier of 1 carbon
534	9	Add: TB
535	19	Pulmonary valve open at 8mmHG
536	99	Add: Sigmoid Sinus
530	151	Progesterone maintains Endometrial thickness or proliferation of Endometrium (Ref: Guyton, BRS Physiology, First Aid)

- ✓ Join Fcps-1 online preparation classes (Live Classes) and clear exam in 1st attempt
- ✓ Live interactive sessions with complete theory and past papers discussion
- ✓ Complete course in 2months including Past paper discussion

Join from anywhere using mobile/laptop using internet

- ✓ 100% feasible with job and 100% time adjustment for students
- ✓ www.fcpsworld.com or Contact: 03129684658
- ✓ Hostel Facility is also available





Www.Fcpsworld.com (Institute for Fcps & Md/Ms)

GOLD STANDRD OF MD/MS & FCPS

www.facebook.com/FcpsWorld

www.facebook.com/GynaeObsWorld

Discussion Group: <https://t.me/joinchat/O3CE908hoFz1gM9no9Gndw>



540	35	B
540	38	B
542	71	Opalescent > Straw Color (In Acute Bacterial Meningitis Turbid Color)
544	109	HTN * Hypokalemia
544	110	Add: Folate Factor involve in 1 carbon transfer* Folate A factor which is precursor to the carrier of 1 carbon
553	97	B
553	127	Add: Apoptosis

- ✓ Join Fcps-1 online preparation classes (Live Classes) and clear exam in 1st attempt
- ✓ Live interactive sessions with complete theory and past papers discussion
- ✓ Complete course in 2months including Past paper discussion

Join from anywhere using mobile/laptop using internet

- ✓ 100% feasible with job and 100% time adjustment for students
- ✓ www.fcpsworld.com or Contact: 03129684658
- ✓ Hostel Facility is also available





Www.Fcpsworld.com (Institute for Fcps & Md/Ms)

GOLD STANDRD OF MD/MS & FCPS

www.facebook.com/FcpsWorld

www.facebook.com/GynaeObsWorld

Discussion Group: <https://t.me/joinchat/O3CE908hoFz1gM9no9Gndw>



554	143	Add: Reduces Resistance
554	150	Add: External Jugular Vein
554	19	Add: Ketorolac Acid
554	174	Opalescent > Straw Color (in Acute Bacterial Meningitis Turbid Color)



- ✓ Join Fcps-1 online preparation classes (Live Classes) and clear exam in 1st attempt
- ✓ Live interactive sessions with complete theory and past papers discussion
- ✓ Complete course in 2months including Past paper discussion
- Join from anywhere using mobile/laptop using internet
- ✓ 100% feasible with job and 100% time adjustment for students
- ✓ www.fcpsworld.com or Contact: 03129684658
- ✓ Hostel Facility is also available





Www.Fcpsworld.com (Institute for Fcps & Md/Ms)

GOLD STANDRD OF MD/MS & FCPS

www.facebook.com/FcpsWorld

www.facebook.com/GynaeObsWorld

Discussion Group: <https://t.me/joinchat/O3CE908hoFz1gM9no9Gndw>



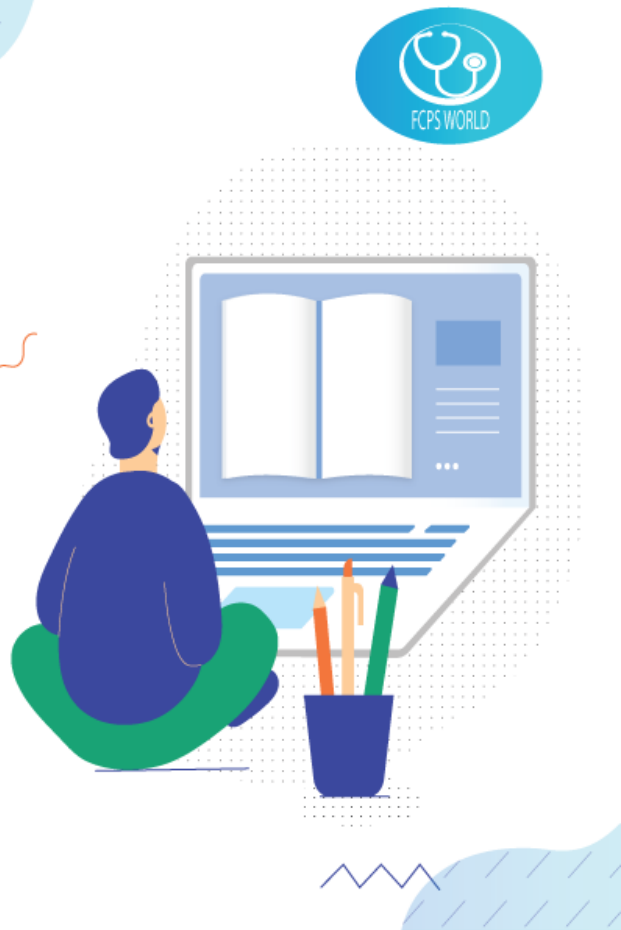
FCPS-1 ONLINE COURSE

Join FcpsWorld Online preparation courses and clear exam in 1st Attempt.

WWW.FCPSWORLD.COM

 Fcpsworld

 www.fcpsworld.com



- ✓ Join Fcps-1 online preparation classes (Live Classes) and clear exam in 1st attempt
- ✓ Live interactive sessions with complete theory and past papers discussion
- ✓ Complete course in 2months including Past paper discussion

Join from anywhere using mobile/laptop using internet

- ✓ 100% feasible with job and 100% time adjustment for students
- ✓ www.fcpsworld.com or Contact: 03129684658
- ✓ Hostel Facility is also available





Www.Fcpsworld.com (Institute for Fcps & Md/Ms)

GOLD STANDRD OF MD/MS & FCPS

www.facebook.com/FcpsWorld

www.facebook.com/GynaeObsWorld

Discussion Group: <https://t.me/joinchat/O3CE908hoFz1gM9no9Gndw>



FcpsWorld Facebook Group: <https://www.facebook.com/groups/368409263806653/>

Help Others & Get helped! Join our Whatsapp groups

Join our telegram (playstore app) group for Fcps preparation (all questions will be answered here):

Link: <https://t.me/joinchat/O3CE908hoFz1gM9no9Gndw>

Fcps Anesthesia <https://chat.whatsapp.com/GLGfqpdQkCOAtMEGvXSoJe>

Jcat MD/MS: <https://chat.whatsapp.com/C1nJ5LWhqfu6odqN2KJFYu>

Fcps Pathology: <https://chat.whatsapp.com/FpKUhYPA70gG2LJ4S7rZje>

Fcps gynae: <https://chat.whatsapp.com/Dhq6aYOqkg0Cq0Zmd3TjRX>

Fcps Surgery: <https://chat.whatsapp.com/HVD0Lkm9UocKZOG6iapxJX>

Fcps medicine: <https://chat.whatsapp.com/HepCEF5LLxy9dApKph1RVf>

Fcps psychiatry: <https://chat.whatsapp.com/DI0GUB1nFcv7pdYPjoaS6E>

Fcps radiology: <https://chat.whatsapp.com/G8p196qrHI9K7yiRO5Ydk7>

Fcps ophthalmology: <https://chat.whatsapp.com/IHdAoIN1MctldQ9NRTIE9A>

- ✓ Join Fcps-1 online preparation classes (Live Classes) and clear exam in 1st attempt
- ✓ Live interactive sessions with complete theory and past papers discussion
- ✓ Complete course in 2months including Past paper discussion

Join from anywhere using mobile/laptop using internet

- ✓ 100% feasible with job and 100% time adjustment for students
- ✓ www.fcpsworld.com or Contact: 03129684658
- ✓ Hostel Facility is also available

