



www.FCPSWORLD.com

GoldStandard FCPS:

Medicine & Allied

6th July 2020 Afternoon

- ✓ Clear FCPS-1 in **FIRST ATTEMPT**
- ✓ Entire course will be completed in 2 months.
- ✓ Live lectures via video Portal
- ✓ Daily Test session (Test discussion will be on Via Portal)
- ✓ Follow our complete guideline for FCPS-1
- ✓ Get Hands on 20,000 CPSP question (most of them repeat)
- ✓ Free study material, whatsapp group (only for our students)
- ✓ Don't Miss the chance. **(LIMITED SEATS AVAILABLE.)**
- ✓ WWW.FCPSWORLD.com
- ✓ WWW.facebook.com/fcpsworld
- ✓ For Details Phone# 03129684658



- ✓ Now you can join us Online for MD/MS & Fcps Preparation
- ✓ Complete course in 2months including Past paper discussion
- ✓ Join from anywhere using mobile/laptop using internet
- ✓ 100% feasible with job and 100% time adjustment for students
- ✓ www.fcpsworld.com or Contact: 03129684658
- ✓ Hostel Facility is also available (for those who want to join physical classes)



(Errors and omissions excepted)

Cram Statements

- ❖ **Medial relation of thyroid is----->RLN**
- ❖ **Satiety center is----->Medial part of hypothalamus (The three parts of the hypothalamus that regulate food intake are called the ventromedial nuclei, the lateral hypothalamic area, and the arcuate nucleus. The ventromedial nuclei is the satiety center, and when stimulated, it causes the sensation of fullness)**
- ❖ **Middle cerebral artery supply----->Cortex of insula**
- ❖ **Left border of heart is formed by----->Left ventricle**
- ❖ **Compliance of lung is directly proportional to----->Elastic recoil of lung**
- ❖ **Death due to food poisoning----->Clostridium Botulinum**
- ❖ **Cytokeratin is a type of----->Intermediate filaments**
- ❖ **At apex of lung----->Inc. V/Q**
- ❖ **brush border enzyme for carbohydrate is----->Lactase**
- ❖ **Calcium is released by tumor of which organ----->Thyroid**
- ❖ **Cytokeratin is used for----->Intermediate filaments**
- ❖ **Conducting system of heart is present in----->Sub Endocardium**
- ❖ **Gastric secretion is mediated by----->H1 receptor**
- ❖ **pancytopenia and lymphocytes 90% investigation of choice-----> Bone marrow biopsy**
- ❖ **branch of subclavian Artery make anastomosis on shoulder----->Dorsal scapular artery**



- ✓ Now you can join us Online for MD/MS & Fcps Preparation
- ✓ Complete course in 2months including Past paper discussion
- ✓ Join from anywhere using mobile/laptop using internet
- ✓ 100% feasible with job and 100% time adjustment for students
- ✓ www.fcpsworld.com or Contact: 03129684658
- ✓ Hostel Facility is also available (for those who want to join physical classes)



- ❖ **high transmissibility is of----->measles**
- ❖ **Drug that increases heart rate on normal doses----->Isosorbide dinitrate**
- ❖ **Contraindication of anticoagulants----->cerebral infarct / hemorrhage**
- ❖ **Foot drop is due to----->common peroneal nerve, deep peroneal nerve branch of siatic N**
- ❖ **raised in malignant hyperthermia----->Ca+**
- ❖ **Arterial supply of 1st portion of duodenum----->Superior pancreaticoduodenal**
- ❖ **Renal blood flow determined by----->PAH**
- ❖ **example of Short acting benzodiazepine is----->Midazolam**
- ❖ **ECG shows low amplitude T-wave----->Hypo kalaemia**
- ❖ **Upper 1/3rd of medulla contain----->interior olivary nuclcus**
- ❖ **Smooth muscle cause----->Slow & sustained contraction**
- ❖ **Anterior cumcate ligament daman displacement of Tibia on femur----->Anteriomedial**
- ❖ **Epicardium is supplied by;----->Coronary**
- ❖ **Micturition centre is located in----->midbrain**
- ❖ **Surgical neck fracture of humerus will lead to damage----->Post circumflex humeral artery & axillary- nerve**
- ❖ **Internal body environment maintained by----->Negative feedback**
- ❖ **Feco-oral route----->Hepatitis E**
- ❖ **Short term memory loss is due to damage----->Hippocampus**
- ❖ **in bronchoscopy, firststructure visualized ----->Upper lobe bronchus**



- ✓ Now you can join us Online for MD/MS & Fcps Preparation
- ✓ Complete course in 2months including Past paper discussion
- ✓ Join from anywhere using mobile/laptop using internet
- ✓ 100% feasible with job and 100% time adjustment for students
- ✓ www.fcpsworld.com or Contact: 03129684658
- ✓ Hostel Facility is also available (for those who want to join physical classes)

- ❖ **Coronary blood flow is mainly maintained by-----**>Myocardial O₂ demand
 - ❖ **Climbing purkinji fibers comes from-----**>Medulla
 - ❖ **Hydrocarbon cause-----**>Bladder Ca
 - ❖ **Diagnostic test for diabetic nephropathy-----**>Micro albuminuria
 - ❖ **increasing concentration in loop of Henle is due to-----**>Urea
 - ❖ **Hypospadias defect in-----**>Urogenital Folds
 - ❖ **IHD patient having CLD present with variceal haemorrhage management is-----**
>Oxeriodide
 - ❖ **Needle penetration in intercostal space pierce-----**>Intercostal membrane
 - ❖ **Patient died suddenly due to rupture of aneurysm-----**>Berry' Aneurysm
 - ❖ **During exercise, coronary blood flow is maintained by-----**>Local metabolites
 - ❖ **Haploid number of chromatids is present in-----**>Spermatids
 - ❖ **Reticular fibers are present in-----**>Lymphoid organ
 - ❖ **Premalignant condition of oral cavity-----**>Oral sub mucous fibrosis
 - ❖ **what is toxoid toxin -----**>Tetanus
 - ❖ **Patient has tinnitus, fascial muscle paralysis. Lesion in-----**>Cereberopontine angle
 - ❖ **Most likely finding in chrons disease is-----**>Colonic transmural inflammation
 - ❖ **Anti-anginal drug constipation and edema-----**>Deltaziam
 - ❖ **Anterior cruncate ligament prevent displacement of tibia-----**>Anterior (The ACL functions to prevent posterior translation of the femur on the tibia (or anterior displacement of the tibia) during flexion-extension of the knee.)
- ✓ Now you can join us Online for MD/MS & Fcps Preparation
 - ✓ Complete course in 2months including Past paper discussion
 - ✓ Join from anywhere using mobile/laptop using internet
 - ✓ 100% feasible with job and 100% time adjustment for students
 - ✓ www.fcpsworld.com or Contact: 03129684658
 - ✓ Hostel Facility is also available (for those who want to join physical classes)





- ❖ **Ph 7.1, HCO₃ 17, CO₂ 46 ----->Metabolic Acidosis**
- ❖ **A patient has emphysema Will have-----> Rise in plasma pco₂**
- ❖ **Main target of HTN retinopathy eye is----->Arteriole**
- ❖ **Beta naphthalamine causes----->Urinary bladder cancer**
- ❖ **history of travel from Thailand presented with high grade fever, rigors and muscle aches. ----->Malaria**
- ❖ **A girl with presented to ER with allergic following bees sting, most probably due to----->Histamine**
- ❖ **acute respiratory acidosis show----->Decrease PH, increase PCO₂ and normal HCO₃**
- ❖ **nausea, dry mucous membrane, hyperostosis, defi of----->Vit-A deficiency**
- ❖ **Testosterone lowest in age ----->Preschool**
- ❖ **Vertebra is held In place by----->Anterior & posterior ligament**
- ❖ **blow on the lateral side of face resulting in loss of tear production. Nerve injured is----->Greater Petrosal nerve**
- ❖ **Dorsal root has type of ganglion----->Pseudounipolar**
- ❖ **Voluntary inhibition of micturition is by----->Increased activity of pudendal nerve**
- ❖ **Wound contraction is due to----->fibroblast**
- ❖ **increase BP andchronically raised rennin----->Sec HTN**
- ❖ **True regarding dorsal column is----->Small receptive field**
- ❖ **Accommodation reflex lost, lesion is in----->Preteectum**
- ❖ **Internal spermatic fascia derived from----->Transverse fascia**
- ❖ **blood volume in 5kg babe----->400 - 450ml**



- ✓ Now you can join us Online for MD/MS & Fcps Preparation
- ✓ Complete course in 2months including Past paper discussion
- ✓ Join from anywhere using mobile/laptop using internet
- ✓ 100% feasible with job and 100% time adjustment for students
- ✓ www.fcpsworld.com or Contact: 03129684658
- ✓ Hostel Facility is also available (for those who want to join physical classes)



- ❖ patient is having bleeding best initial assessment----->Pulse rate
- ❖ prolactin causes inhibition of----->GnRH
- ❖ mediator of pain----->Bradykinin

- ❖ Primary afferent from nociceptor terminates in-----> lamina 1 spinothalamic tract
- ❖ Landmark of neck is by.----->sternocleidomastoid muscle
- ❖ Anterior relation of right kidney----->liver
- ❖ Transitional epithelium derived from----->Endoderm
- ❖ Prolactinoma in female is due to-----> Decrease dopamine from hypothalamus
- ❖ Dvt most common occurs due to ----->Prolonged bed rest
- ❖ Stape is derivative of branchial arch----->2nd
- ❖ Ulnar nerve damage at media epicondyle will result in----->Hypothenar wasting
- ❖ Bifurcation of common carotid artery palpated at----->Upper border of thyroid cartilage
- ❖ Which of the following has highest mineral content----->Tuber

- ❖ Factor 9 deficiency treated with----->FFPs
- ❖ Posterior interventricular is a branch of----->RCA
- ❖ Least dilatable part of urethra----->Membranous part
- ❖ True about hereditary spherocytosis is----->Autosomal dominant
- ❖ Haematocrit in new born----->54%
- ❖ Patient presented with vasculitis and P ANCA positive, cause is----->Hepatitis B



- ✓ Now you can join us Online for MD/MS & Fcps Preparation
- ✓ Complete course in 2months including Past paper discussion
- ✓ Join from anywhere using mobile/laptop using internet
- ✓ 100% feasible with job and 100% time adjustment for students
- ✓ www.fcpsworld.com or Contact: 03129684658
- ✓ Hostel Facility is also available (for those who want to join physical classes)



- ❖ **Most sensitive test for SUE----->ANA**
- ❖ **CO2 transport is an example of----->Negative feed back**
- ❖ **neural tube defects cause----->Folic acid**
- ❖ **Biological substance taken from food is----->Nutrients**
- ❖ **Marathon runner has profusesweating, mental confusion, and then suddenly collapse. Cause----->heart exhausion**
- ❖ **X-Linked Agammaglobinemia in child is----->pyogenic infection**
- ❖ **Bilateral damage to hippocampuscauses----->Loss of ability to convert recent to long term memory**
- ❖ **which of the following organs increase in size in CRF----->Parathyroid gland**
- ❖ **Median umbilical ligament is a remnant of-----> Urachus**
- ❖ **Patient presented after 4 hours of acute chest pain which test most specific----->CK-MB**
- ❖ **Most common cause of graft rejection----->HLA**
- ❖ **Type of epithelium present in stomach -----> Simple columnar epithelium**
- ❖ **Middle cerebellar peduncle contain----->Olivocerebellar**
- ❖ **Hypervitaminosis A cause----->dry skin**
- ❖ **Digoxin toxicity increases due to-----> Hypokalaemia**
- ❖ **Muscarinic cholinergic receptors----->prea-sympathetically cells**
- ❖ **Referral system is defined as-----> Two-way communication**
- ❖ **growth hormone----->is polypeptide**



- ✓ Now you can join us Online for MD/MS & Fcps Preparation
- ✓ Complete course in 2months including Past paper discussion
- ✓ Join from anywhere using mobile/laptop using internet
- ✓ 100% feasible with job and 100% time adjustment for students
- ✓ www.fcpsworld.com or Contact: 03129684658
- ✓ Hostel Facility is also available (for those who want to join physical classes)



- ❖ **Marker used for Total body water----->Antipyrene**
- ❖ **Aortic arch aneurysm will compress -----> Left bronchus**
- ❖ **Pancreatic and calcium secretion increases with----->CCK**
- ❖ **Fisherman has ecchymosis and gums hypertrophy, deficiency----->Vit. C**
- ❖ **Meningitis in 60 years old man is caused by ----->Streptococcal pneumonia**
- ❖ **hemi-section at mid-thoracic will have----->Contralateral loss of pain & temperature**
- ❖ **Fastest nerve conduction----->A alpha**
- ❖ **Most common side effect histamine----->Sedation**
- ❖ **in pancreatitis type of necrosis----->Fat necrosis**
- ❖ **Oath is most important component in----->Medical Ethics**
- ❖ **Awake man with eye close, wave produced on EEG will be----->Alpha**
- ❖ **During hysterectomy, ureter can be damaged at ----->broad ligament**
- ❖ **side effect of IUCD is----->Bleeding**
- ❖ **Increase systolic volume with total peripheral resistance and diastolic pressure constant will cause----->Increase pulse pressure and increase MAP**
- ❖ **Viral disease transmitted bymosquitos is----->Dengue**
- ❖ **Uncoupling of oxidativephosphorylation-----> NE**
- ❖ **transitional CA of bladder cause. -----> Smoking (most common) then plastic**
- ❖ **Diphtheria most lethal effect is on organ----->Heart**
- ❖ **Trachea bifurcates at the level of----->T5**



- ✓ Now you can join us Online for MD/MS & Fcps Preparation
- ✓ Complete course in 2months including Past paper discussion
- ✓ Join from anywhere using mobile/laptop using internet
- ✓ 100% feasible with job and 100% time adjustment for students
- ✓ www.fcpsworld.com or Contact: 03129684658
- ✓ Hostel Facility is also available (for those who want to join physical classes)



- ❖ **Dead space is not effected by----->**shallow breathing
- ❖ **Aneuploidy is caused by----->**change in number with non-disjunction
- ❖ **Hypothalamic hypophyseal portalsystem----->**Adenophysis
- ❖ **in lifting weight Suddenly his arms dropped the weight. Organ of reflex-----**
>Golgi tendon organs
- ❖ **HLA B27 is associated with----->**reiter syndrome
- ❖ **Ca and Po4 balance maintained by----->**PTH
- ❖ **Drug absorption from GIT by simple diffusion depends upon----->**lipid solubility
- ❖ **Langerhans giant cell is----->**Derived from Macrophages
- ❖ **in exercise, the non exercising muscles are provided blood flow because of-----**
>Sympathetic cholinergic
- ❖ **Thyroglobulin released by----->**Papillary Ca
- ❖ **Airbom infection is----->**Anthrax
- ❖ **Loss of motivation and depression. lobe is involved in----->**frontal
- ❖ **will not cause active immunization----->**Anti-toxin
- ❖ **Preinalignant lesion on cheeks which leads to SCC and need excision----->**Actinic Keratosis
- ❖ **Pain & temperature carried by----->** Lateral spinothalamic
- ❖ **70 years old patient presented withrepeated UTI, cause is----->**Outflow obstruction



- ✓ Now you can join us Online for MD/MS & Fcps Preparation
- ✓ Complete course in 2months including Past paper discussion
- ✓ Join from anywhere using mobile/laptop using internet
- ✓ 100% feasible with job and 100% time adjustment for students
- ✓ www.fcpsworld.com or Contact: 03129684658
- ✓ Hostel Facility is also available (for those who want to join physical classes)

Www.Fcpsworld.com (Institute for Fcps & Md/Ms)

GOLD STANDRD OF MD/MS & FCPSBuy All past papers GoldStandard FCPS order at: 03100220370

www.facebook.com/FcpsWorld

www.facebook.com/GynaeObsWorld

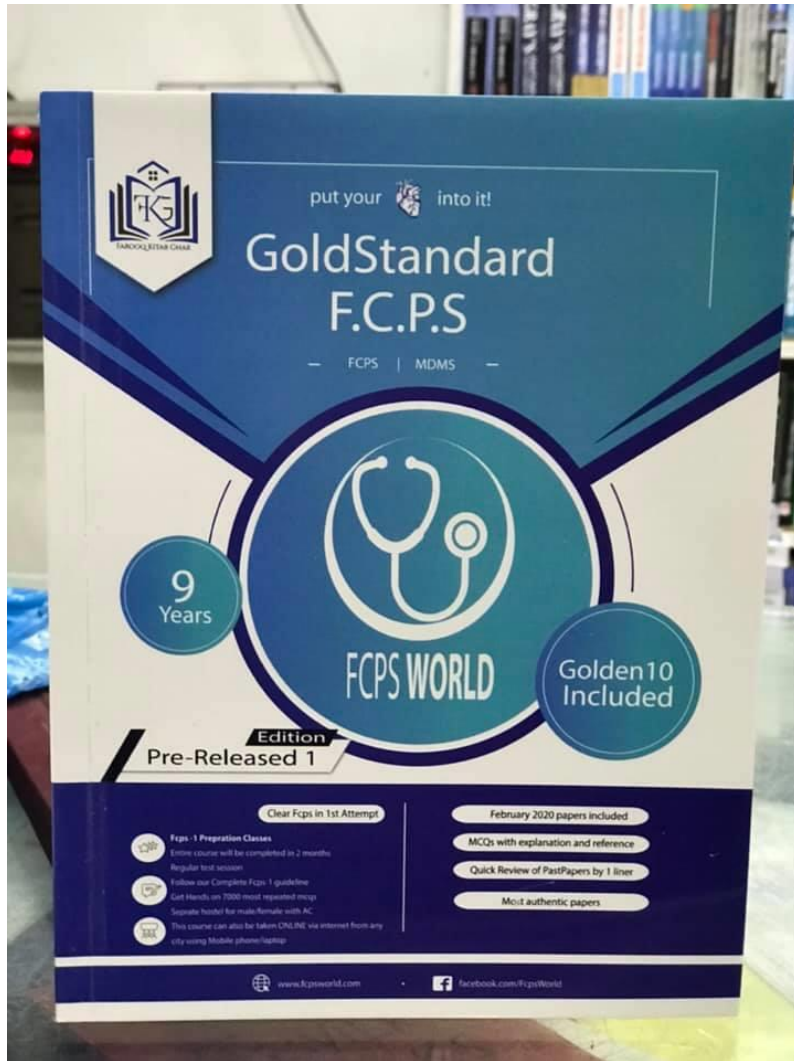
www.facebook.com/Ophtworld



Whatsapp 03129684658 to join whatsapp group of your specialty



- ✓ Now you can join us Online for MD/MS & Fcps Preparation
- ✓ Complete course in 2months including Past paper discussion
- ✓ Join from anywhere using mobile/laptop using internet
- ✓ 100% feasible with job and 100% time adjustment for students
- ✓ www.fcpsworld.com or Contact: 03129684658
- ✓ Hostel Facility is also available (for those who want to join physical classes)



GoldStandard **FCPS**

✓ Feb 2020 papers (recent updated)

✓ Authentic most repeated papers.

✓ MCQs with explanation and reference.

✓ 1 liner for rapid revision.
(Cram them)

✓ Mcqs with explanation and Ref.

✓ Clear FCPS-1 in 1st Attempt (Dont miss chance)

✓ **Free Cash on DeliveryOrder at 03100220370**



- ✓ Now you can join us Online for MD/MS & Fcps Preparation
- ✓ Complete course in 2months including Past paper discussion
- ✓ Join from anywhere using mobile/laptop using internet
- ✓ 100% feasible with job and 100% time adjustment for students
- ✓ www.fcpsworld.com or Contact: 03129684658
- ✓ Hostel Facility is also available (for those who want to join physical classes)

Www.Fcpsworld.com (Institute for Fcps & Md/Ms)

GOLD STANDRD OF MD/MS & FCPSBuy All past papers GoldStandard FCPS order at: 03100220370

www.facebook.com/FcpsWorld

www.facebook.com/GynaeObsWorld

www.facebook.com/Ophtworld



www.FCPSWORLD.com

GoldStandard FCPS:

Medicine & Allied

7th July 2020 Evening

- ✓ Clear FCPS-1 in **FIRST ATTEMPT**
- ✓ Entire course will be completed in 2 months.
- ✓ Live lectures via video Portal
- ✓ Daily Test session (Test discussion will be on Via Portal)
- ✓ Follow our complete guideline for FCPS-1
- ✓ Get Hands on 20,000 CPSP question (most of them repeat)
- ✓ Free study material, whatsapp group (only for our students)
- ✓ Don't Miss the chance. **(LIMITED SEATS AVAILABLE.)**
- ✓ WWW.FCPSWORLD.com
- ✓ WWW.facebook.com/fcpsworld
- ✓ For Details Phone# 03129684658



- ✓ Now you can join us Online for MD/MS & Fcps Preparation
- ✓ Complete course in 2months including Past paper discussion
- ✓ Join from anywhere using mobile/laptop using internet
- ✓ 100% feasible with job and 100% time adjustment for students
- ✓ www.fcpsworld.com or Contact: 03129684658
- ✓ Hostel Facility is also available (for those who want to join physical classes)



(Errors and omissions excepted)

Cram Statements

- ❖ **General visceral efferent means----->**Supply to smooth muscles of glands
- ❖ **vitamin requirement increases with protein intake----->**Riboflavin
- ❖ **Pellagra caused by----->**Niacin
- ❖ **During exercise, blood flow to muscles are by ----->**Sympathetic cholinergic fibers
- ❖ **41% hematocrit means----->**RBC only
- ❖ **80 years old patient with sudden HTN with no issue of previous hypertension cause is----->**anxiety
- ❖ **Theophylline, nitro-glycerine side effect----->** Tachycardia
- ❖ **Right ventricle gives rise to----->**Pulmonary Trunk
- ❖ **Hepatitis D most commonly occurs with----->**Hepatitis B
- ❖ **3rd heart sound----->**Rushing of blood rapidly in ventricles
- ❖ **Digoxin is given in----->**Atrial fibrillation
- ❖ **Hyperexcitability of neuron due to deficiency of----->**Ca
- ❖ **in low HR there will will----->**Diastolic decreases more than systolic
- ❖ **ECR different from ICF----->**Inc. Cl
- ❖ **True hermaphrodite karyotype----->**46 xx
- ❖ **Best thrombolytic agent----->**Alteplase
- ❖ **False negative tuberculin is in----->**severe malnutrition
- ❖ **MI 4 hour's back----->**Ck-MB
- ❖ **In the second week typhoid bacilli reside in----->**Payer patches



- ✓ Now you can join us Online for MD/MS & Fcps Preparation
- ✓ Complete course in 2months including Past paper discussion
- ✓ Join from anywhere using mobile/laptop using internet
- ✓ 100% feasible with job and 100% time adjustment for students
- ✓ www.fcpsworld.com or Contact: 03129684658
- ✓ Hostel Facility is also available (for those who want to join physical classes)



- ❖ **extension of back, prevented by----->Anterior longitudinal**
- ❖ **Active form of thyroid hormone is----->Unbound Form**
- ❖ **Gastrin is inhibited by----->Somataostatin**
- ❖ **Optic neuritis is caused due deficiency of----->Vitamin B6**
- ❖ **Temperature increases above set pointwhat will decrease----->Sweating**
- ❖ **A gland with more mucinous cell but few serous cells----->Submandibular**
- ❖ **Heparin is produced by----->mast cells**
- ❖ **Gastric acid is increased by----->medulla**
- ❖ **Weight gain can be monitored by----->Work output**
- ❖ **painless testicular mass with raised LDH level,diagnosis----->Lymphoma**
- ❖ **reversible injury seen in----->Cellular swelling**
- ❖ **Erythropoietin secretion is inhibited by----->Theophylline**
- ❖ **Tractus soliterius contains----->2nd order neuron**
- ❖ **Analgesic effect of TCA----->3-4 Weeks**
- ❖ **Lesser sac attachment at lesser curvature of stomach through ligament----->Hepatogastric ligament**
- ❖ **Most radiosensitive tumor----->Brainstem glioma**
- ❖ **Drug for active cardiac failure----->Diuretics**
- ❖ **Most common benign tumor of salivary gland----->Pleomorphic Adenoma**
- ❖ **Wrist joint is----->Ellipsoid joint**
- ❖ **HLA B27 is associated with----->enteric arthropathy**
- ❖ **test for infectious mononucleosis----->Monospot test (EBV)**



- ✓ Now you can join us Online for MD/MS & Fcps Preparation
- ✓ Complete course in 2months including Past paper discussion
- ✓ Join from anywhere using mobile/laptop using internet
- ✓ 100% feasible with job and 100% time adjustment for students
- ✓ www.fcpsworld.com or Contact: 03129684658
- ✓ Hostel Facility is also available (for those who want to join physical classes)



- ❖ **Thiazide moa----->Na/Cl Co Transport Blocker**
- ❖ **Development of anterior pituitary gland-----> Out pouching from stomdium**
- ❖ **Aplasia----->Failure of cell production**
- ❖ **Pap smear is very cost effective diagnostic test, how it detects disease-----**
 >Dysplasia
- ❖ **Histamine antagonist----->Cimetidine**
- ❖ **Warming of blood up to 37c will for massive transfusion----->Left to Right shift**
- ❖ **Growth hormone remains normal inpregnancy due to production of----->Human somatomammotrophin**
- ❖ **Most common immunoglobulin in body----->Ig-G**
- ❖ **Testicular tumor with mature sperm cell----->Teratoma**
- ❖ **Albumin is not freely filtered due to----->Negative charge**
- ❖ **hx of headache, diplopia, blurred vision tenderness in temporal region. cause -**
 ----->Gaint cell arteritis
- ❖ **Xiphistemum lies at a level of----->T9**
- ❖ **hemolytic Reaction will occur if O +ive given to-----> O-ive**
- ❖ **Supporting cells of pars nervosa----->Pituicytes**
- ❖ **Hormone of stress----->Cortisol**
- ❖ **Helper T Cells----->Produce Cytokines**
- ❖ **after ace inhibitor feels dizziness. Cause is----->Angiotensin 1 blockade in brain**



- ✓ Now you can join us Online for MD/MS & Fcps Preparation
- ✓ Complete course in 2months including Past paper discussion
- ✓ Join from anywhere using mobile/laptop using internet
- ✓ 100% feasible with job and 100% time adjustment for students
- ✓ www.fcpsworld.com or Contact: 03129684658
- ✓ Hostel Facility is also available (for those who want to join physical classes)



- ❖ **Heparin acts on-----> Antithrombin 3**
- ❖ **Phrenic nerve root value----->C4**
- ❖ **Patient has weakness of right side and upper limb and difficulty in speaking, artery is involved-----> Left MCA**
- ❖ **Internal jugular vein after leaving jugular has connection----->Internal carotid artery**
- ❖ **In new born the organ with adult size is----->Inner ear**
- ❖ **Streptococcus infection requires----->ASG titer**
- ❖ **Patient with cardiac implant, multiple abscesses in brain. The organism is-----> Nocardia**
- ❖ **hx of paralysis of leg and aphasia. Artery involved is-----> MCA**
- ❖ **In 2yr girl rash started behind ears, then neck then trunk. Cause is----->Measles**
- ❖ **Worsen prognosis in sepsis----->DIC**
- ❖ **Amyloidosis is diagnosed by----->rectal biopsy**
- ❖ **Labryntine artery is a branch of----->anterior inferior cerebellar artery**
- ❖ **Slow wave sleep is feature----->Teeth grinding**
- ❖ **medial side of the arm is supplied by brachial plexuss----->Medial cord**
- ❖ **Burkett lymphoma is due to----->EBV causing C-Mvc Translocation**
- ❖ **Diagnostic test for infectious mononucleosis----->Heterophil antibody**
- ❖ **Daily protein requirement for adult is----->1g/kg**
- ❖ **muscle size reduced after caste applied for few weeks of fracture----->Dec. actin and myosin**



- ✓ Now you can join us Online for MD/MS & Fcps Preparation
- ✓ Complete course in 2months including Past paper discussion
- ✓ Join from anywhere using mobile/laptop using internet
- ✓ 100% feasible with job and 100% time adjustment for students
- ✓ www.fcpsworld.com or Contact: 03129684658
- ✓ Hostel Facility is also available (for those who want to join physical classes)



- ❖ **Hirscsprung disease** ----->Conginetal Aganglionic Megacolor
- ❖ **Severe steatorrhea will result from**----->Total pancreatectomy
- ❖ **RBC caste in urine, low WBC**----->Glomerulonephritis
- ❖ **drug for preoperative anaesthetic in a patient with decompensation liver disease**----->Lorazepam
- ❖ **Target of hypertension in retina is**----->Arterioles
- ❖ **Mitral valve auscultation**----->Left 5th ICS midclavicular line
- ❖ **Old man with failing heart, best treated with**----->dopamine
- ❖ **Pulmonary valve opens when right ventricle pressure reach**----->8 mmHg
- ❖ **Increased HR will**----->Effects diastole more than systole
- ❖ **Radiation cause cancer after**----->10 years
- ❖ **Highest mortality is associated with which virus** ----->HDV
- ❖ **Most potent antioxidant**----->Glutathione
- ❖ **hypokalaemia, cortisol and VMA normal, renin is decreased, and patient is suffering from**----->Addison's disease
- ❖ **Blood in CSf**-----> Subarachnoid haemorrhage
- ❖ **Clostridium toxin act on**----->SNAP 25
- ❖ **petechial rash, bleeding gum and ecchymosis with fever. 1st test**----->CBC
- ❖ **Common cause of neonatal hyperbilirubinemia**----->Cholestasis
- ❖ **ACE inhibitors in preganacy cause**----->Renal agenesis
- ❖ **Least likely to cause decrease wound healing**----->Increase age
- ❖ **Characteristic of exudates**----->Inflammatory cells



- ✓ Now you can join us Online for MD/MS & Fcps Preparation
- ✓ Complete course in 2months including Past paper discussion
- ✓ Join from anywhere using mobile/laptop using internet
- ✓ 100% feasible with job and 100% time adjustment for students
- ✓ www.fcpsworld.com or Contact: 03129684658
- ✓ Hostel Facility is also available (for those who want to join physical classes)



- ❖ **Re-entry circuit occurs due to-----**>Paroxysmal nodal tachycardia
- ❖ **Indication of H2 blockers -----**>Dec. acidity and volume of contents
- ❖ **Erythropoietin is secreted by-----**> Peritubular capillaries (Erythropoietin is produced by interstitial fibroblasts in the kidney in close association with the peritubular capillary and proximal convoluted tubule. It is also produced in perisinusoidal cells in the liver.)
- ❖ **Metabolic acidosis causes-----**>CNS Depression
- ❖ **Structure lies in front of IVC-----**>Right testicular artery
- ❖ **laparotomy, Few hours later patient is having abdominal distension, tachycardia, and hypotension. What is the case-----**> Hypovolemic shock
- ❖ **Mechanism of polyuria in diabetic patient is-----**>decrease glucose reabsorption
- ❖ **secreted in gastric juice-----**>Pepsinogen
- ❖ **Baby passes stools after every feed is due to-----**>Gastro colic reflex
- ❖ **Depolarization in hair cells is due to-----**> Inwards flow of K
- ❖ **Factor 8 is produced by-----**>Endothelial cells
- ❖ **DVT emboli lodge in-----**>pulmonary artery
- ❖ **Standard deviation-----**> Square root of variance
- ❖ **choreiform-movement. Autosomal dominant single gene defect-----**>Hungtington
- ❖ **drooling of saliva but can close his eyes. lesion located in-----**>Supranuclear nucleus
- ❖ **Lymph flow will be decreased in-----**>Haemorrhage
- ❖ **Suprapubic transverse incision is at risk of damage-----**>inferior epigastric artery



- ✓ Now you can join us Online for MD/MS & Fcps Preparation
- ✓ Complete course in 2months including Past paper discussion
- ✓ Join from anywhere using mobile/laptop using internet
- ✓ 100% feasible with job and 100% time adjustment for students
- ✓ www.fcpsworld.com or Contact: 03129684658
- ✓ Hostel Facility is also available (for those who want to join physical classes)



- ❖ **DOC for myasthenia gravis----->Neostigmine**
- ❖ **Burkitt's lymphoma is caused bv----->EBV**
- ❖ **Corpus leutum releases----->Progesterone + estradio (estrogen) + inhibin A**
- ❖ **Vit. B12 deficiency after gastrectomy is treated by----->IV VitB12**
- ❖ **red raised purplish lesions on skin with generalized lymphadenopathy with oral thrush, cause-----> HHV8**
- ❖ **Vitamin D causes----->Increase serum phosphate**
- ❖ **causes SCC----->Radon**
- ❖ **Common cause of carcinoma mouth in adults is----->smoking**
- ❖ **Ovarian CA tumor marker----->CA-125**
- ❖ **Insulin is inhibited by----->beta blocker**
- ❖ **In atopic asthma, antigen binds to----->Mucosal mast cells**
- ❖ **Vitamin C deficiency causes----->Bleeding gums**
- ❖ **In which phase chromosomes are chromatids----->Prophase**
- ❖ **Eating of raw and undercooked meat can cause infestation of----->Tape worm**
- ❖ **Red green colour blindness is side of which at drug----->Ethambutol**
- ❖ **Enzyme which combines two and make a single compound----->Synthetase**
- ❖ **Most common function ofprogesterone----->Maintain thickness of endometrium**
- ❖ **Calcitonin released by tumor of----->Thyroid**
- ❖ **Popliteal nodes enlarged if affected area is-----> lateral dorsal surface of foot**
- ❖ **Patient having resting tremors,rigidity and expressionless face. Part involve-----> Substantia nigra**



- ✓ Now you can join us Online for MD/MS & Fcps Preparation
- ✓ Complete course in 2months including Past paper discussion
- ✓ Join from anywhere using mobile/laptop using internet
- ✓ 100% feasible with job and 100% time adjustment for students
- ✓ www.fcpsworld.com or Contact: 03129684658
- ✓ Hostel Facility is also available (for those who want to join physical classes)



- ❖ Progesterone is responsible for----->stromal development
- ❖ Patient with Right hemiplegia with lower face weakness and right homonymous hemianopia. Where is the lesion----->Forebrain
- ❖ Entero-kinase converts----->Trypsinogen to trypsin
- ❖ Supra renal gland supply----->Greater Splanchnic
- ❖ Gastrin is released from----->Antrum
- ❖ Slow wave in GIT involves----->Rhythmic oscillations

- ❖ elbow of 12 years girl, secondary ossification center will appear last----->Lateral epicondyle
- ❖ preoperatively in patient pheochromocytoma We will give----->Alpha followed by beta blockers
- ❖ Fev1/Fvc normal range is----->0.8
- ❖ Goblet cells are----->Modified columnar epithelium
- ❖ Facial nerve enters to temporal bone through ----->Internal acoustic meatus
- ❖ Pregnant lady went to remote village presented with jaundice diagnosis----->Hepatitis E
- ❖ structure lies in upper 1/3rd of medulla----->vestibulocochlear nucleus
- ❖ Accommodation reflex intact but light reflex lost, lesion is in----->Pretectum

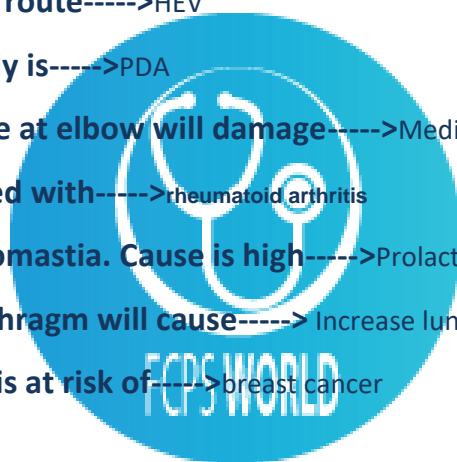
- ❖ Heparin binds with----->Anti-Thrombin 3



- ✓ Now you can join us Online for MD/MS & Fcps Preparation
- ✓ Complete course in 2months including Past paper discussion
- ✓ Join from anywhere using mobile/laptop using internet
- ✓ 100% feasible with job and 100% time adjustment for students
- ✓ www.fcpsworld.com or Contact: 03129684658
- ✓ Hostel Facility is also available (for those who want to join physical classes)



- ❖ **A tumor of 3.6cm in size, ipsilateral lymph nodes and metastasis----->T2.N1.M1**
- ❖ **Ileal resection cause----->Increase water loss in stool**
- ❖ **Smoking is related to----->Gaint cell arteritis**
- ❖ **MAO of cyclosporine is-----> Inhibit T cell differentiation**
- ❖ **Insulin independent glucose uptakeis----->exercising skeletal muscles**
- ❖ **Byssinosis is common in ----->Textile industry**
- ❖ **B12 deficiency after ATT-----> Isoniazid**
- ❖ **spread by feco-oral route----->HEV**
- ❖ **large vessel anomaly is----->PDA**
- ❖ **Ulnar nerve damage at elbow will damage----->Medial 2 lumbericals**
- ❖ **HLA dr4 is associated with----->rheumatoid arthritis**
- ❖ **Male having gynecomastia. Cause is high----->Prolactin**
- ❖ **Contraction of diaphragm will cause-----> Increase lung volume**
- ❖ **Female taking HRT is at risk of----->breast cancer**



- ✓ Now you can join us Online for MD/MS & Fcps Preparation
- ✓ Complete course in 2months including Past paper discussion
- ✓ Join from anywhere using mobile/laptop using internet
- ✓ 100% feasible with job and 100% time adjustment for students
- ✓ www.fcpsworld.com or Contact: 03129684658
- ✓ Hostel Facility is also available (for those who want to join physical classes)

Www.Fcpsworld.com (Institute for Fcps & Md/Ms)

GOLD STANDRD OF MD/MS & FCPSBuy All past papers GoldStandard FCPS order at: 03100220370

www.facebook.com/FcpsWorld

www.facebook.com/GynaeObsWorld

www.facebook.com/Ophtworld



Whatsapp 03129684658 to join whatsapp group of your specialty

FCPS-1 ONLINE COURSE

Join FcpsWorld Online preparation courses and clear exam in 1st Attempt.

WWW.FCPSWORLD.COM



Fcpsworld



www.fcpsworld.com



- ✓ Now you can join us Online for MD/MS & Fcps Preparation
- ✓ Complete course in 2months including Past paper discussion
- ✓ Join from anywhere using mobile/laptop using internet
- ✓ 100% feasible with job and 100% time adjustment for students
- ✓ www.fcpsworld.com or Contact: 03129684658
- ✓ Hostel Facility is also available (for those who want to join physical classes)



GoldStandard **FCPS**

✓ Feb 2020 papers (recent updated)

✓ Authentic most repeated papers.

✓ MCQs with explanation and reference.

✓ 1 liner for rapid revision.
(Cram them)

✓ Mcqs with explanation and Ref.

✓ Clear FCPS-1 in 1st Attempt (Dont miss chance)

✓ **Free Cash on DeliveryOrder at 03100220370**



- ✓ Now you can join us Online for MD/MS & Fcps Preparation
- ✓ Complete course in 2months including Past paper discussion
- ✓ Join from anywhere using mobile/laptop using internet
- ✓ 100% feasible with job and 100% time adjustment for students
- ✓ www.fcpsworld.com or Contact: 03129684658
- ✓ Hostel Facility is also available (for those who want to join physical classes)

Www.Fcpsworld.com (Institute for Fcps & Md/Ms)

GOLD STANDRD OF MD/MS & FCPS

Buy All past papers GoldStandard FCPS order at: 03100220370

www.facebook.com/FcpsWorld

www.facebook.com/GynaeObsWorld



www.FCPSWORLD.com

GoldStandard FCPS:

Medicine & Allied

7th July 2020 Morning

- ✓ Clear FCPS-1 in **FIRST ATTEMPT**
- ✓ Entire course will be completed in 2 months.
- ✓ Live lectures via video Portal
- ✓ Daily Test session (Test discussion will be on Via Portal)
- ✓ Follow our complete guideline for FCPS-1
- ✓ Get Hands on 20,000 CPSP question (most of them repeat)
- ✓ Free study material, whatsapp group (only for our students)
- ✓ Don't Miss the chance. **(LIMITED SEATS AVAILABLE.)**
- ✓ **WWW.FCPSWORLD.com**
- ✓ **WWW.facebook.com/fcpsworld**
- ✓ For Details Phone# 03129684658



- ✓ Now you can join us Online for MD/MS & Fcps Preparation
- ✓ Complete course in 2months including Past paper discussion
- ✓ Join from anywhere using mobile/laptop using internet
- ✓ 100% feasible with job and 100% time adjustment for students
- ✓ www.fcpsworld.com or Contact: 03129684658
- ✓ Hostel Facility is also available (for those who want to join physical classes)



(Errors and omissions excepted)

Cram Statements

- ❖ Young female present with gum bleeding, petechial and epistaxis. Gold standard is----->Bone marrow biopsy
 - ❖ Exotoxins in food poisoning is organism----->Staph aureus
 - ❖ Mesocolon attached posteriorly to spleen by----->Gastro colic ligament
 - ❖ deficiency of riboflavin and niacin causes----->pellagra (Pellagra is a multiple-deficiency disease associated with diets providing low levels of niacin and/or tryptophan and often involving other B vitamins resulting in changes in the skin, gastrointestinal tract, and nervous system.)
 - ❖ 1 heart sound produced by----->closure of AV value
 - ❖ cimetidine in operation will----->secretion
 - ❖ characteristic of cardiac tamponade is----->Pulsus paradoxus
 - ❖ dyspnoea on lying down. Cause may be----->Retrosternal goitre
 - ❖ Bronchogenic CA is caused by----->CMV
 - ❖ A new born with repeated respiratory infection. Cause is----->igG deficiency
 - ❖ In Acute exacerbation of asthma appropriate test is----->PEFR
- (Exacerbations are characterized by decreases in expiratory airflow that can



- ✓ Now you can join us Online for MD/MS & Fcps Preparation
- ✓ Complete course in 2months including Past paper discussion
- ✓ Join from anywhere using mobile/laptop using internet
- ✓ 100% feasible with job and 100% time adjustment for students
- ✓ www.fcpsworld.com or Contact: 03129684658
- ✓ Hostel Facility is also available (for those who want to join physical classes)



be documented and quantified by simple measurement of lung function (spirometry or PEF).

- ❖ Hypotension and vasodilation is due to----->Septic shock
- ❖ actin and myosin bridging is due to ----->Ca⁺
- ❖ Most common pre-malignant lesion of oral cavity is----->Leukoplakia
- ❖ Slowest conduction is found in----->AV node
- ❖ in nephrotic syndrome Cause of oedema is----->Decrease oncotic pressure
- ❖ present in the middle of medulla----->Nucleus ambiguus
- ❖ Fracture neck of fibula with loss of eversion and dorsiflexion-----
≥Common peroneal nerve
- ❖ Diphtheria toxo vaccination type of hypersensitivity----->Type 3 HSR
- ❖ Bronchoalveolar lavage shows boat shaped cyst. organism is-----
≥Pneumocystis carinii
- ❖ Secondary cartilaginous joint example----->fibrocartilage tissue b/w bone
- ❖ Patellar knee jerk is feature of injury of----->Cerebellum
- ❖ The side effect of theophylline and nitroglycerine----->Tachycardia
- ❖ A diabetic patient with myxoedema presented with hypertension. DOC---
---> Captopril
- ❖ In pregnancy test hormone is measured in urine----->HCG



- ✓ Now you can join us Online for MD/MS & Fcps Preparation
- ✓ Complete course in 2 months including Past paper discussion
- ✓ Join from anywhere using mobile/laptop using internet
- ✓ 100% feasible with job and 100% time adjustment for students
- ✓ www.fcpsworld.com or Contact: 03129684658
- ✓ Hostel Facility is also available (for those who want to join physical classes)



- ❖ Loud S1 opening snap and mid diastolic rumbling murmur at apex are characteristic of----->Mitral stenosis
- ❖ Hypersensitivity is by----->Mycoplasma tuberculosis (best among options)
- ❖ similar to atropine is----->Scopolamine
- ❖ Programmed cell death is known as----->Apoptosis
- ❖ opsonisation is due to----->C3b
- ❖ polycythaemia film show----->Increase in red cell mass
- ❖ blood vessels factor causing cancer is----->VEGF
- ❖ poor recall .. Iron staining cells----->Hep C (iron deposition is most clinically relevant iron staining pattern)
- ❖ coronary artery in Posterior 1/3 myocardial infarction involvement is-----
>posterior descending artery
- ❖ Juvenile polyposis syndrome example----->Haemartomatous
- ❖ Female is on HRT for 10 years. She has Risk of----->Breast CA
- ❖ bi temporal hemianopia with prolectenemia. Cause is----->Pituitary Adenoma
- ❖ Marker diagnostic for colon CA is----->CEA
- ❖ Complement system formed by----->Hepatocytes
- ❖ Submental and submandibular lymoil node drains----->jower lip



- ✓ Now you can join us Online for MD/MS & Fcps Preparation
- ✓ Complete course in 2months including Past paper discussion
- ✓ Join from anywhere using mobile/laptop using internet
- ✓ 100% feasible with job and 100% time adjustment for students
- ✓ www.fcpsworld.com or Contact: 03129684658
- ✓ Hostel Facility is also available (for those who want to join physical classes)



- ❖ cell will swell more quickly in----->250 ml urea
- ❖ mitochondria mutation is Derived from-----> mother
- ❖ Local cause of prolong wound healing is----->Infection
- ❖ slow wave in sleep is during----->Teeth grinding
- ❖ Part of nephron impermeable to water is----->Ascending loop of Henle
- ❖ can cause platelet aggregation----->Thromboxane
- ❖ Bile salts were absorbed by----->Ileum
- ❖ Pancreatic enzyme deficiency cause----->Decrease absorption of triglycerides (lipid breakdown)
- ❖ old hypertensive with thyrotoxicosis, DOC----->Propranolol
- ❖ feature of ovulation----->ferning cervical mucus
- ❖ Primary auditory cortex lies at----->Inferior temporal lobe
- ❖ Gene amplification tumor is----->Neuroblastoma
- ❖ Amyloid plaques and neurofibrillary tangles are characteristic of-----
>Alzheimer's disease
- ❖ history of fever, bilateral lymphadenopathy, hepatosplenomegaly, anaemia. bitten by some fly. Cause is----->Kala-azar
- ❖ Ectopic pancreatic tissue is called----->Choristoma (Choristoma is a rare benign tumour consisting of microscopically normal tissue derived from germ cell layers foreign to that body site)



- ✓ Now you can join us Online for MD/MS & Fcps Preparation
- ✓ Complete course in 2 months including Past paper discussion
- ✓ Join from anywhere using mobile/laptop using internet
- ✓ 100% feasible with job and 100% time adjustment for students
- ✓ www.fcpsworld.com or Contact: 03129684658
- ✓ Hostel Facility is also available (for those who want to join physical classes)



- ❖ factor activated in lungs----->Angiotensin-2
- ❖ A child with rigors and chills develops dark colour urine after taking medication . cause-----> G6PD (anti malarial drugs)
- ❖ Amoeba resides in----->Cecum
- ❖ Droplet infection transmission occurs at a distance of----->1 to 3 feet
- ❖ type of breathing in diabetic acidosis----->Kussmal breathing
- ❖ Vitamin required for acetyl CoA is----->Pantothenic acid
- ❖ Potassium sparing diuretics mechanism of action is----->Decrease Na/k exchange in DCT
- ❖ brachiocephalic vein formed by----->Internal jugular and subclavian veins
- ❖ Role of epidemiologist is----->Prevention of disease
- ❖ Change of epithelium from one type to another is called----->Metaplasia
- ❖ subdural haematoma, is due to rupture of----->Superior cerebral vein
- ❖ Adult polycystic kidney disease is----->Autosomal dominant
- ❖ hyaline membrane disease cause----->Prematurity
- ❖ Complication of diabetic foot----->wet gangrene
- ❖ Best donor for transplant is----->Twin



- ✓ Now you can join us Online for MD/MS & Fcps Preparation
- ✓ Complete course in 2months including Past paper discussion
- ✓ Join from anywhere using mobile/laptop using internet
- ✓ 100% feasible with job and 100% time adjustment for students
- ✓ www.fcpsworld.com or Contact: 03129684658
- ✓ Hostel Facility is also available (for those who want to join physical classes)



- ❖ Glands are present in----->Lamina propria
 - ❖ after mastectomy presented with arm swelling. Cause is----->Lymph obstruction
 - ❖ A trophic gastritis presented with macrocytic anaemia cause is----->Vitamin B12
 - ❖ Insulin in-dependant glucose uptake occurs in----->Hypothalamus (brain)
 - ❖ Temperature is controlled by----->Anterior hypothalamus
 - ❖ Posterior pituitary derived from----->Diencephalon
 - ❖ acts by cAMP----->MSH
 - ❖ Aortic valve opens when pressure rise to----->80
 - ❖ Mitochondria abundant in----->Ciliated cells
- 
- ❖ Superior rectal artery is a branch of----->Inferior mesenteric artery
 - ❖ Regarding autosomal recessive----->One of four siblings affected 25%
 - ❖ Last intracranial branch of facial nerve is----->nerve to stapedius
 - ❖ Steep curve shows ----->small dose, large effect
 - ❖ DOC for acute pancreatitis is----->pethidine (opoid)
 - ❖ After bomb blast injury type of deafness will be----->Mixed deafness



- ✓ Now you can join us Online for MD/MS & Fcps Preparation
- ✓ Complete course in 2months including Past paper discussion
- ✓ Join from anywhere using mobile/laptop using internet
- ✓ 100% feasible with job and 100% time adjustment for students
- ✓ www.fcpsworld.com or Contact: 03129684658
- ✓ Hostel Facility is also available (for those who want to join physical classes)



- ❖ Most common site of rib fracture is----->Angle
- ❖ Labs show Aptt and BT prolong whereas PT is normal. cause is----->VWB
disease (BT always rise in platelet dysfunction)
- ❖ second heart sound----->occurs during isovolumetric relaxation phase of
cardiac cycle
- ❖ Structure present deep in cortex is-----> Insula
- ❖ Prolong QRS complex cause----->Ventricular hypertrophy
- ❖ Nerve carrying afferent fibers are----->Optic nerve
- ❖ Patient presented with mild haemorrhage. BP was controlled. Now there
will be decrease in----->heart rate
- ❖ descending aorta is----->T4
- ❖ Doc in patient with meningitis----->Penicillin G
- ❖ injury to TMJ causing difficulty opening of mouth is due to-----> lateral
pterygoid
- ❖ Minor calyx receive urine from----->Papilla
- ❖ heart sound is felt on left parasternal 3rd inter coastal space----->Aortic
- ❖ hx of smoking. Bronchoscopy show-----> metaplasia
- ❖ Most locally spreading tumor is-----> Ameloblastoma



- ✓ Now you can join us Online for MD/MS & Fcps Preparation
- ✓ Complete course in 2months including Past paper discussion
- ✓ Join from anywhere using mobile/laptop using internet
- ✓ 100% feasible with job and 100% time adjustment for students
- ✓ www.fcpsworld.com or Contact: 03129684658
- ✓ Hostel Facility is also available (for those who want to join physical classes)



- ❖ blood supply of visual tree----->Central retinal artery supply nerve
- ❖ Regarding new born----->C shaped vertebral column
- ❖ preferred treatment for warfarin toxicity----->FFP

- ❖ Iodine will secrete through----->Urine
- ❖ splenomegaly with WBC 1lac Hb is 6.4, platelet 20,000 transcription involved----->922

- ❖ Potent antioxidant----->Vitamin A
- ❖ In case of dehydration, ECF is----->Hypertonic
- ❖ Opioid antidote is----->Naloxone
- ❖ Benzodiazepines reduces-----> REM sleep
- ❖ In forceful flexion of neck ligament is torn----->Ligamnetum nuchae
- ❖ peripheral neuropathy is in poisoning of----->lead
- ❖ disease having low complement level----->SLE
- ❖ In CKD patients anemia is due to ----->erythropoietin deficiency
- ❖ Superficial fascia is mixture of-----> Loose aerolar and adipose tissue
- ❖ Intra-embryonic coelom derivative of----->Lateral plate mesoderm
- ❖ Sensitive test for SLE is----->ANA
- ❖ Source of progesterone in 2nd and 3rdtrimester is----->Placenta



- ✓ Now you can join us Online for MD/MS & Fcps Preparation
- ✓ Complete course in 2months including Past paper discussion
- ✓ Join from anywhere using mobile/laptop using internet
- ✓ 100% feasible with job and 100% time adjustment for students
- ✓ www.fcpsworld.com or Contact: 03129684658
- ✓ Hostel Facility is also available (for those who want to join physical classes)



- ❖ Most common cause of cirrhosis----->Alcoholism
- ❖ gluteus maxlmus muscle blood supply----->inferior gluteal artery
- ❖ neural cell derivative is----->Dorsal root ganglion
- ❖ unable to recognize faces. Area damaged is----->Fusiform gyrus
- ❖ Trypsinogen is converted to trypsin due to ----->Increase in pH (alkaline ph with enterokinase activity)
- ❖ In shock with due to failure of heart.which should be given-----
>Dopamine
- ❖ Treatment for obstructive sleep apnea----->UPPP
(Uvulopalatopharyngoplasty (UPPP) is a procedure that removes excess tissue in the throat to make the airway wider.)
- ❖ Destruction of the supraoptic nuclei of the brain will produce -----
>increased volume but dilute
- ❖ Prolong survival of graft is possible with ----->Agammaglobulinemia
- ❖ Patient underwent cholecystectomy on 3rd POD presented dyspnoea, chest pain----->Pulmonary embolism
- ❖ artery is posterior to sternum----->Internal thoracic artery'
- ❖ after complicated delivery, unable to breastfeed, amenorrheo. dry skin and hypotension. Cause is----->Sheehan syndrome
- ❖ structures lies anterior to trachea in thoracic cavity----->Arch of aorta



- ✓ Now you can join us Online for MD/MS & Fcps Preparation
- ✓ Complete course in 2months including Past paper discussion
- ✓ Join from anywhere using mobile/laptop using internet
- ✓ 100% feasible with job and 100% time adjustment for students
- ✓ www.fcpsworld.com or Contact: 03129684658
- ✓ Hostel Facility is also available (for those who want to join physical classes)

Www.Fcpsworld.com (Institute for Fcps & Md/Ms)

GOLD STANDRD OF MD/MS & FCPS

Buy All past papers GoldStandard FCPS order at: 03100220370

www.facebook.com/FcpsWorld

www.facebook.com/GynaeObsWorld



FCPS-1 ONLINE COURSE

Join FcpsWorld Online preparation courses and clear exam in 1st Attempt.

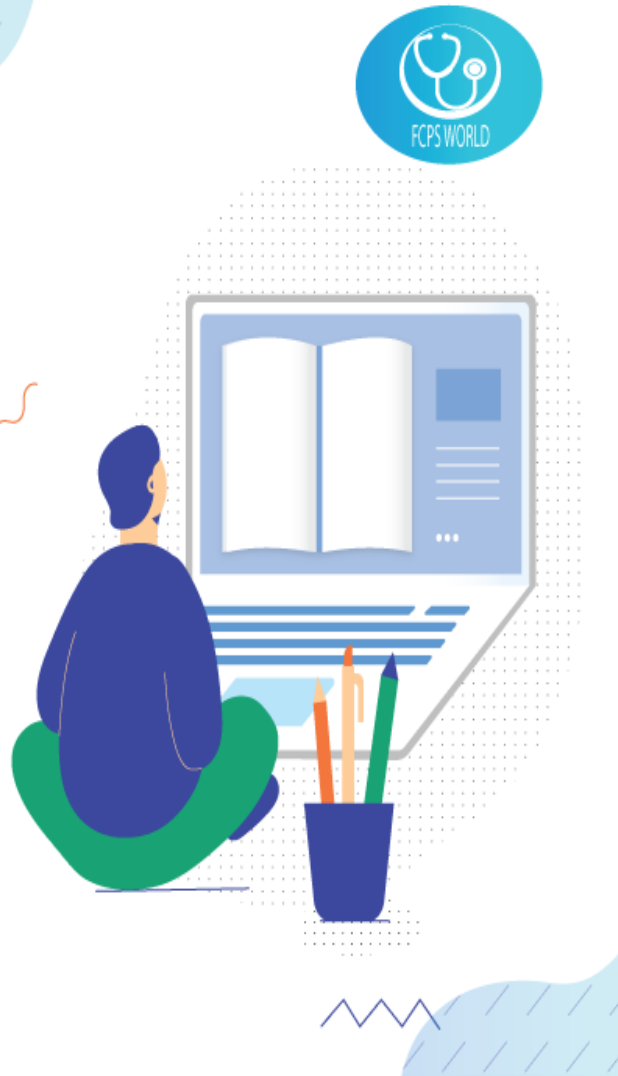
WWW.FCPSWORLD.COM



Fcpsworld



www.fcpsworld.com



- ✓ Now you can join us Online for MD/MS & Fcps Preparation
- ✓ Complete course in 2months including Past paper discussion
- ✓ Join from anywhere using mobile/laptop using internet
- ✓ 100% feasible with job and 100% time adjustment for students
- ✓ www.fcpsworld.com or Contact: 03129684658
- ✓ Hostel Facility is also available (for those who want to join physical classes)

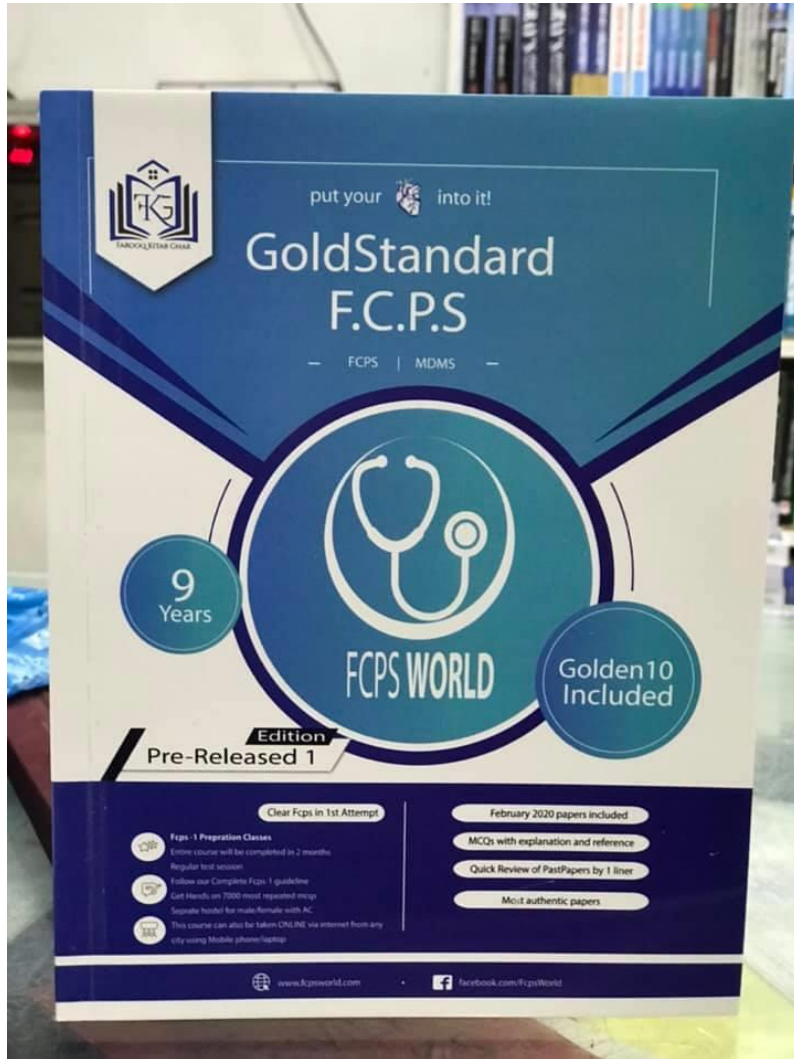
Www.Fcpsworld.com (Institute for Fcps & Md/Ms)

GOLD STANDRD OF MD/MS & FCPS

Buy All past papers GoldStandard FCPS order at: 03100220370

www.facebook.com/FcpsWorld

www.facebook.com/GynaeObsWorld



GoldStandard **FCPS**

✓ Feb 2020 papers (recent updated)

✓ Authentic most repeated papers.

✓ MCQs with explanation and reference.

✓ 1 liner for rapid revision. (Cram them)

✓ Mcqs with explanation and Ref.

✓ Clear FCPS-1 in 1st Attempt (Dont miss chance)

✓ Free Cash on Delivery

Order at 03100220370



- ✓ Now you can join us Online for MD/MS & Fcps Preparation
- ✓ Complete course in 2months including Past paper discussion
- ✓ Join from anywhere using mobile/laptop using internet
- ✓ 100% feasible with job and 100% time adjustment for students
- ✓ www.fcpsworld.com or Contact: 03129684658
- ✓ Hostel Facility is also available (for those who want to join physical classes)

Www.Fcpsworld.com (Institute for Fcps & Md/Ms)

GOLD STANDRD OF MD/MS & FCPSBuy All past papers GoldStandard FCPS order at: 03100220370

www.facebook.com/FcpsWorld

www.facebook.com/GynaeObsWorld

www.facebook.com/Ophtworld



www.FCPSWORLD.com

GoldStandard FCPS:

Medicine & Allied

7th July 2020 Night

- ✓ Clear FCPS-1 in **FIRST ATTEMPT**
- ✓ Entire course will be completed in 2 months.
- ✓ Live lectures via video Portal
- ✓ Daily Test session (Test discussion will be on Via Portal)
- ✓ Follow our complete guideline for FCPS-1
- ✓ Get Hands on 20,000 CPSP question (most of them repeat)
- ✓ Free study material, whatsapp group (only for our students)
- ✓ Don't Miss the chance. **(LIMITED SEATS AVAILABLE.)**
- ✓ WWW.FCPSWORLD.com
- ✓ WWW.facebook.com/fcpsworld
- ✓ For Details Phone# 03129684658



- ✓ Now you can join us Online for MD/MS & Fcps Preparation
- ✓ Complete course in 2months including Past paper discussion
- ✓ Join from anywhere using mobile/laptop using internet
- ✓ 100% feasible with job and 100% time adjustment for students
- ✓ www.fcpsworld.com or Contact: 03129684658
- ✓ Hostel Facility is also available (for those who want to join physical classes)



(Errors and omissions excepted)

Cram Statements

- ❖ **Regarding coronary arteries-----**>2 coronary arteries, 1 atrioventricular, 2septal arteries
- ❖ **Premalignant lesion is-----**>bovens disease
- ❖ **Pleurocentesis is done in-----**>Lower part of 9 ICS midaxillarv line
- ❖ **Utricle and saccule function is-----**>position
- ❖ **sertoli cells-----**>androgen inhibiting factor
- ❖ **Aortic insufficiency is found in-----**>Ankyloses spondylitis
- ❖ **in resection of ileum 100cm-----**>Decrease salt & water absorption
- ❖ **cause of autoimmune haemolytic anemia-----**>Idiopathic
- ❖ **MAO of dicylomine is-----**>M3 receptor
- ❖ **UMN lesion involved-----**>Corticospinal and corticobulbar tracts
- ❖ **progressive generalized lymphadenopathy. Ka Hb is 8, TLC 80 x 10 and platelet count is 94 x 10. mature lymphocytes. diagnosis-----**>Chronic lymphocytic leukaemia
- ❖ **Radiation causes cancer in-----**>10 Years
- ❖ **muscle of neck demarcation poor recall-----**>SCM (best answer), scalenonus anterior , stylohyoid.
- ❖ **Action potential transfer from cell to cell-----**>Gap junction
- ❖ **Final product of purine metabolism-----**>Uric acid
- ❖ **Free nerve ending is sensitive to-----**>Pain
- ❖ **Ventral spinothalamic tract lesion, loss of-----**>Crude touch
- ❖ **Lesion in the optic radiation in Meyers loop causes-----**>Superior quadrantomia



- ✓ Now you can join us Online for MD/MS & Fcps Preparation
- ✓ Complete course in 2months including Past paper discussion
- ✓ Join from anywhere using mobile/laptop using internet
- ✓ 100% feasible with job and 100% time adjustment for students
- ✓ www.fcpsworld.com or Contact: 03129684658
- ✓ Hostel Facility is also available (for those who want to join physical classes)



- ❖ Pellagra is caused due to deficiency of----->Niacin
- ❖ ECG shows 2 p waves and 1 qrs complex pattern. Diagnosis is----->Mobitz type 2
- ❖ Regarding coronary blood flow ----->decrease with increase in heart rate
(<https://www.ncbi.nlm.nih.gov/pmc/articles/PMC2438254/>)
- ❖ Selective proteinuria occurs in----->Minimal change disease
- ❖ tendency to fall on left side, left limb tremor and asthenia of left side, damaged area is----->left Cerebellum
- ❖ Regarding lymph vessels----->Drains tissue fluid back
- ❖ Femoral hernia lies lateral;----->Below and lateral to pubic tubercle
- ❖ Women has been injected PPD, after 24hrs reaction occurs. ----->T-cells
- ❖ Lesion in the optic radiation involving Meyers loop causes----->Superior quadrantanopia
- ❖ Damage to adenohypophysis (pituitary gland)leads to----->Zona fasciculata (adrenal)
- ❖ Infarction in posterior 1/3 of ventricular septum, artery is----->RCA
- ❖ Saw tooth appearance is characteristics of----->Atrial flutter
- ❖ Parietal cells secretes----->Hcl + Intrinsic factor
- ❖ Air born Droplet infection can spread----->3 to 6 feet
- ❖ Lymph flow decreased by increase of----->Increased oncotic pressure
- ❖ Nasopharyngeal carcinoma is caused by----->EBV
- ❖ 1 biostat question to find MEAN from list----->
- ❖ Virus causes cancer by altering----->Proto-oncogene



- ✓ Now you can join us Online for MD/MS & Fcps Preparation
- ✓ Complete course in 2months including Past paper discussion
- ✓ Join from anywhere using mobile/laptop using internet
- ✓ 100% feasible with job and 100% time adjustment for students
- ✓ www.fcpsworld.com or Contact: 03129684658
- ✓ Hostel Facility is also available (for those who want to join physical classes)



- ❖ **Nucleus is----->Hemotoxvlin**
- ❖ **Hemibilusmus lesion----->Sub thalamic Nuclei**
- ❖ **Most radiosensitive is----->Lymph node**
- ❖ **Patient standing normally with eyes open but falls to side when eyes closed lesion is in----->Dorsal column medial leminescus**
- ❖ **GFR in CRF patient is measured by----->Creatinine clearance**
- ❖ **left shift of O2 HB dissociation curve----->Haldene Effect**
- ❖ **Basophilia of cell is due to----->Ribosomes**
- ❖ **Cimetidine moa----->H2 antagonist**
- ❖ **Thyroid gland is enclosed by----->Pretracheal fascia**
- ❖ **Vibrio cholera cause diarrhea due to----->increase chloride secretion , cAMP activation**
- ❖ **Anaemia will always have low----->HB**
- ❖ **cause of autoimmune haemolytic anemia----->Idiopathic**
- ❖ **Abnormal Babinsld sign, lesion is----->Pyramids**
- ❖ **CSF & plasma different in----->Decrease PH**
- ❖ **Posterior surface of heart is supplied by----->RCA**
- ❖ **Least in circulating blood----->basophila**
- ❖ **Factor 8 deficiency is treated by----->Cryoprecipitate**
- ❖ **Highest cross section area----->Capillanes**
- ❖ **Lady with pallor and weakness low mcv taste changes and eg stools, what is the dx----->Ancylostoma Deudenale**
- ❖ **newborn with meningitis----->Strep agalacticae**



- ✓ Now you can join us Online for MD/MS & Fcps Preparation
- ✓ Complete course in 2months including Past paper discussion
- ✓ Join from anywhere using mobile/laptop using internet
- ✓ 100% feasible with job and 100% time adjustment for students
- ✓ www.fcpsworld.com or Contact: 03129684658
- ✓ Hostel Facility is also available (for those who want to join physical classes)



- ❖ **herpes simplex treatment----->Acyclovir**
- ❖ **Hemophilia is----->X linked Recessive**
- ❖ **A man goes to Siachin 12000 feet develops dysnea, cause----->Pulmonary edema**
- ❖ **Malignant tertian malaria is caused-by----->P. Falciparum**
- ❖ **Worker having carcinoma bladder exposed to----->Aryl amine**
- ❖ **epistaxis, Hight BT with platelets are 2 lac. Defect is----->Platelet functional defect**
- ❖ **Type of necrosis common in kidney----->Coagulative necrosis**
- ❖ **drug cause histamine release and hypotention----->Vancomycin**
- ❖ **Sternohyoid nerve supply----->Ansa Cervical**
- ❖ **function of sertoli cells----->Acts as blood testis barrier**
- ❖ **Contraindication of anticoagulant----->Cerebral infracts**
- ❖ **drug with no receptor----->aluminium hydroxide**
- ❖ **During exercise, blood flow decreases to----->kidney**
- ❖ **Testicular tumor with mature sperm cell is----->Teratoma**
- ❖ **Neurotransmitter of basal ganglia is----->GABA**
- ❖ **turner syndrome----->45 XO**
- ❖ **Staging determines----->Tumor invasion**
- ❖ **After chemotherapy tumor size regressby----->Apoptosis**
- ❖ **Middle thyroid vein drain into----->Brachiocephalic vein**
- ❖ **HCV liver bipsy show----->Periportal Fibrosis**
- ❖ **Patient presented with difficulty in inversion of foot, most probably cause of damage is----->Tibialis anterior and posterior**



- ✓ Now you can join us Online for MD/MS & Fcps Preparation
- ✓ Complete course in 2months including Past paper discussion
- ✓ Join from anywhere using mobile/laptop using internet
- ✓ 100% feasible with job and 100% time adjustment for students
- ✓ www.fcpsworld.com or Contact: 03129684658
- ✓ Hostel Facility is also available (for those who want to join physical classes)



- ❖ **Strontium 90 causes----->leukemia**
- ❖ **Most common cause of infective endocarditis in IV drug abusers is----->Strep aureus**
- ❖ **cold water in ear cause nausea due to----->decreased discharge rate of vestibular afferents (If the water is cold, relative to body temperature (30 °C or below), the endolymph falls within the semicircular canal, decreasing the rate of vestibular afferent firing.)**
- ❖ **MEDICINE & ALT JEDJuly 7", 2020 - Night shift----->**
- ❖ **congo red stain is use for----->Multiple myeloma**
- ❖ **Embryonic tissue responsible forseparating chamber of heart aorta ----->Endocardial cushions**
- ❖ **receptor is involved in vascular smooth muscle contraction after IV epinephrine----->Alpha 1 adrenergic**
- ❖ **Most important clinical feature of water intoxication----->Slow pulse**
- ❖ **A diabetic patient with think mart jelly like sputum----->Klebsella**
- ❖ **RH -ve mother delivered baby with blood group O negative, now transfused RH +ive blood ----->Haemolytic reaction**
- ❖ **First step in thrombosis formation----->Deposition of platelet on endothelium**
- ❖ **Patient has difficulty in going down stairs he is turning his head to left to avoid diplopia which paralyzed ----->Right SO**
- ❖ **Aspirin inhibits platelet aggregation by decrease production of----->TXA2**
- ❖ **Characteristics feature of tubercle is----->Epithelioid cells**
- ❖ **Juxtamedullary nephron has----->Counter current multiplier**



- ✓ Now you can join us Online for MD/MS & Fcps Preparation
- ✓ Complete course in 2months including Past paper discussion
- ✓ Join from anywhere using mobile/laptop using internet
- ✓ 100% feasible with job and 100% time adjustment for students
- ✓ www.fcpsworld.com or Contact: 03129684658
- ✓ Hostel Facility is also available (for those who want to join physical classes)



- ❖ **presence of increase light chain immunoglobulin is feature of----->Systemic type amyloidosis**
- ❖ **nose infection spread to brain by----->Superior ophthalmic vein**
- ❖ **Longest receptive field sensation is carried by tract----->lateral spinothalamic**
- ❖ **hypersensitivity in diphtheria----->Type 3**
- ❖ **Main feature of dysplasia----->Change in shape and inc polarity of cell**
- ❖ **Histopathological feature of malignancy----->Invasion of BM**
- ❖ **Otic ganglion receive parasympathetic preganglionic fibers from----->**
- ❖ **2nd part of duodenum is supplied by----->Superior mesenteric artery (The superior mesenteric artery is the artery to the midgut. It supplies the gut from the ampulla of Vater of the 2nd part of the duodenum to the distal third of the transverse colon**
- ❖ **Nature of drug receptor present on cell membrane is----->Protein**
- ❖ **Lesion of VPM nucleus causes----->Obesity**
- ❖ **Benedict test is for----->urine (reducing test)**
- ❖ **Longest pre erythrocyte phase of plasmodium----->Malarae**
- ❖ **In Sibbi, 3 month history of fever, bilateral lymphadenopathy,hepatosplenomegaly, . He has history of bite by some fly. The diagnosis is----->Kalazar**
- ❖ **Individual muscle fibers are enclosed by----->Endomysium**
- ❖ **Pregnant patient taking amitriptyline which advice should be given----->Reduce dose if side effects**
- ❖ **Heart muscle acts as syntitium due to----->Gap junction**



- ✓ Now you can join us Online for MD/MS & Fcps Preparation
- ✓ Complete course in 2months including Past paper discussion
- ✓ Join from anywhere using mobile/laptop using internet
- ✓ 100% feasible with job and 100% time adjustment for students
- ✓ www.fcpsworld.com or Contact: 03129684658
- ✓ Hostel Facility is also available (for those who want to join physical classes)



- ❖ **Most likely ECG change in MI is----->St segment disruption**
- ❖ **During Asthma which of the following will increase ----->Histamine**
- ❖ **heavy intermenstrual bleeding treated by----->Danazol**
- ❖ **Crescent in kidney is formed by----->Parietal cells & macrophages**
- ❖ **hormone will decrease with increase in dopamine----->Prolactin**
- ❖ **First pass metabolism avoided by----->I/V**
- ❖ **carrier of haemoglobin----->Heptoglobin (Haptoglobin is a protein produced by the liver that the body uses to clear free hemoglobin (found outside of red blood cells) from circulation. This test measures the amount of haptoglobin in the blood. Hemoglobin is the iron-containing protein complex that transports oxygen throughout the body)**
- ❖ **In cardiac muscle plateau is due----->Influx of ca and efflux of K+**
- ❖ **Selective COX 2 inhibitor----->Meloxicam**
- ❖ **aeroplane engineer complain of abnormal hearing. cause----->High frequency sound**
- ❖ **True about posterior triangle of neck---->Hyaline cartilage covers articular**
- ❖ **The netve roots blocked in puudendal nerve block is----->S2, 3, 4**
- ❖ **In type 2 heart block----->Ventricular rate slower than atria**
- ❖ **Concomitant hyperplasia hypertrophy is present in----->Uterus in pregnancy**
- ❖ **DOC for travellers Diarrhoea ----->Norfloxacin**
- ❖ **right upper homonymous quadrantanopia, area damaged is----->left lower optic radiation**
- ❖ **prominent and rapid pre-potential is found in----->SA node**



- ✓ Now you can join us Online for MD/MS & Fcps Preparation
- ✓ Complete course in 2months including Past paper discussion
- ✓ Join from anywhere using mobile/laptop using internet
- ✓ 100% feasible with job and 100% time adjustment for students
- ✓ www.fcpsworld.com or Contact: 03129684658
- ✓ Hostel Facility is also available (for those who want to join physical classes)



- ❖ Renal pyramids are present in----->Medulla
- ❖ Drug of choice in pulmonary anthrax is----->Ciprofloxacin
- ❖ Removal of carbohydrate bound to protein results in----->Aggregation and precipitation
- ❖ Grading determines----->Degree of differentiation
- ❖ short stature, neck webbing, sexual infantilism, and a shield like chest with widely spaced nipple genetic change is----->45, XO
- ❖ Post rotatory nystagmus is due to----->Endoymph moves hair cells and Crista
- ❖ hx of meningitis. CSF show holo on microscope. Doc is----->Amphotricin B (cryptococcus)
- ❖ Facial nerve cross side oftemporal bone----->Posterior cruciate ligament
- ❖ Posterior dislocation of tibia over femur is prevented by----->Posterior cruciate ligament
- ❖ AIDS has low (followup)----->CD4
- ❖ Shigella cause dysentery by----->Mucosal invasion
- ❖ Montoux test induration is due to----->T Cells
- ❖ Blood supply to upper part of oesophagus----->Inferior thyroid artery
- ❖ Dialysis fluid has----->More glucose than plasma
- ❖ Outline of cell preserved in type of necrosis----->Caogularive
- ❖ Mutation of p53 is associated with----->Cell survival



- ✓ Now you can join us Online for MD/MS & Fcps Preparation
- ✓ Complete course in 2months including Past paper discussion
- ✓ Join from anywhere using mobile/laptop using internet
- ✓ 100% feasible with job and 100% time adjustment for students
- ✓ www.fcpsworld.com or Contact: 03129684658
- ✓ Hostel Facility is also available (for those who want to join physical classes)

Www.Fcpsworld.com (Institute for Fcps & Md/Ms)

GOLD STANDRD OF MD/MS & FCPSBuy All past papers GoldStandard FCPS order at: 03100220370

www.facebook.com/FcpsWorld

www.facebook.com/GynaeObsWorld

www.facebook.com/Ophtworld



Whatsapp 03129684658 to join whatsapp group of your specialty



- ✓ Now you can join us Online for MD/MS & Fcps Preparation
- ✓ Complete course in 2months including Past paper discussion
- ✓ Join from anywhere using mobile/laptop using internet
- ✓ 100% feasible with job and 100% time adjustment for students
- ✓ www.fcpsworld.com or Contact: 03129684658
- ✓ Hostel Facility is also available (for those who want to join physical classes)



GoldStandard **FCPS**

✓ Feb 2020 papers (recent updated)

✓ Authentic most repeated papers.

✓ MCQs with explanation and reference.

✓ 1 liner for rapid revision.
(Cram them)

✓ Mcqs with explanation and Ref.

✓ Clear FCPS-1 in 1st Attempt (Dont miss chance)

✓ Free Cash on Delivery**Order at 03100220370**



- ✓ Now you can join us Online for MD/MS & Fcps Preparation
- ✓ Complete course in 2months including Past paper discussion
- ✓ Join from anywhere using mobile/laptop using internet
- ✓ 100% feasible with job and 100% time adjustment for students
- ✓ www.fcpsworld.com or Contact: 03129684658
- ✓ Hostel Facility is also available (for those who want to join physical classes)



www.FCPSWORLD.com

GoldStandard FCPS:

Medicine & Allied

8th July 2020 Morning

- ✓ Clear FCPS-1 in **FIRST ATTEMPT**
- ✓ Entire course will be completed in 2 months.
- ✓ Live lectures via video Portal
- ✓ Daily Test session (Test discussion will be on Via Portal)
- ✓ Follow our complete guideline for FCPS-1
- ✓ Get Hands on 20,000 CPSP question (most of them repeat)
- ✓ Free study material, whatsapp group (only for our students)
- ✓ Don't Miss the chance. **(LIMITED SEATS AVAILABLE.)**
- ✓ WWW.FCPSWORLD.com
- ✓ WWW.facebook.com/fcpsworld
- ✓ For Details Phone# 03129684658



- ✓ Now you can join us Online for MD/MS & Fcps Preparation
- ✓ Complete course in 2months including Past paper discussion
- ✓ Join from anywhere using mobile/laptop using internet
- ✓ 100% feasible with job and 100% time adjustment for students
- ✓ www.fcpsworld.com or Contact: 03129684658
- ✓ Hostel Facility is also available (for those who want to join physical classes)



(Errors and omissions excepted)

Cram Statements

- ❖ **Cerebellum is connected to midbrain via----->Superior cerebellar peduncle**
- ❖ **Antidote for warfarin----->Vitamin k.**
- ❖ **Major contributor of urea in body----->Ammonia**
- ❖ **True hermaphrodite is----->XX**
- ❖ **Gene amplification tumor involve----->Neuroblastoma**
- ❖ **anterior wall MI show----->lead VI-V4 and St elevation**
- ❖ **aminoacid that transport of nitrogen destined for excretion as urea----->Glutamine**
- ❖ **Mid of 3rd week characteristic in formation of----->Heart tube**
- ❖ **A farmer has lung lesion----->Aspergillosis**
- ❖ **Axillary sheath formed by;----->Prevertebral fascia**
- ❖ **Female patient was operated for benign ovarian tumor her wound is not healing proper lyshe was asked about diet it was lacking fruits and vegetables what is the cause of decrease wound healing----->vit.C Deficiency >dec. tensil artery**
- ❖ **Druring lactation prolactin causes inhibition of----->GnrH**
- ❖ **Doc for pseudomonas aueroginosa----->Ceftazidime**



- ✓ Now you can join us Online for MD/MS & Fcps Preparation
- ✓ Complete course in 2months including Past paper discussion
- ✓ Join from anywhere using mobile/laptop using internet
- ✓ 100% feasible with job and 100% time adjustment for students
- ✓ www.fcpsworld.com or Contact: 03129684658
- ✓ Hostel Facility is also available (for those who want to join physical classes)



- ❖ Soldier after retiring from Siachen glacier with complains of headache and peripheral cyanosis of his fingers. cause is----->Secondary Polycythaemia
- ❖ Blood supply of bone----->Epiphysis supply epiphyseal artery
- ❖ The cause of primary hepatic carcinoma----->Aflatoxin
- ❖ present in anterior mediastinum----->Thymus
- ❖ GFR is estimated by----->Creatinine
- ❖ Nucleus tractus solitem forms----->2nd order neuron
- ❖ A person drank 170meQ/L Na⁺ in 100ml water effect will be----->Increased ECF + ICF osmolarity
- ❖ Primary amyloidosis of increase immunoglobulin light chain is----->Systemic type amyloidosis
- ❖ Right to left shift occur in----->CO poisoning
- ❖ in Abdominal angina which area is lease effected----->Descending colon
- ❖ Hepatitis B monitoring is by----->SGPT
- ❖ Micturition reflex is controlled by-----> Sacral
- ❖ lymphadenopathy with palpable lymph nodes in cervical region. diagnosis----->AIDS
- ❖ Rapidly adapting receptor----->Touch
- ❖ Umbilical vein has----->Increased O2 saturation



- ✓ Now you can join us Online for MD/MS & Fcps Preparation
- ✓ Complete course in 2months including Past paper discussion
- ✓ Join from anywhere using mobile/laptop using internet
- ✓ 100% feasible with job and 100% time adjustment for students
- ✓ www.fcpsworld.com or Contact: 03129684658
- ✓ Hostel Facility is also available (for those who want to join physical classes)



- ❖ **Pleurocentesis location**----->lower border of 9th Intercostal space mid axillary line (The recommended location varies depending upon the source. Some sources recommend the midaxillary line in the eighth ninth or tenth intercostal space. Whenever possible the procedure should be performed under ultrasound guidance which has shown to reduce complications. wikipedia)
- ❖ **Endocrine system develops from**----->3rd and 4th pharyngeal pouch
- ❖ **Negative water clearance**----->Siadh
- ❖ **drug for patient with subarachnoid haemorrhage is**----->Nimodipine
- ❖ **Ureter damaged at pelvic brim during ligating** ----->Uterine artery
- ❖ **Maximum percentage of carbon dioxide in the blood is found as**----->Bicarbonate
- ❖ **horizontal diplopia on far right lateral gaze nerve damaged is**----->Abducent nerve
- ❖ **In severe diarrhea what occurs**----->Metabolic acidosis
- ❖ **Digoxin toxicity increased with**----->Hypokalemia
- ❖ **history of prolong bleeding during circumcision. Has tender joints**----->Factor 8 assay
- ❖ **Tumor marker for colorectal CA**----->CEA
- ❖ **Adult polycystic kidney disease is**----->Autosomal dominant



- ✓ Now you can join us Online for MD/MS & Fcps Preparation
- ✓ Complete course in 2months including Past paper discussion
- ✓ Join from anywhere using mobile/laptop using internet
- ✓ 100% feasible with job and 100% time adjustment for students
- ✓ www.fcpsworld.com or Contact: 03129684658
- ✓ Hostel Facility is also available (for those who want to join physical classes)



- ❖ Type of necrosis in stroke brain-----> liquefactive
- ❖ High cardiac output failure is found in----->beri beri
- ❖ Defecation occurs by----->Relaxation of sphincter
- ❖ spore forming bacteria----->Clostridium
- ❖ Drug worsening angina is----->vasopression
- ❖ Thirst stimulated by----->Angiotensin 2
- ❖ sympathetic activity cause----->Bronchodilation
- ❖ drug excrete without anybiotransformation is----->Streptomycin
- ❖ digging deep earth crust prone to have ----->Silicosis
- ❖ Trisomy 21 is----->Down syndrome
- ❖ Sympathetic activity of heart causes----->Decrease AV nodal delay
- ❖ Lesion of lateral hypothalamus results in----->Inhibition of feeding
- ❖ Cause of lymph granuloma vanereum----->Chlamydia Trachomatis LI -L3
- ❖ Postganglionic sympathetic ----->nor epinephrine
- ❖ Starvation shows----->Ketone in blood
- ❖ IV-fluid should be given to increase ECF & decrease ICF-----> Pure water
- ❖ Body of hyoid is at which cervical vertebral level----->C3
- ❖ Right intercostobrachial artery arises from----->Anterior portion of descending aorta
- ❖ Oxygen diffusion in lung capillaries is by ----->Passive diffusion



- ✓ Now you can join us Online for MD/MS & Fcps Preparation
- ✓ Complete course in 2months including Past paper discussion
- ✓ Join from anywhere using mobile/laptop using internet
- ✓ 100% feasible with job and 100% time adjustment for students
- ✓ www.fcpsworld.com or Contact: 03129684658
- ✓ Hostel Facility is also available (for those who want to join physical classes)



- ❖ Patient develops infective endocard after dental procedure organism----->Strept. Viridans
- ❖ Lymph from appendix is drain into ----->Superior mesenteric LN
- ❖ pt with pH 7.4 bicarbonate 18 and PCO2 30.----->Compensated Metabolic acidosis
- ❖ Mean stroke volume is----->cardiac output/heart rate
- ❖ Feathery appearance in abdomen on barium swallow is in----->Jejunum
- ❖ Myasthenia gravis type of hypersensitivity----->Type 2
- ❖ maxillary artery supplies which arch----->1st
- ❖ Down syndrome associated with----->Alzheimer disease
- ❖ Extensor at hip and flexor at knee----->Semitendinosus
- ❖ Corpus luteum produces----->progesterone estrogen inhibit
- ❖ do not provide active immunity----->Antitoxin
- ❖ Blood supply of thalamus----->Posterior cerebral artery
- ❖ Common side effect of Protamine is----->Hypotension
- ❖ Benzodiazepines will cause severe hypotension in-----> Above 65 years
- ❖ Daily requirement of protein----->10-35%
- ❖ girl with type 1 diabetes has mostly hyperglycemia in morning. Which is appropriate option ----->Regular & intermediate insulin twice
- ❖ Motor aphasia due to----->Broca area



- ✓ Now you can join us Online for MD/MS & Fcps Preparation
- ✓ Complete course in 2months including Past paper discussion
- ✓ Join from anywhere using mobile/laptop using internet
- ✓ 100% feasible with job and 100% time adjustment for students
- ✓ www.fcpsworld.com or Contact: 03129684658
- ✓ Hostel Facility is also available (for those who want to join physical classes)



- ❖ Facial nerve passes to temporal through----->facial canal
- ❖ Blood group with no agglutinins----->AB -ive
- ❖ common in pulmonary and skeletal capillaries----->Protein filtration
- ❖ Lymph drainage of lateral quadrant of breat----->Ant. axillary nodes
- ❖ Psuedostratified epithelium is present in----->Vas Deference
- ❖ Branch of subclavian artery supplying to the shoulder joint----->Dorsal scapular
- ❖ Adherence and compliance of treatment-----> Patient perception of disease
- ❖ Ischemic patient took 6 hours to reach hospital which organ will least effected----->Skeletal muscle
- ❖ Aspirin overdose causes----->tinnits (first sign) Acidosis
- ❖ Broaca area damage in non-dominant hemisphere aphasia----->Anomic
- ❖ Parasympathetic effect on heart----->Decrease PR interval
- ❖ Close to crus cerebri is----->Substania nigra
- ❖ doc of pseudomembranous colitis-----> Vancomycin
- ❖ DOC in menigitist-----> Ceftriaxone
- ❖ Benzodiazepines causes ----->hypotention
- ❖ The H-K pump in parietal cells iscontolled by----->K-ATPase



- ✓ Now you can join us Online for MD/MS & Fcps Preparation
- ✓ Complete course in 2months including Past paper discussion
- ✓ Join from anywhere using mobile/laptop using internet
- ✓ 100% feasible with job and 100% time adjustment for students
- ✓ www.fcpsworld.com or Contact: 03129684658
- ✓ Hostel Facility is also available (for those who want to join physical classes)



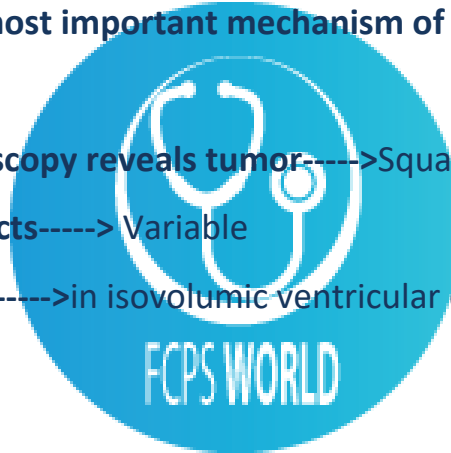
- ❖ The extra systolic beat would produce----->Decrease pulse pressure because SV is decreased
- ❖ Which one is part of limbic system----->Amygdala
- ❖ Pancreatic secretion is increased by----->Secretin
- ❖ no improvement with H2 blocker. Cause is----->Zollinger Ellison syndrome
- ❖ factor helpful in absorption the most----->lipid Solubility
- ❖ increase in pressure in heart cause release of ----->ANP
- ❖ Hormone that always act via CAM mechanism----->TSH
- ❖ The veins opening directly opens into right atrium is----->Anterior cardiac vein
- ❖ Major cells in pathogenesis insarcoidosis are----->Lymphocytes
- ❖ Drug which can be given in preoperatively in patient----->lorazepam
- ❖ Spinal nerve----->both sensory and motor in dorsal rami
- ❖ Carbohydrate packing occurs in which organelle----->Golgi complex
- ❖ hx of nail infection and multiple endocrine dysfunctio organism most probably involves is----->Candida Albicans
- ❖ hormone increases salivation----->ACH
- ❖ PTH is normal in-----> Osteopenia
- ❖ Diphtheria antitoxin ----->type 3 hypersensitivity
- ❖ Selective Cox 2 inhibitors are----->Celecoxib



- ✓ Now you can join us Online for MD/MS & Fcps Preparation
- ✓ Complete course in 2months including Past paper discussion
- ✓ Join from anywhere using mobile/laptop using internet
- ✓ 100% feasible with job and 100% time adjustment for students
- ✓ www.fcpsworld.com or Contact: 03129684658
- ✓ Hostel Facility is also available (for those who want to join physical classes)



- ❖ Primary oocyte completes their 1st meiotic division----->Before ovulation
- ❖ Epicardium supplied by----->coronary arteries
- ❖ Greatest chance of pneumothorax while inserting CVP----->right subclain vein
- ❖ patient taking phenothiazine noticd slowing movement when removing fly from the nose . What is the cause ----->parkinsonism (intention tremors)
- ❖ Just After injury most important mechanism of hemostas is----->Vasoconstriction
- ❖ haematuria cystoscopy reveals tumor----->Squamous
- ❖ Adverse drug effects-----> Variable
- ❖ 1st heart sound is----->in isovolumic ventricular contraction



Whatsapp 03129684658 to join whatsapp group of your specialty



- ✓ Now you can join us Online for MD/MS & Fcps Preparation
- ✓ Complete course in 2months including Past paper discussion
- ✓ Join from anywhere using mobile/laptop using internet
- ✓ 100% feasible with job and 100% time adjustment for students
- ✓ www.fcpsworld.com or Contact: 03129684658
- ✓ Hostel Facility is also available (for those who want to join physical classes)

Www.Fcpsworld.com (Institute for Fcps & Md/Ms)

GOLD STANDRD OF MD/MS & FCPSBuy All past papers GoldStandard FCPS order at: 03100220370

www.facebook.com/FcpsWorld

www.facebook.com/GynaeObsWorld

www.facebook.com/Ophtworld



FCPS-1 ONLINE COURSE

Join FcpsWorld Online preparation courses and clear exam in 1st Attempt.

WWW.FCPSWORLD.COM



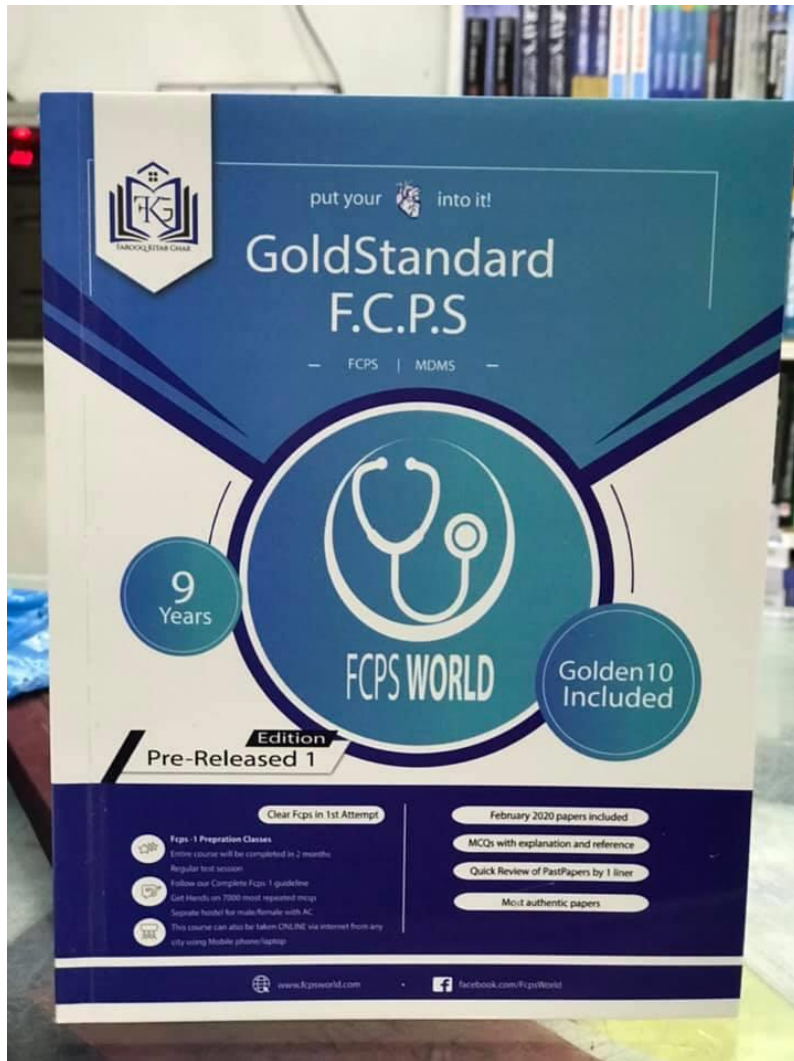
Fcpsworld



www.fcpsworld.com



- ✓ Now you can join us Online for MD/MS & Fcps Preparation
- ✓ Complete course in 2months including Past paper discussion
- ✓ Join from anywhere using mobile/laptop using internet
- ✓ 100% feasible with job and 100% time adjustment for students
- ✓ www.fcpsworld.com or Contact: 03129684658
- ✓ Hostel Facility is also available (for those who want to join physical classes)



GoldStandard **FCPS**

✓ Feb 2020 papers (recent updated)

✓ Authentic most repeated papers.

✓ MCQs with explanation and reference.

✓ 1 liner for rapid revision.
(Cram them)

✓ Mcqs with explanation and Ref.

✓ Clear FCPS-1 in 1st Attempt (Dont miss chance)

✓ **Free Cash on DeliveryOrder at 03100220370**



- ✓ Now you can join us Online for MD/MS & Fcps Preparation
- ✓ Complete course in 2months including Past paper discussion
- ✓ Join from anywhere using mobile/laptop using internet
- ✓ 100% feasible with job and 100% time adjustment for students
- ✓ www.fcpsworld.com or Contact: 03129684658
- ✓ Hostel Facility is also available (for those who want to join physical classes)